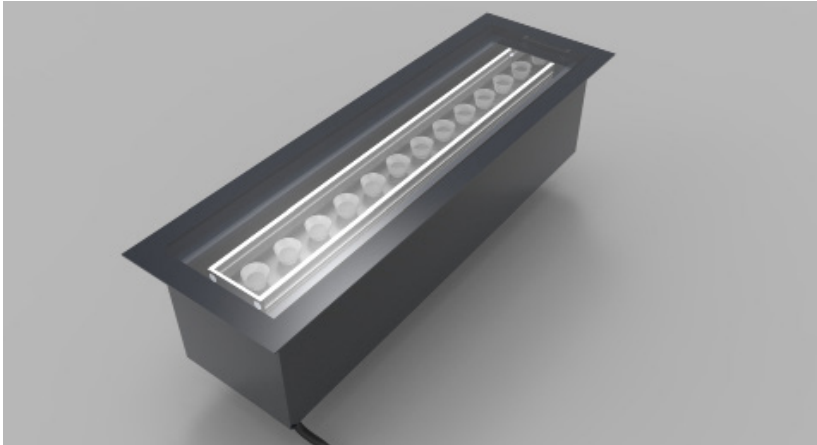


# Product Details: LinLED-SHO-OPTIC-BAFFLE-FLOOR



## Specification

	350ma	500ma
Length	200mm + 97mm increments	200mm + 97mm increments
Colour	2.25K/2.7K/3.0K/3.5K/4.0K/4.5K/5.3K/6.0K	2.25K/2.7K/3.0K/3.5K/4.0K/4.5K/5.3K/6.0K
Input Current	350ma	500ma
Power Consumption	44 W/m	63 W/m
Luminaire Efficiency	108 lm/W	105 lm/W
IP Rating	IP20	IP20
Optic	15°/20°/45°/ 34°x13°	15°/20°/45°/ 34°x13°
Clip	Rear or End Bracket	Rear or End Bracket

### Order code

LinLED SHO OPTIC BAFFLE FLOOR-LENGTH-CURRENT-COLOUR-IP-OPTIC-CLIP  
e.g. LED SHO OPTIC BAFFLE FLOOR-XXmm-300ma-2.25K-IP20-16-REAR

LENGTH	CURRENT	COLOUR	IP	OPTIC	CLIP
XXmm	300ma	2.25K	IP20	16	REAR
	500ma	2.7K		23	END
		3.0K		46	
		3.5K		48x19	
		4.0K			
		4.5K			
		5.3K			
		6.0K			

### Drivers

non-dimmable power supplies:

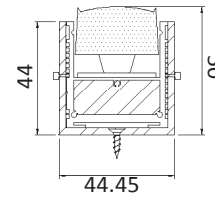
1-10V /DALI/DMX dimmable power supplies to be ordered separately

Please call our sales team who will make sure specification suits application

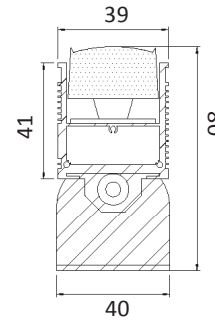
Linear LED Lighting by The Light Lab



## X-Sections

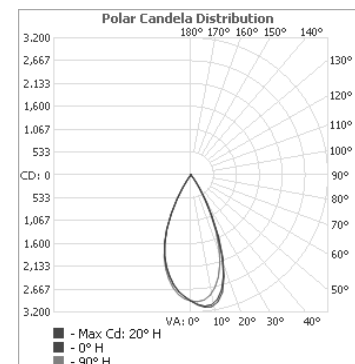
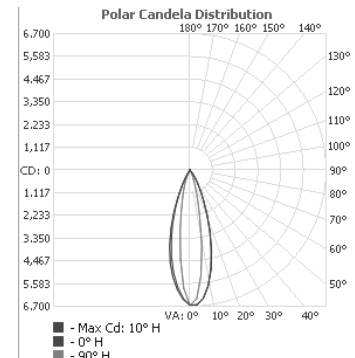


FIXED FITTING



ROTARY FITTING

## Photometric Info



The Light Lab  
22 Holywell Row  
London EC2A 4JB  
United Kingdom  
+44 (0) 207 278 2678  
@thelightlabtd  
www.thelightlab.com