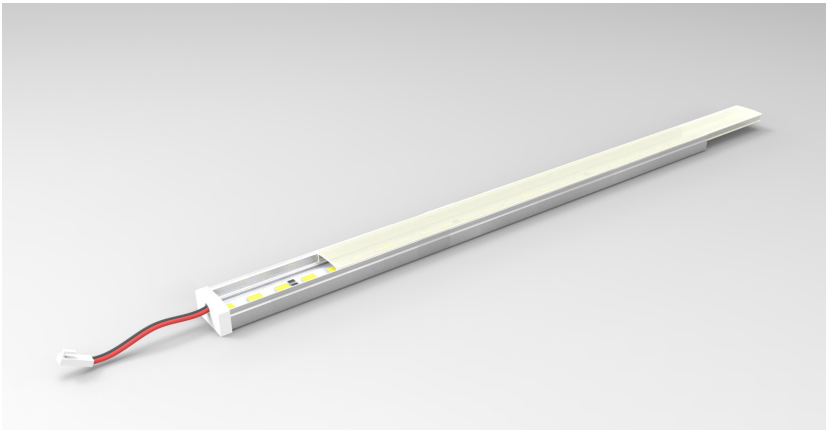


Product Details: LinLED-PROFILE-MINI



Specification

| | |
|----------------------|--|
| | SO |
| Length | Min 55mm up to 1955mm in 50mm increments |
| Colour | 3.0K/4.0K/5.0K |
| Input Voltage | 24Vdc |
| Power Consumption | 9.6 W/m |
| Luminaire Efficiency | 80 lm/W |
| IP Rating | IP44 |
| Diffuser | Clear/Frost/Opal |
| Fixing | VHB Tape or Dual Lock |

Order code
LinLED PROFILE MINI-LENGTH-OUTPUT-COLOUR-IP-DIFFUSER-CLIP
e.g. LED PROFILE MINI-XXmm-SO-3.0K-IP44-CLEAR-VHB

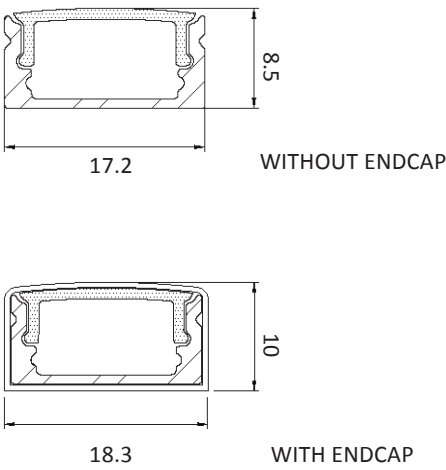
| LENGTH | - | OUTPUT | - | COLOUR | - | IP | - | DIFFUSER | - | FIXING |
|--------|---|--------|---|--------|---|------|---|----------|---|--------|
| XXmm | | SO | | 3.0K | | IP44 | | CLEAR | | VHB |
| | | | | 4.0K | | | | FROST | | DL |
| | | | | 5.0K | | | | OPAL | | |

Drivers
non-dimmable power supplies:
1-10V /DALI/DMX dimmable power supplies to be ordered seperately

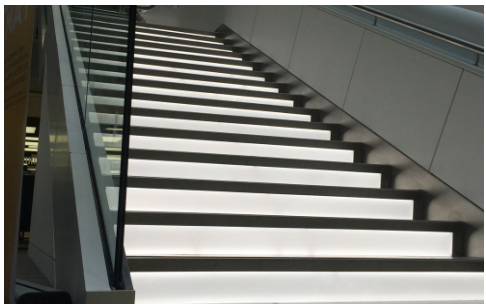
Please call our sales team who will make sure specification suits application
Linear LED Lighting by The Light Lab



X-Sections



Project Example



The Light Lab
22 Holywell Row
London EC2A 4JB
United Kingdom
+44 (0) 207 278 2678
@thelightlabltd
www.thelightlab.com