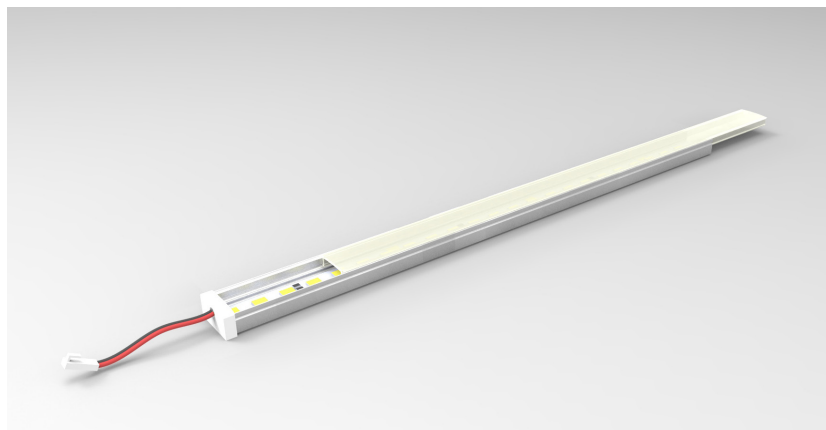


# Product Details: LinLED-PROFILE-MINI



## Specification

	SO
Length	Min 55mm up to 1955mm in 50mm increments
Colour	3.0K/4.0K/5.0K
Input Voltage	24Vdc
Power Consumption	9.6 W/m
Luminaire Efficiency	80 lm/W
IP Rating	IP44
Diffuser	Clear/Frost/Opal
Fixing	VHB Tape or Dual Lock

### Order code

LinLED PROFILE MINI-LENGTH-OUTPUT-COLOUR-IP-DIFFUSER-CLIP  
 e.g. LED PROFILE MINI-XXmm-SO-3.0K-IP44-CLEAR-VHB

LENGTH	-	OUTPUT	-	COLOUR	-	IP	-	DIFFUSER	-	FIXING
XXmm		SO		3.0K		IP44		CLEAR		VHB
				4.0K				FROST		DL
				5.0K				OPAL		

### Drivers

non-dimmable power supplies:

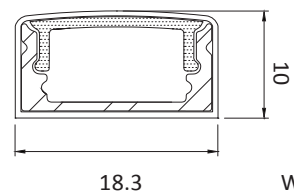
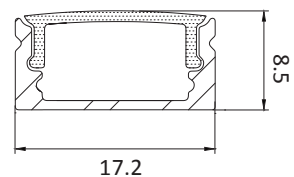
1-10V /DALI/DMX dimmable power supplies to be ordered separately

Please call our sales team who will make sure specification suits application

Linear LED Lighting by The Light Lab

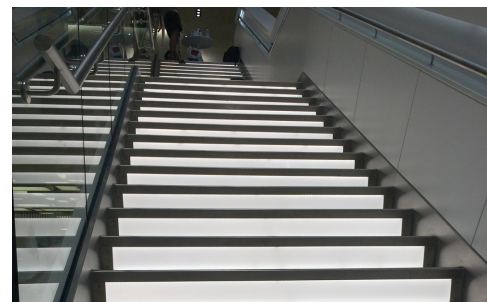


## X-Sections



WITH ENDCAP

## Project Example



The Light Lab  
 22 Holywell Row  
 London EC2A 4JB  
 United Kingdom  
 +44 (0) 207 278 2678  
 @thelightlabtd  
 www.thelightlab.com