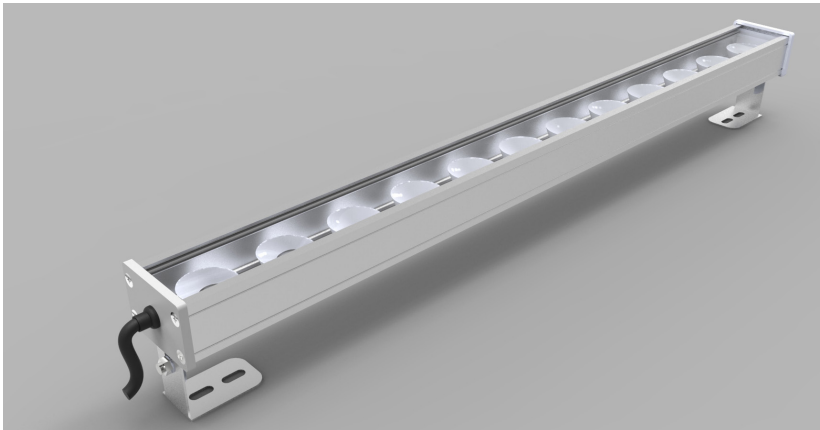


Product Details: LinLED-HO-OPTIC-TRI-CHANNEL



Specification

Length	495mm up to 1755mm in 420mm increments
Colour	White Mix or RGB
Input Voltage	24Vdc
Power Consumption	32 W/m
Luminaire Efficiency	83 lm/W for white mix
IP Rating	IP40 or IP65
Optic	7°/14°/26°/40°/9° x48°
Diffuser	Clear or Frosted

Order code

LinLED HO OPTIC TRI CHANNEL-LENGTH-COLOUR-IP-OPTIC-DIFFUSER
 e.g. LED HO OPTIC TRI CHANNEL-XXmm-RGB-IP40-7-CLEAR

LENGTH	COLOUR	IP	OPTIC	DIFFUSER
XXmm	WM	IP40	7	CLEAR
	RGB	IP65	14	FROSTED
			26	
			40	
			9X48	

Drivers

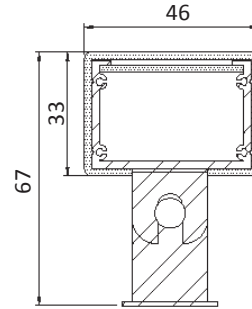
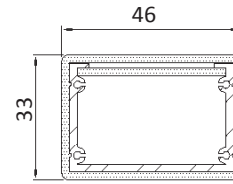
non-dimmable power supplies:
 1-10V /DALI/DMX dimmable power supplies to be ordered seperately

Please call our sales team who will make sure specification suits application

Linear LED Lighting by The Light Lab



X-Sections



ROTARY FIXING

Project Example



The Light Lab
 22 Holywell Row
 London EC2A 4JB
 United Kingdom
 +44 (0) 207 278 2678
 @thelightlabtd
 www.thelightlab.com