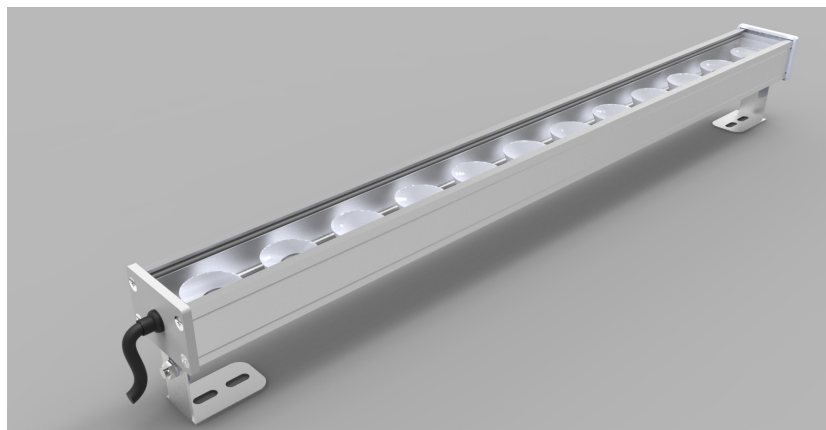


## Product Details: LinLED-HO-OPTIC-TRI-CHANNEL



### Specification

Length	495mm up to 1755mm in 420mm increments
Colour	White Mix or RGB
Input Voltage	24Vdc
Power Consumption	32 W/m
Luminaire Efficiency	83 lm/W for white mix
IP Rating	IP40 or IP65
Optic	7°/14°/26°/40°/9° x48°
Diffuser	Clear or Frosted

#### Order code

LinLED HO OPTIC TRI CHANNEL-LENGTH-COLOUR-IP-OPTIC-DIFFUSER  
 e.g. LED HO OPTIC TRI CHANNEL-XXmm-RGB-IP40-7-CLEAR

LENGTH	COLOUR	IP	OPTIC	DIFFUSER
XXmm	WM	IP40	7	CLEAR
	RGB	IP65	14	FROSTED
			26	
			40	
			9X48	

#### Drivers

non-dimmable power supplies:

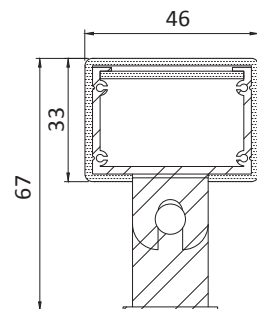
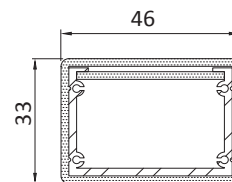
1-10V /DALI/DMX dimmable power supplies to be ordered separately

Please call our sales team who will make sure specification suits application

Linear LED Lighting by The Light Lab



### X-Sections



### Project Example



The Light Lab  
 22 Holywell Row  
 London EC2A 4JB  
 United Kingdom  
 +44 (0) 207 278 2678  
 @thelightlabtd  
 www.thelightlab.com