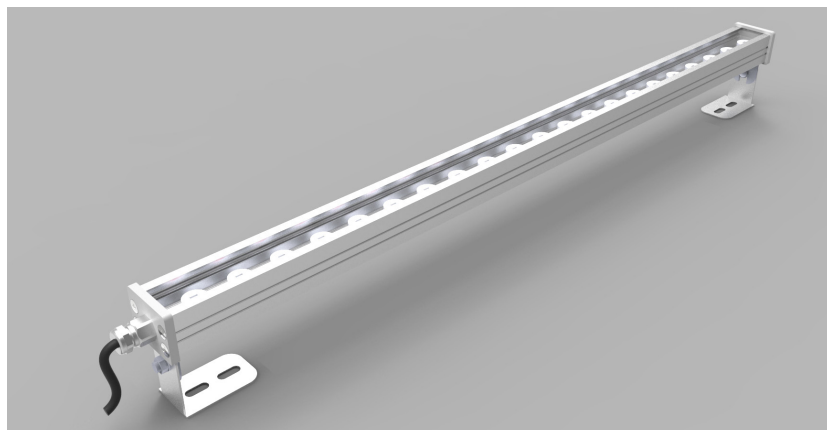


Product Details: LinLED-HO-OPTIC-MINI



Specification

Length	120m + 100m increments
Colour	2.7K/3.0K/4.0K/6.0K
Input Voltage	24Vdc
Power Consumption	20 W/m
Luminaire Efficiency	110 lm/W
IP Rating	IP40
Optic	16°/23°/46°/48°x19°
Clip	Clip or Adjustable Bracket
Diffuser	Clear or Frosted

Order code

LinLED HO OPTIC MINI-LENGTH-COLOUR-IP-OPTIC-CLIP-DIFFUSER
 e.g. LED HO OPTIC MINI-XXmm-2.7K-IP40-16-CLIP-CLEAR

LENGTH	COLOUR	IP	OPTIC	CLIP	DIFFUSER
XXmm	2.7K	IP40	16	CLIP	CLEAR
	3.0K		23	AB	FROSTED
	4.0K		46		
	6.0K		48X19		

Drivers

non-dimmable power supplies:

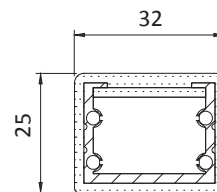
1-10V /DALI/DMX dimmable power supplies to be ordered separately

Please call our sales team who will make sure specification suits application

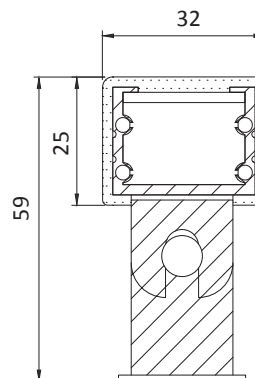
Linear LED Lighting by The Light Lab



X-Sections



WITHOUT BRACKET



WITH BRACKET

Project Example



The Light Lab
 22 Holywell Row
 London EC2A 4JB
 United Kingdom
 +44 (0) 207 278 2678
 @thelightlabtd
 www.thelightlab.com