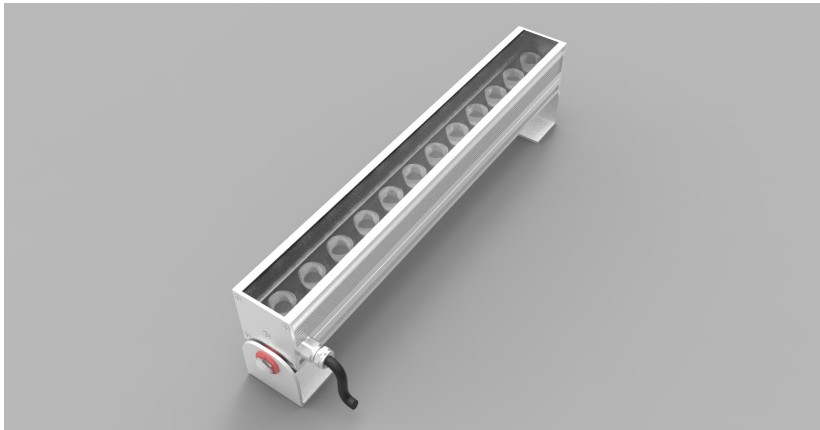


Product Details: LinLED-HO-OPTIC-SINGLE-CHANNEL



Specification

	350ma	700ma
Length	190mm + 167mm increments	200mm + 97mm increments
Colour	2.25K/2.7K/3.0K/3.5K/4.0K/4.5K/5.3K/6.0K	2.25K/2.7K/3.0K/3.5K/4.0K/4.5K/5.3K/6.0K
Input Current	350ma	700ma
Power Consumption	25 W/m	50 W/m
Luminaire Efficiency	108 lm/W	97 lm/W
IP Rating	IP20	IP20
Optic	11°/26°/39°/ 46° x12°	11°/26°/39°/ 46° x12°
Clip	Rear or End Bracket	Rear or End Bracket

Order code

LinLED HO OPTIC SINGLE CHANNEL-LENGTH-CURRENT-COLOUR-IP-OPTIC-CLIP
 e.g. LED HO OPTIC SINGLE CHANNEL-XXmm-350ma-2.25K-IP20-11-REAR

LENGTH - XXmm	CURRENT -	COLOUR -	IP -	OPTIC -	CLIP
	350ma	2.25K	IP20	11	REAR
	700ma	2.7K		26	END
		3.0K		39	
		3.5K		46x12	
		4.0K			
		4.5K			
		5.3K			
		6.0K			

Drivers

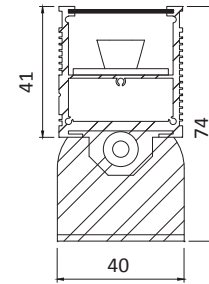
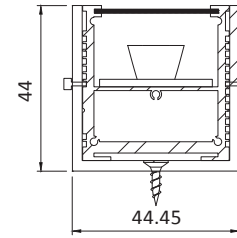
non-dimmable power supplies:

1-10V /DALI/DMX dimmable power supplies to be ordered seperately

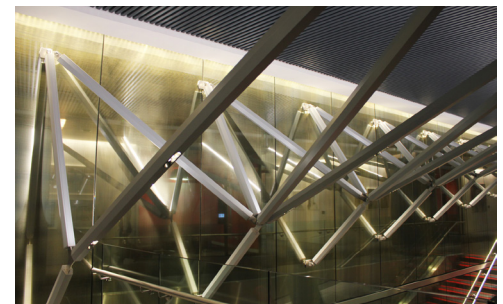
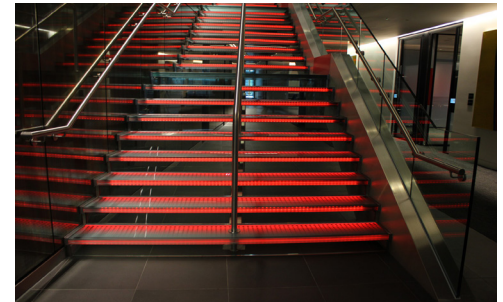
Please call our sales team who will make sure specification suits application

Linear LED Lighting by The Light Lab

X-Sections



Project Example



The Light Lab
 22 Holywell Row
 London EC2A 4JB
 United Kingdom
 +44 (0) 207 278 2678
 @thelightlabtd
 www.thelightlab.com