



LED Linear Lighting

spec sheet

Main Features

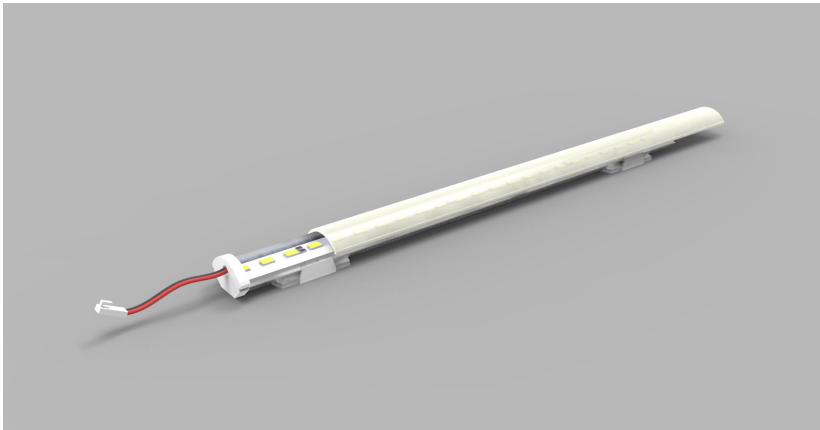
- Linear LEDs for every design application
- Various outputs from 750 lm/M to 6000 lm/M
- Bracket/clips design to suit continuous line of light
- Advanced optic design to maximise wall wash effect
- Low profile lights for precise joinery application
- 50 000 unit life expectancy
- 2 year warranty

Linear LED Lighting by The Light Lab



LinLED-PROFILE
LinLED-PROFILE-MINI
LinLED-PROFILE-SHELF
LinLED-PROFILE-IP65
LinLED-COVE
LinLED-HO-OPTIC
LinLED-SHO-OPTIC-BAFFLE
LinLED-HO-OPTIC-MINI
LinLED-HO-OPTIC-TRI-CHANNEL
LinLED-HO-OPTIC-RGBW
LinLED-SHO-OPTIC-BAFFLE-FLOOR

Product Details: LinLED-PROFILE



Specification

	SO	HO
Length	min 55mm up to 1955mm in 50mm increments	min 55mm up to 1955mm in 50mm increments
Colour	3.0K/4.0K/5.0K	2.7K/3.0K/3.5K/4.0K/5.0K
Input Voltage	24Vdc	24Vdc
Power Consumption	9.6 W/m	14 W/m
Luminaire Efficiency	80 lm/W	110 lm/W
IP Rating	IP44	IP44
Diffuser	Clear/Frost/Opal	Clear/Frost/Opal
Clip	Fixed 0°/30°/45°	Fixed 0°/30°/45°

Order code

LinLED PROFILE-LENGTH-OUTPUT-COLOUR-IP-DIFFUSER-CLIP
e.g. LED PROFILE-XX-SO-3.0K-IP44-CLEAR-0

LENGTH - OUTPUT - COLOUR - IP - DIFFUSER - CLIP
XXmm SO 2.7K IP44 CLEAR 0
HO 3.0K FROST 30
3.5K OPAL 45
4.0K
5.0K

Drivers

non-dimmable power supplies:

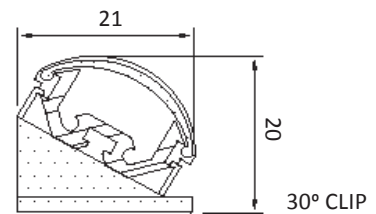
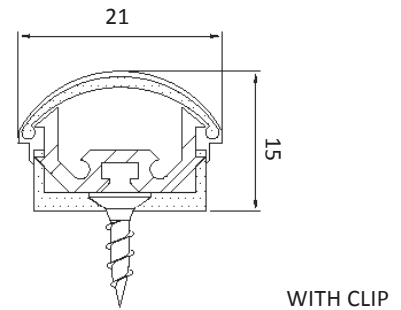
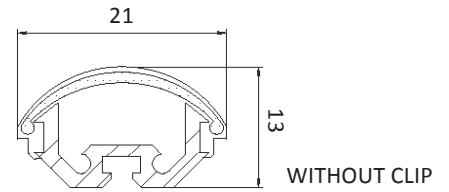
1-10V /DALI/DMX dimmable power supplies to be ordered seperately

Please call our sales team who will make sure specification suits application

Linear LED Lighting by The Light Lab



X-Sections

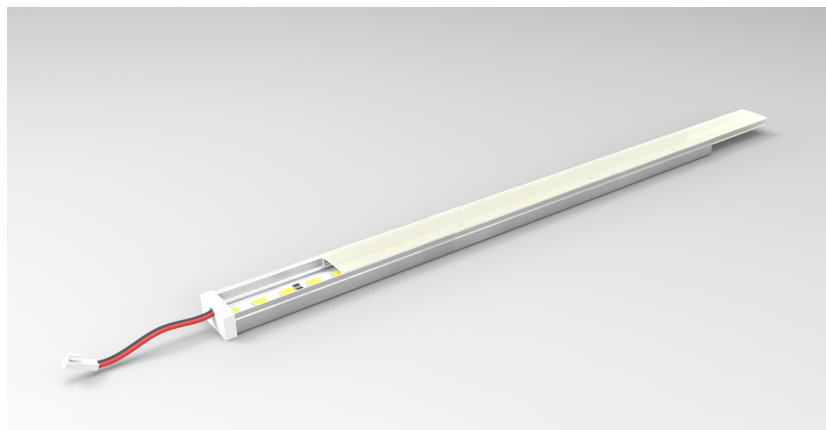


Project Example



The Light Lab
22 Holywell Row
London EC2A 4JB
United Kingdom
+44 (0) 207 278 2678
@thelightlabtd
www.thelightlab.com

Product Details: LinLED-PROFILE-MINI



Specification

	SO
Length	Min 55mm up to 1955mm in 50mm increments
Colour	3.0K/4.0K/5.0K
Input Voltage	24Vdc
Power Consumption	9.6 W/m
Luminaire Efficiency	80 lm/W
IP Rating	IP44
Diffuser	Clear/Frost/Opal
Fixing	VHB Tape or Dual Lock

Order code

LinLED PROFILE MINI-LENGTH-OUTPUT-COLOUR-IP-DIFFUSER-CLIP
 e.g. LED PROFILE MINI-XXmm-SO-3.0K-IP44-CLEAR-VHB

LENGTH	-	OUTPUT	-	COLOUR	-	IP	-	DIFFUSER	-	FIXING
XXmm		SO		3.0K		IP44		CLEAR		VHB
				4.0K				FROST		DL
				5.0K				OPAL		

Drivers

non-dimmable power supplies:

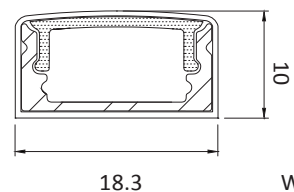
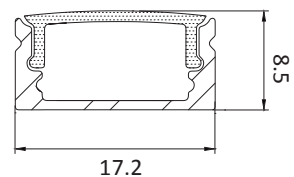
1-10V /DALI/DMX dimmable power supplies to be ordered seperately

Please call our sales team who will make sure specification suits application

Linear LED Lighting by The Light Lab

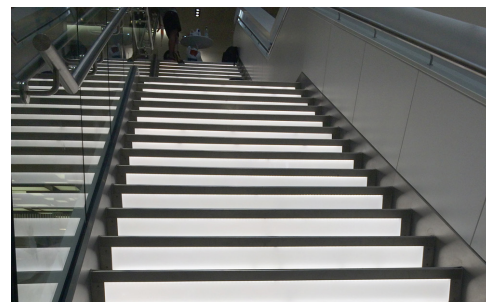


X-Sections



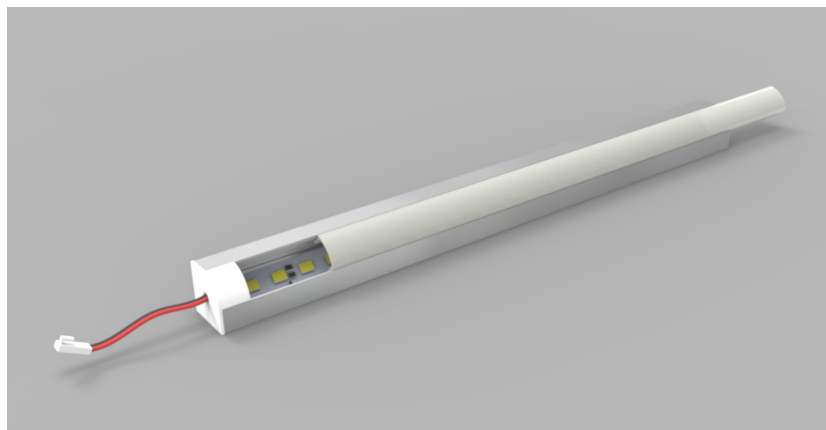
WITH ENDCAP

Project Example



The Light Lab
 22 Holywell Row
 London EC2A 4JB
 United Kingdom
 +44 (0) 207 278 2678
 @thelightlabtd
 www.thelightlab.com

Product Details: LinLED-PROFILE-SHELF



Specification

	SO	HO
Length	min 55mm up to 1955mm in 50mm increments	min 55mm up to 1955mm in 50mm increments
Colour	3.0K/4.0K/5.0K	2.7K/3.0K/3.5K/4.0K/5.0K
Input Voltage	24Vdc	24Vdc
Power	9.6 W/m	14 W/m
Consumption		
Luminaire Efficiency	80 lm/W	110 lm/W
IP Rating	IP44	IP44
Diffuser	Clear/Frost/Opal	Clear/Frost/Opal
Clip	Clip or VHB Dual Lock	Clip or VHB Dual Lock

Order code

LinLED PROFILE SHELF-LENGTH-OUTPUT-COLOUR-IP-DIFFUSER-CLIP
e.g. LED PROFILE-XXmm-SO-3.0K-IP44-CLEAR-CLIP

LENGTH -	OUTPUT -	COLOUR -	IP -	DIFFUSER -	CLIP
XXmm	SO	2.7K	IP44	CLEAR	CLIP
	HO	3.0K		FROST	VHB
		3.5K		OPAL	
		4.0K			
		5.0K			

Drivers

non-dimmable power supplies:

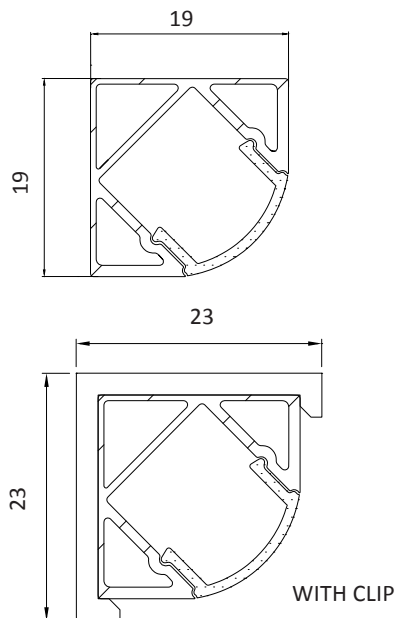
1-10V /DALI/DMX dimmable power supplies to be ordered separately

Please call our sales team who will make sure specification suits application

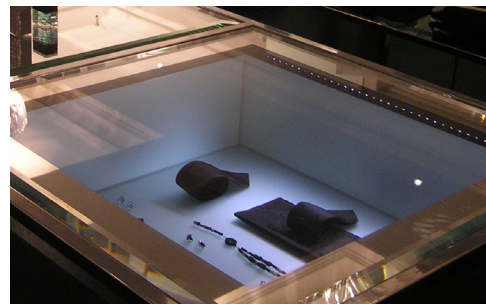
Linear LED Lighting by The Light Lab



X-Sections



Project Example



The Light Lab
22 Holywell Row
London EC2A 4JB
United Kingdom
+44 (0) 207 278 2678
@thelightlabtd
www.thelightlab.com

Product Details: LinLED-PROFILE-IP65



Specification

	HO	RGB
Length	Min 55mm up to 1955mm in 50mm increments	Min 55mm up to 1955mm in 50mm increments
Colour	2.7K/3.0K/3.5K/4.0K/5.0K	RGB/RGBCW/RGBWW
Input Voltage	24Vdc	12Vdc
Power Consumption	14W/m	14W/m
Luminaire Efficiency	110 lm/W	N/A
IP Rating	IP44	IP44
Diffuser	Clear	Clear
Clip	Fixed	Fixed
Cable Exit	Rear or End	Rear or End

Order code

LinLED PROFILE IP65-LENGTH-OUTPUT-COLOUR-IP-DIFFUSER-CLIP-CABLE EXIT
 e.g. LED PROFILE IP65-XXmm-HO-3.0K-14W/m-110lm/W-IP44-CLEAR-FIXED-REAR

LENGTH - OUTPUT - COLOUR - IP - DIFFUSER - CLIP - CABLE EXIT
XXmm HO 2.7K IP44 CLEAR FIXED REAR
RGB 3.0K ADJ END
3.5K
4.0K
5.0K
RGB
RGBCW
RGBWW

Drivers

non-dimmable power supplies:

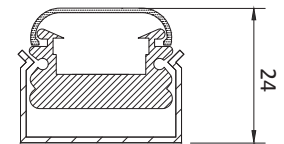
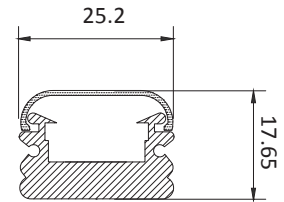
1-10V /DALI/DMX dimmable power supplies to be ordered seperately

Please call our sales team who will make sure specification suits application

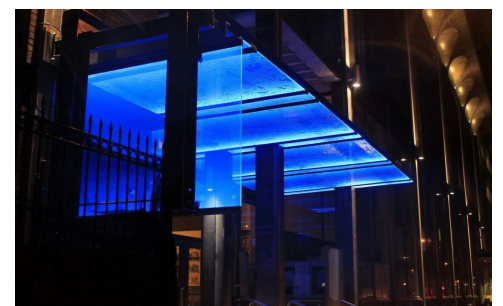
Linear LED Lighting by The Light Lab



X-Sections



Project Example



The Light Lab
 22 Holywell Row
 London EC2A 4JB
 United Kingdom
 +44 (0) 207 278 2678
 @thelightlabtd
 www.thelightlab.com

Product Details: LinLED-COVE



Specification

	HO	SHO	WMIX
Length	90mm min + 83mm increments	90mm + 83mm increments	180mm + 167mm increments
Colour	2.3K/2.7K/3.0K/ 3.5K/3.5K/4.0K/ 5.0K	2.3K/2.7K/3.0K/ 3.5K/3.5K/4.0K/ 5.0K	2.7K/5.3K White Mix
Input Voltage	24Vdc	24Vdc	24Vdc
Power Consumption	19.5 W/m	37 W/m	19.5 W/m
Luminaire Efficiency	127 lm/W	125 lm/W	125 lm/W
IP Rating	IP44	IP44	IP44
Diffuser	Frosted	Frosted	Frosted
Clip	Round plastic	Round Plastic	Round plastic

Order code

LED COVE-LENGTH-OUTPUT-COLOUR-IP-DIFFUSER-CLIP
e.g. LED COVE-XXmm-SHO-2.3K-IP44-FROSTED-RP

LENGTH - OUTPUT - COLOUR - IP - DIFFUSER - CLIP

XXmm	SHO	2.3K	IP44	Frosted	RP
	WMIX	2.7K			
		3.0K			
		3.5K			
		4.0K			
		5.0K			
		5.3K			

Drivers

non-dimmable power supplies:

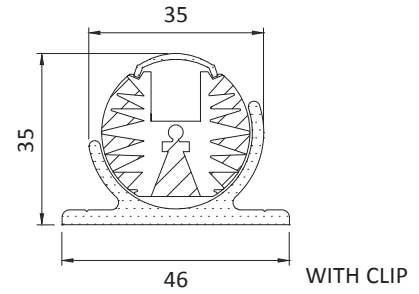
1-10V /DALI/DMX dimmable power supplies to be ordered separately

Please call our sales team who will make sure specification suits application

Linear LED Lighting by The Light Lab



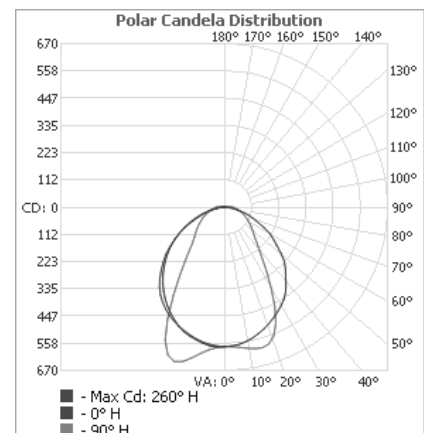
X-Sections



Project Example



Photometric Info



The Light Lab
22 Holywell Row
London EC2A 4JB
United Kingdom
+44 (0) 207 278 2678
@thelightlabtd
www.thelightlab.com

Product Details: LinLED-SHO-OPTIC-BAFFLE



Specification

	350ma	500ma
Length	200mm + 97mm increments	200mm + 97mm increments
Colour	2.25K/2.7K/3.0K/3.5K/4.0K/4.5K/5.3K/6.0K	2.25K/2.7K/3.0K/3.5K/4.0K/4.5K/5.3K/6.0K
Input Current	350ma	500ma
Power Consumption	44 W/m	63 W/m
Luminaire Efficiency	108 lm/W	105 lm/W
IP Rating	IP20	IP20
Optic	15°/20°/45°/ 34° x13°	15°/20°/45°/ 34° x13°
Clip	Rear or End Bracket	Rear or End Bracket

Order code

LinLED SHO OPTIC BAFFLE-LENGTH-CURRENT-COLOUR-IP-OPTIC-CLIP
e.g. LED SHO OPTIC BAFFLE-XXmm-300ma-2.25K-IP20-16-REAR

LENGTH - XXmm	CURRENT - 300ma 500ma	COLOUR - 2.25K 2.7K 3.0K 3.5K 4.0K 4.5K 5.3K 6.0K	IP - IP20	OPTIC - 16 23 46 48x19	CLIP - REAR END
------------------	-----------------------------	---	--------------	------------------------------------	-----------------------

Drivers

non-dimmable power supplies:

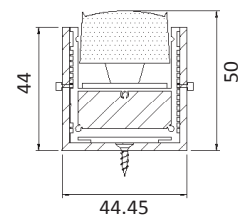
1-10V /DALI/DMX dimmable power supplies to be ordered seperately

Please call our sales team who will make sure specification suits application

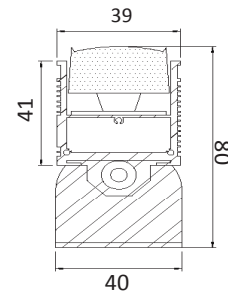
Linear LED Lighting by The Light Lab



X-Sections

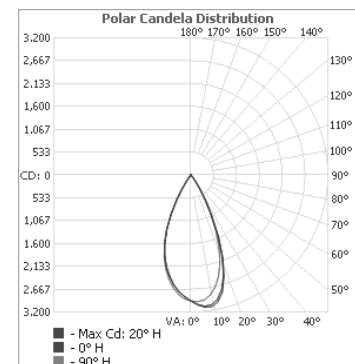
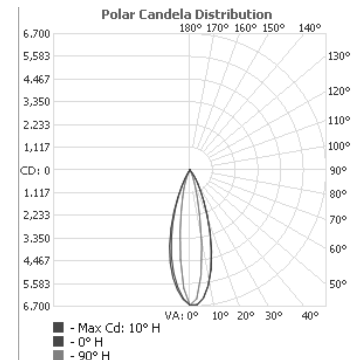


FIXED FITTING



ROTARY FITTING

Photometric Info

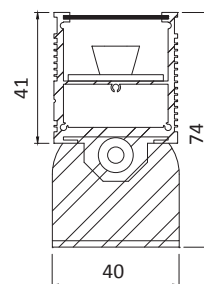
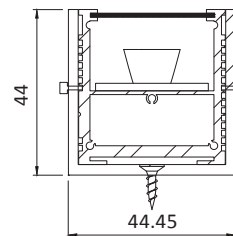


The Light Lab
22 Holywell Row
London EC2A 4JB
United Kingdom
+44 (0) 207 278 2678
@thelightlabtd
www.thelightlab.com

Product Details: LinLED-HO-OPTIC-SINGLE-CHANNEL



X-Sections



Specification

	350ma	700ma
Length	190mm + 167mm increments	200mm + 97mm increments
Colour	2.25K/2.7K/3.0K/3.5K/4.0K/4.5K/5.3K/6.0K	2.25K/2.7K/3.0K/3.5K/4.0K/4.5K/5.3K/6.0K
Input Current	350ma	700ma
Power Consumption	25 W/m	50 W/m
Luminaire Efficiency	108 lm/W	97 lm/W
IP Rating	IP20	IP20
Optic	11°/26°/39°/ 46° x12°	11°/26°/39°/ 46° x12°
Clip	Rear or End Bracket	Rear or End Bracket

Order code

LinLED HO OPTIC SINGLE CHANNEL-LENGTH-CURRENT-COLOUR-IP-OPTIC-CLIP
 e.g. LED HO OPTIC SINGLE CHANNEL-XXmm-350ma-2.25K-IP20-11-REAR

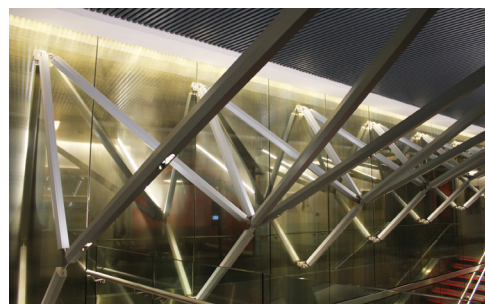
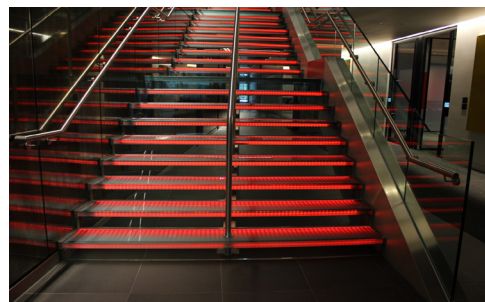
LENGTH - XXmm	CURRENT -	COLOUR -	IP -	OPTIC -	CLIP
	350ma	2.25K	IP20	11	REAR
	700ma	2.7K		26	END
		3.0K		39	
		3.5K		46x12	
		4.0K			
		4.5K			
		5.3K			
		6.0K			

Drivers

non-dimmable power supplies:

1-10V /DALI/DMX dimmable power supplies to be ordered seperately

Project Example

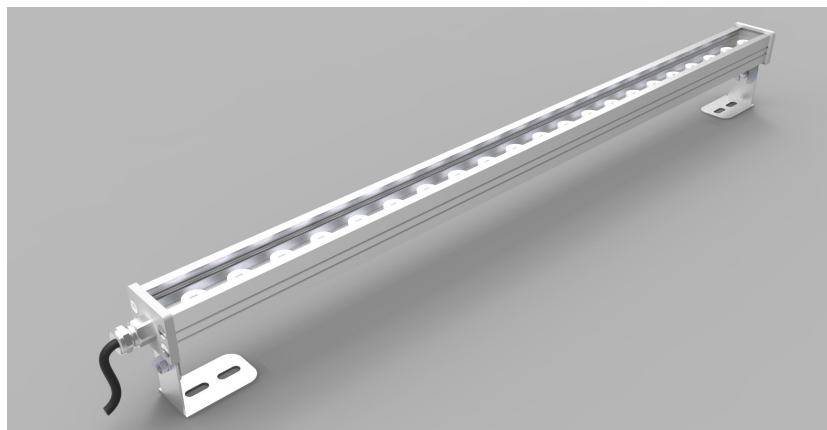


The Light Lab
 22 Holywell Row
 London EC2A 4JB
 United Kingdom
 +44 (0) 207 278 2678
 @thelightlabtd
 www.thelightlab.com

Please call our sales team who will make sure specification suits application

Linear LED Lighting by The Light Lab

Product Details: LinLED-HO-OPTIC-MINI



Specification

Length	120m + 100m increments
Colour	2.7K/3.0K/4.0K/6.0K
Input Voltage	24Vdc
Power Consumption	20 W/m
Luminaire Efficiency	110 lm/W
IP Rating	IP40
Optic	16°/23°/46°/48°x19°
Clip	Clip or Adjustable Bracket
Diffuser	Clear or Frosted

Order code

LinLED HO OPTIC MINI-LENGTH-COLOUR-IP-OPTIC-CLIP-DIFFUSER
 e.g. LED HO OPTIC MINI-XXmm-2.7K-IP40-16-CLIP-CLEAR

LENGTH	COLOUR	IP	OPTIC	CLIP	DIFFUSER
XXmm	2.7K	IP40	16	CLIP	CLEAR
	3.0K		23	AB	FROSTED
	4.0K		46		
	6.0K		48X19		

Drivers

non-dimmable power supplies:

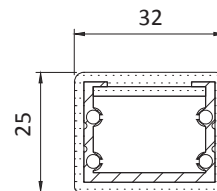
1-10V /DALI/DMX dimmable power supplies to be ordered separately

Please call our sales team who will make sure specification suits application

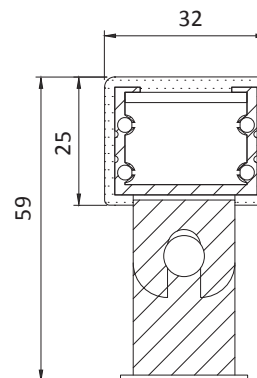
Linear LED Lighting by The Light Lab



X-Sections



WITHOUT BRACKET



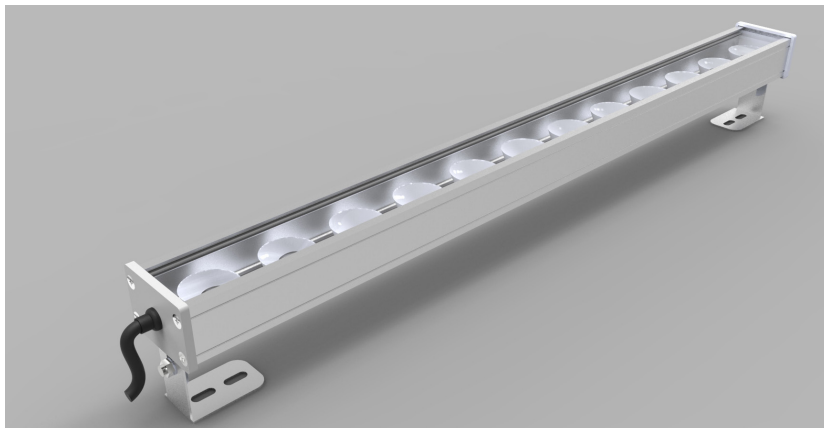
WITH BRACKET

Project Example



The Light Lab
 22 Holywell Row
 London EC2A 4JB
 United Kingdom
 +44 (0) 207 278 2678
 @thelightlabtd
 www.thelightlab.com

Product Details: LinLED-HO-OPTIC-TRI-CHANNEL



Specification

Length	495mm up to 1755mm in 420mm increments
Colour	White Mix or RGB
Input Voltage	24Vdc
Power Consumption	32 W/m
Luminaire Efficiency	83 lm/W for white mix
IP Rating	IP40 or IP65
Optic	7°/14°/26°/40°/9° x48°
Diffuser	Clear or Frosted

Order code

LinLED HO OPTIC TRI CHANNEL-LENGTH-COLOUR-IP-OPTIC-DIFFUSER
 e.g. LED HO OPTIC TRI CHANNEL-XXmm-RGB-IP40-7-CLEAR

LENGTH	COLOUR	IP	OPTIC	DIFFUSER
XXmm	WM	IP40	7	CLEAR
	RGB	IP65	14	FROSTED
			26	
			40	
			9X48	

Drivers

non-dimmable power supplies:

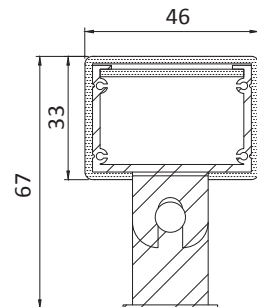
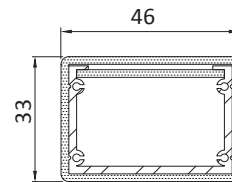
1-10V /DALI/DMX dimmable power supplies to be ordered seperately

Please call our sales team who will make sure specification suits application

Linear LED Lighting by The Light Lab



X-Sections

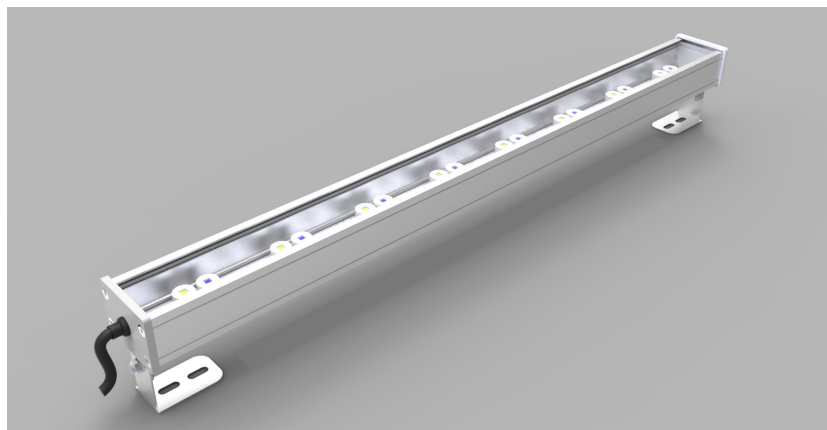


Project Example



The Light Lab
 22 Holywell Row
 London EC2A 4JB
 United Kingdom
 +44 (0) 207 278 2678
 @thelightlabtd
 www.thelightlab.com

Product Details: LinLED-HO-OPTIC-RGBW



Specification

Length	340mm up to 250mm in 1840mm increments
Colour	White Mix or RGB
Input Voltage	24Vdc
Power Consumption	46 W/m
Luminaire Efficiency	85 lm/W for white mix
IP Rating	IP40 or IP65
Optic	20°/28°/40°/45° x18°
Diffuser	Clear or Frosted

Order code

LinLED HO OPTIC RGBW-LENGTH-COLOUR-IP-OPTIC-DIFFUSER
 e.g. LED HO OPTIC RGBW-XXmm-RGB-IP40-20-CLEAR

LENGTH	COLOUR	IP	OPTIC	DIFFUSER
XXmm	WM	IP40	20	CLEAR
	RGB	IP65	28	FROSTED
			40	
			45x18	

Drivers

non-dimmable power supplies:

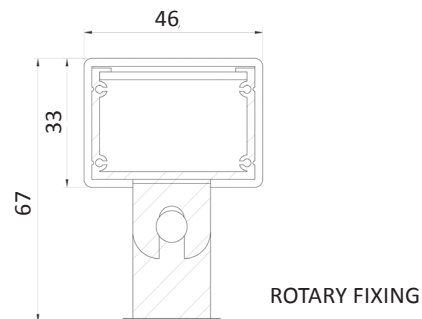
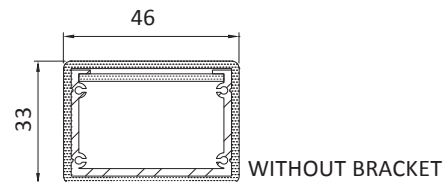
1-10V /DALI/DMX dimmable power supplies to be ordered separately

Please call our sales team who will make sure specification suits application

Linear LED Lighting by The Light Lab



X-Sections

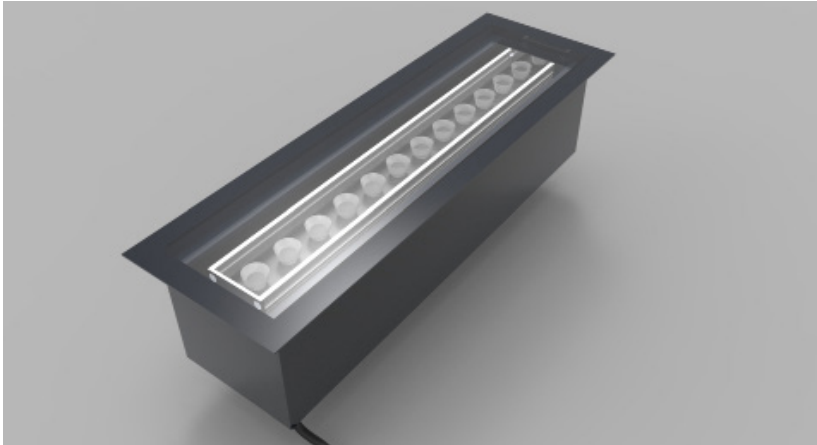


Project Example



The Light Lab
 22 Holywell Row
 London EC2A 4JB
 United Kingdom
 +44 (0) 207 278 2678
 @thelightlabtd
 www.thelightlab.com

Product Details: LinLED-SHO-OPTIC-BAFFLE-FLOOR



Specification

	350ma	500ma
Length	200mm + 97mm increments	200mm + 97mm increments
Colour	2.25K/2.7K/3.0K/3.5K/4.0K/4.5K/5.3K/6.0K	2.25K/2.7K/3.0K/3.5K/4.0K/4.5K/5.3K/6.0K
Input Current	350ma	500ma
Power Consumption	44 W/m	63 W/m
Luminaire Efficiency	108 lm/W	105 lm/W
IP Rating	IP20	IP20
Optic	15°/20°/45°/ 34°x13°	15°/20°/45°/ 34°x13°
Clip	Rear or End Bracket	Rear or End Bracket

Order code

LinLED SHO OPTIC BAFFLE FLOOR-LENGTH-CURRENT-COLOUR-IP-OPTIC-CLIP
e.g. LED SHO OPTIC BAFFLE FLOOR-XXmm-300ma-2.25K-IP20-16-REAR

LENGTH	CURRENT	COLOUR	IP	OPTIC	CLIP
XXmm	300ma	2.25K	IP20	16	REAR
	500ma	2.7K		23	END
		3.0K		46	
		3.5K		48x19	
		4.0K			
		4.5K			
		5.3K			
		6.0K			

Drivers

non-dimmable power supplies:

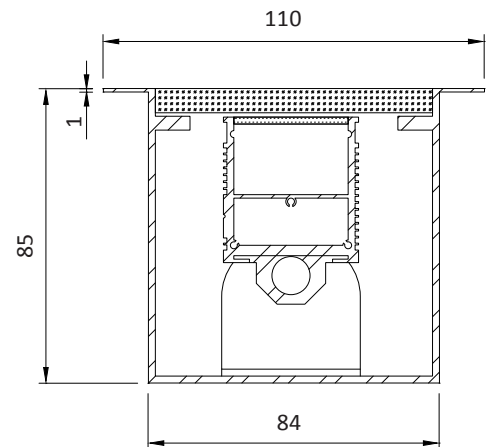
1-10V /DALI/DMX dimmable power supplies to be ordered separately

Please call our sales team who will make sure specification suits application

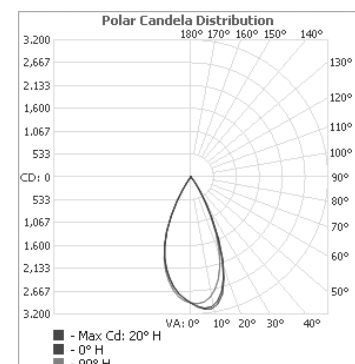
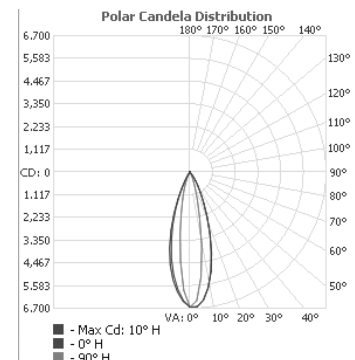
Linear LED Lighting by The Light Lab



X-Sections



Photometric Info



The Light Lab
 22 Holywell Row
 London EC2A 4JB
 United Kingdom
 +44 (0) 207 278 2678
 @thelightlabtd
 www.thelightlab.com

Project Images



30 Cannon Street



Del Aziz, Bermondsey



AON, London



Office interior, London



Andrew Martin, London



Kings Cross Underground Station



The Dorchester Ballroom