



LED Panel

spec sheet

Main Features

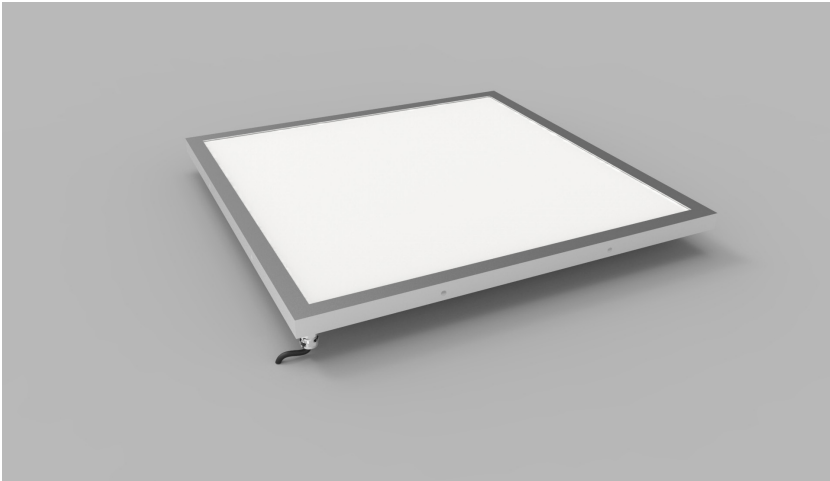
- Even surface illumination with minimal depth
- Polished stainless steel frame system for high end finish
- Trimless design available
- 50 000+ hr lifetime expectancy
- IP44 or IP65 interior/exterior application
- Hidden fixing to suit application

LED Panel by The Light Lab



LED Panel
LED Trimless Panel
LED Light Tile
Glowsheet

Product Details LED Panel



Specification

Dimensions	Max width - 1500mm Max length - 3000mm Min depth - 20mm
Colour	2.7K/3.0K/3.5K/4.0K/5.0K others on application
Input Voltage	24 Vdc
Power Consumption	Approx - 40W sq/M
IP Rating	IP44 or IP65
Lumen Output	c. 3200 lm/sq metre
Frame Finish	Stainless Steel or RAL to finish
Fixing	Wall or Ceiling

Order code
LED PANEL-WIDTH-LENGTH-DEPTH-COLOUR-IP-FINISH-FIXING
e.g. LED PANEL-XXmm-XXmm-XXmm-2.7K-IP44-SS-MAGNET

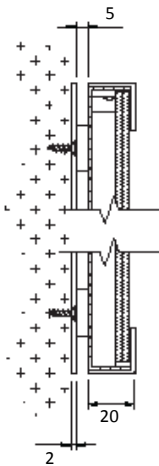
WIDTH	LENGTH	DEPTH	COLOUR	IP	FINISH	FIXING
XXmm	XXmm	XXmm	2.7K	IP44	SS	Wall
			3.0K	IP65	RAL	Ceiling
			3.5K			
			4.0K			
			5.0K			

Drivers
non-dimmable power supplies:
1-10V /DALI/DMX dimmable power supplies to be ordered seperately

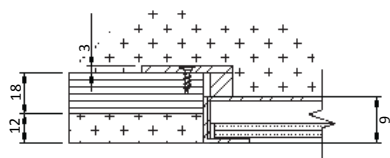
Please call our sales team who will make sure specification suits application
LED Panel by The Light Lab



Fixing Methods

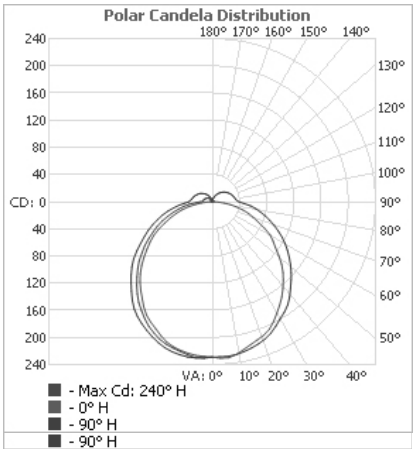


WALL FIXING



CEILING FIXING

Photometric Info



The Light Lab
22 Holywell Row
London EC2A 4JB
United Kingdom
+44 (0) 207 278 2678
@thelightlabtd
www.thelightlab.com

Product Details LED Trimless Panel



Specification

	SO	HO
Dimensions	Max width - 1500mm Max length - 3000mm Standard depth - 50mm	Max width - 1500mm Max length - 3000mm Standard depth - 50mm
Colour	2.7K/3.0K/3.5/4.0K/5.0K others on application	2.7K/3.0K/3.5/4.0K/5.0K others on application
Input Voltage	24Vdc	24Vdc
Power Consumption	max 56W/sq m	155W/sq m
IP Rating	IP44 or IP65	IP 44 or IP 65
Lumen Output	max 3200 lm/ sq m	9525 lm/ sq m
Frame Finish	White	White
Fixing	Wall or Ceiling	Wall or Ceiling

Order code

LED TRIMLESS PANEL-WIDTH-LENGTH-DEPTH-COLOUR-IP-FINISH-FIXING
e.g. LED TRIMLESS PANEL-XXmm-XXmm-XXmm-2.7K-IP44-SS-MAGNET

WIDTH	LENGTH	DEPTH	COLOUR	IP	FINISH	FIXING
XXmm	XXmm	XXmm	2.7K	IP44	White	Wall
			3.0K	IP65		Ceiling
			3.5K			
			4.0K			
			5.0K			

Drivers

non-dimmable power supplies:

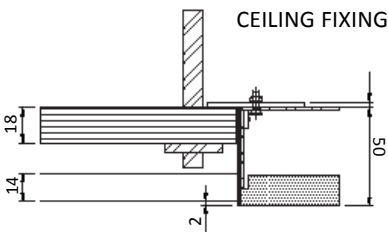
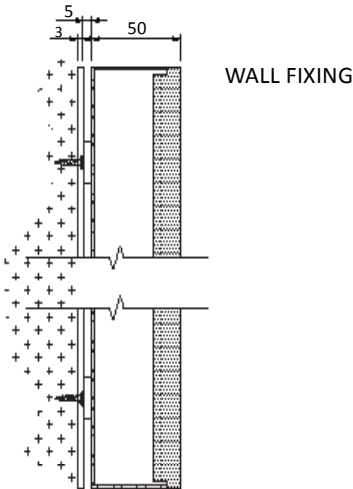
1-10V /DALI/DMX dimmable power supplies to be ordered seperately

Please call our sales team who will make sure specification suits application

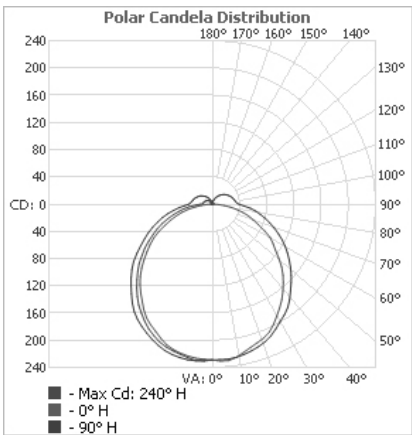
LED Panel by The Light Lab



Fixing Methods

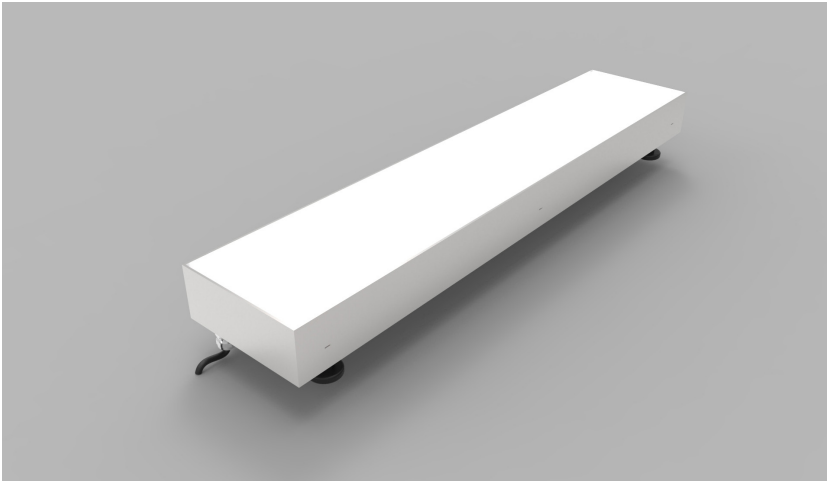


Photometric Info



The Light Lab
22 Holywell Row
London EC2A 4JB
United Kingdom
+44 (0) 207 278 2678
@thelightlabltd
www.thelightlab.com

Product Details LED Light Tile



Specification

Dimensions	Max width - 1000mm Max length - 1500mm Min depth - 80mm
Colour	2.7K/3.0K//4.0K/5.0K or RGB
Input Voltage	24 Vdc
Power Consumption	Approx - 40W sq/M
IP Rating	IP67
Finish	316 Stainless Steel
Loadings	Drive Over or Walk Over Loadings to suit
Fixings	Adjustable feet

Order code
LED LIGHT TILE-WIDTH-LENGTH-DEPTH-COLOUR-IP-LOADINGS
e.g. LED TRIMLESS PANEL-XXmm-XXmm-2.7K-IP67-SS-DO

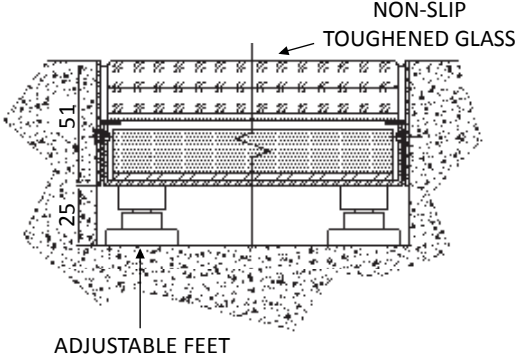
WIDTH	LENGTH	DEPTH	COLOUR	IP	FINISH	LOADINGS
XXmm	XXmm	XXmm	2.7K	IP67	SS	DO
			3.0K			WO
			4.0K			
			5.0K			
			RGB			

Drivers
non-dimmable power supplies:
1-10V /DALI/DMX dimmable power supplies to be ordered seperately

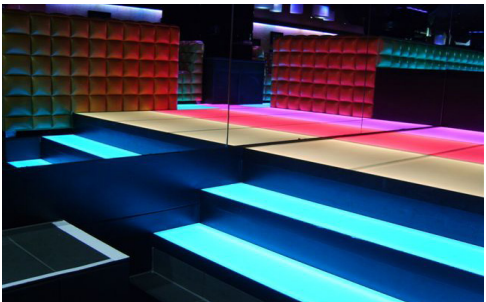
Please call our sales team who will make sure specification suits application
LED Panel by The Light Lab



X-Section

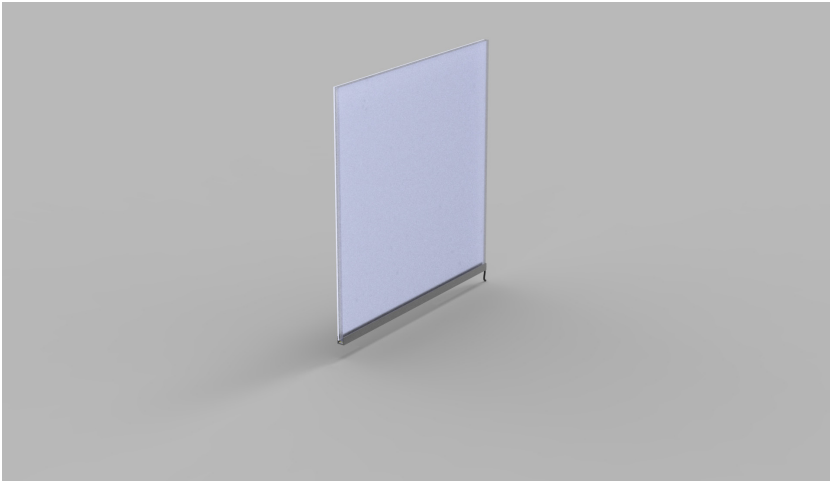


Project Examples



The Light Lab
22 Holywell Row
London EC2A 4JB
United Kingdom
+44 (0) 207 278 2678
@thelightlabltd
www.thelightlab.com

Product Details Glowsheet



Specification

Dimensions	Max width - 2000mm Max length - 3000mm
Material Thickness	5mm/8mm/10mm or 12mm
LED Colours	2.7K/3.0K/3.5K/4.0K/5.0K/ or Single Colours to suit RGB/RGBCW/RGBWW or White Mix 3.0K/5.0K
Input Voltage	24Vdc
IP Rating	IP20 or IP65
Frame Finish	Aluminium

Order code
GLOWSHEET-WIDTH-LENGTH-THICKNESS-COLOUR-IP-FINISH
e.g. GLOWSHEET-XXmm-XXmm-XXmm-2.7K-IP20-ALI

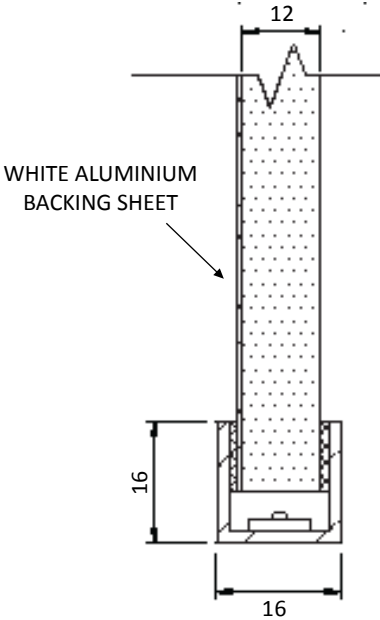
WIDTH	LENGTH	THICKNESS	COLOUR	IP	FINISH
XXmm	XXmm	5mm	2.7K	IP20	ALI
		8mm	3.0K	IP65	
		10mm	3.5K		
			4.0K		
			5.0K		
			RGB		
			RGBCW		
			RGBWW		
			WM 3.0K		
			WM 5.0K		

Drivers
non-dimmable power supplies:
1-10V /DALI/DMX dimmable power supplies to be ordered seperately

Please call our sales team who will make sure specification suits application
LED Panel by The Light Lab



Typical X-Section

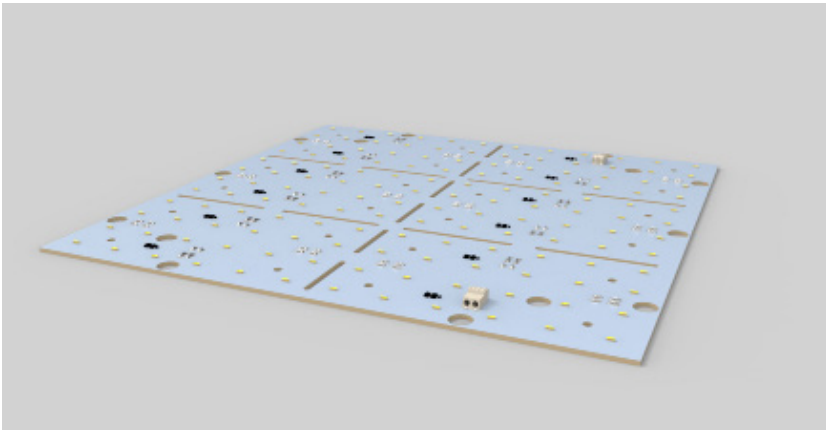


Project Examples



The Light Lab
22 Holywell Row
London EC2A 4JB
United Kingdom
+44 (0) 207 278 2678
@thelightlabltd
www.thelightlab.com

Product Details: LED Matrix



Specification

	SO	HO
Dimension	275mm x 275mm	275mm x 275mm
Colour	2.7K/3.0K/4.0K/5.0K	2.7K/3.0K/4.0K/5.0K
Input Voltage	24Vdc	24Vdc
Power Consumption	39mm	22mm
LED Pitch	8.4W	11.5W
Luminaire Efficiency	120 lm/W	120 lm/W
Operating Temp	-15 ° + to 40 °	-15 ° + to 40 °

Order code

LinLED MATRIX-DIM-output-COLOUR-PITCH
e.g. LED MATRIX-XX-SO-3.0K-39mm

DIM	-	OUTPUT	-	COLOUR	-	PITCH
XXmm		SO		2.7K		39mm
		HO		3.0K		22mm
				4.0K		
				5.0K		

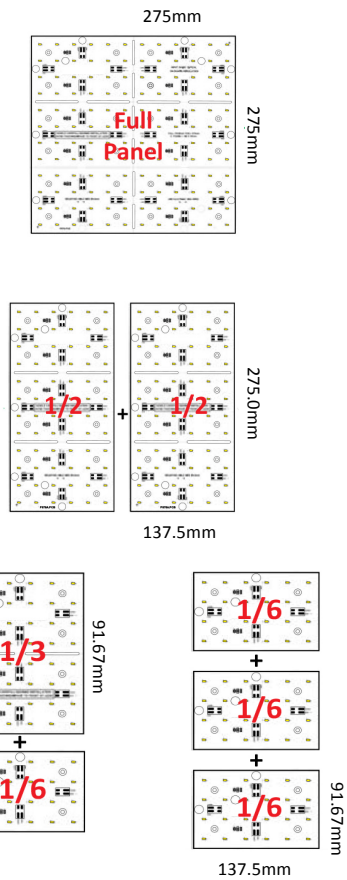
Drivers

non-dimmable power supplies:

1-10V /DALI/DMX dimmable power supplies to be ordered seperately

Please call our sales team who will make sure specification suits application

Linear LED Lighting by The Light Lab



Project Example



The Light Lab
22 Holywell Row
London EC2A 4JB
United Kingdom
+44 (0) 207 278 2678
@thelightlabtd
www.thelightlab.com

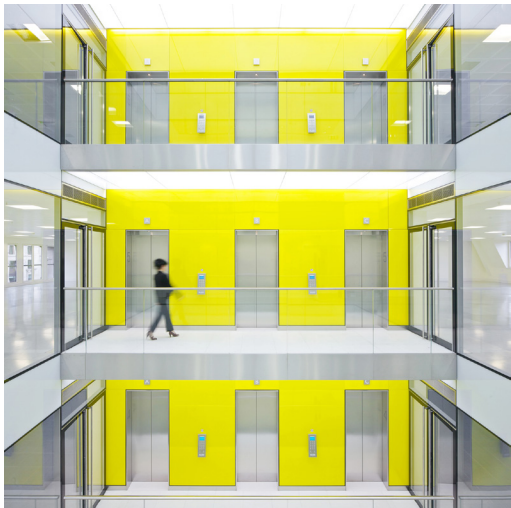
Project Images



Sadler's Wells Theatre



Breakspear Park



Victoria Marketing Suite



One Canada Sqaure