



# LED Panel

spec sheet

## Main Features

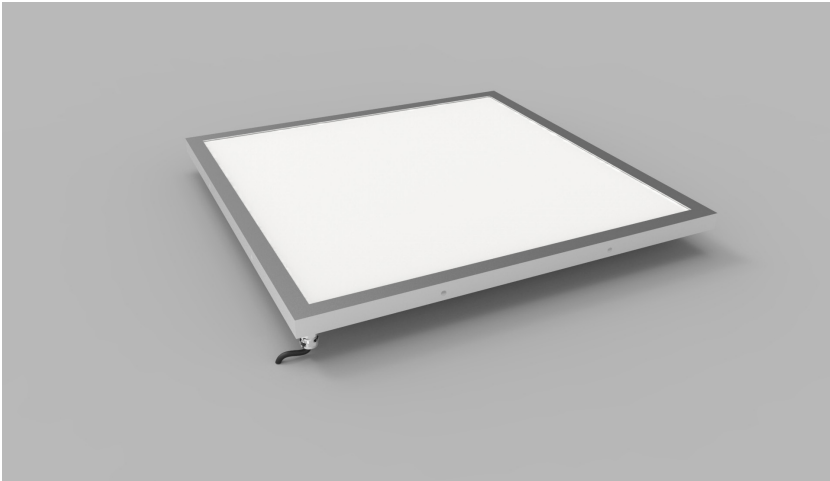
- Even surface illumination with minimal depth
- Polished stainless steel frame system for high end finish
- Trimless design available
- 50 000+ hr lifetime expectancy
- IP44 or IP65 interior/exterior application
- Hidden fixing to suit application

LED Panel by The Light Lab



LED Panel  
LED Trimless Panel  
LED Light Tile  
Glowsheet

# Product Details LED Panel



## Specification

Dimensions	Max width - 1500mm Max length - 3000mm Min depth - 20mm
Colour	2.7K/3.0K/3.5K/4.0K/5.0K others on application
Input Voltage	24 Vdc
Power Consumption	Approx - 40W sq/M
IP Rating	IP44 or IP65
Lumen Output	c. 3200 lm/sq metre
Frame Finish	Stainless Steel or RAL to finish
Fixing	Wall or Ceiling

**Order code**  
LED PANEL-WIDTH-LENGTH-DEPTH-COLOUR-IP-FINISH-FIXING  
e.g. LED PANEL-XXmm-XXmm-XXmm-2.7K-IP44-SS-MAGNET

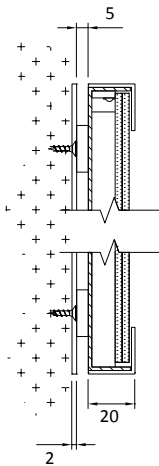
WIDTH	LENGTH	DEPTH	COLOUR	IP	FINISH	FIXING
XXmm	XXmm	XXmm	2.7K	IP44	SS	Wall
			3.0K	IP65	RAL	Ceiling
			3.5K			
			4.0K			
			5.0K			

**Drivers**  
non-dimmable power supplies:  
1-10V /DALI/DMX dimmable power supplies to be ordered seperately

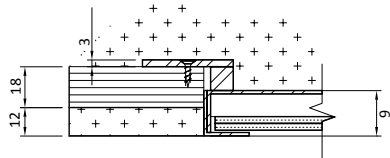
Please call our sales team who will make sure specification suits application  
LED Panel by The Light Lab



## Fixing Methods

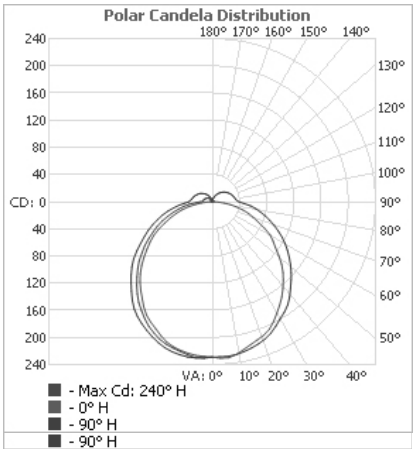


WALL FIXING



CEILING FIXING

## Photometric Info



The Light Lab  
22 Holywell Row  
London EC2A 4JB  
United Kingdom  
+44 (0) 207 278 2678  
@thelightlabld  
www.thelightlab.com

# Product Details LED Trimless Panel



## Specification

	SO	HO
Dimensions	Max width - 1500mm Max length - 3000mm Standard depth - 50mm	Max width - 1500mm Max length - 3000mm Standard depth - 50mm
Colour	2.7K/3.0K/3.5/4.0K/5.0K others on application	2.7K/3.0K/3.5/4.0K/5.0K others on application
Input Voltage	24Vdc	24Vdc
Power Consumption	max 56W/sq m	155W/sq m
IP Rating	IP44 or IP65	IP 44 or IP 65
Lumen Output	max 3200 lm/ sq m	9525 lm/ sq m
Frame Finish	White	White
Fixing	Wall or Ceiling	Wall or Ceiling

### Order code

LED TRIMLESS PANEL-WIDTH-LENGTH-DEPTH-COLOUR-IP-FINISH-FIXING  
e.g. LED TRIMLESS PANEL-XXmm-XXmm-XXmm-2.7K-IP44-SS-MAGNET

WIDTH -	LENGTH -	DEPTH -	COLOUR -	IP -	FINISH -	FIXING
XXmm	XXmm	XXmm	2.7K	IP44	White	Wall
			3.0K	IP65		Ceiling
			3.5K			
			4.0K			
			5.0K			

### Drivers

non-dimmable power supplies:

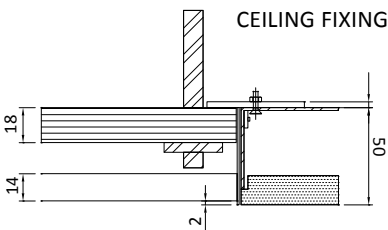
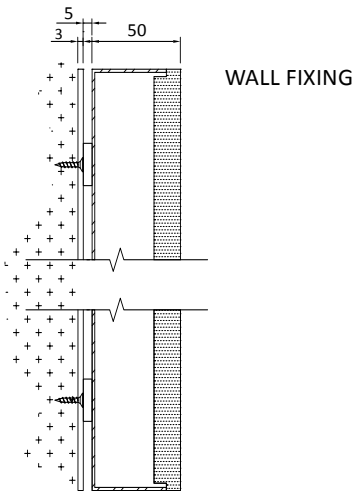
1-10V /DALI/DMX dimmable power supplies to be ordered seperately

Please call our sales team who will make sure specification suits application

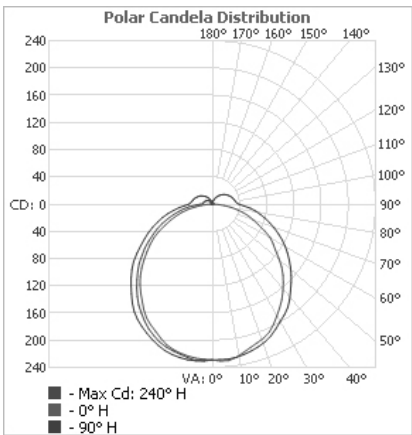
LED Panel by The Light Lab



## Fixing Methods

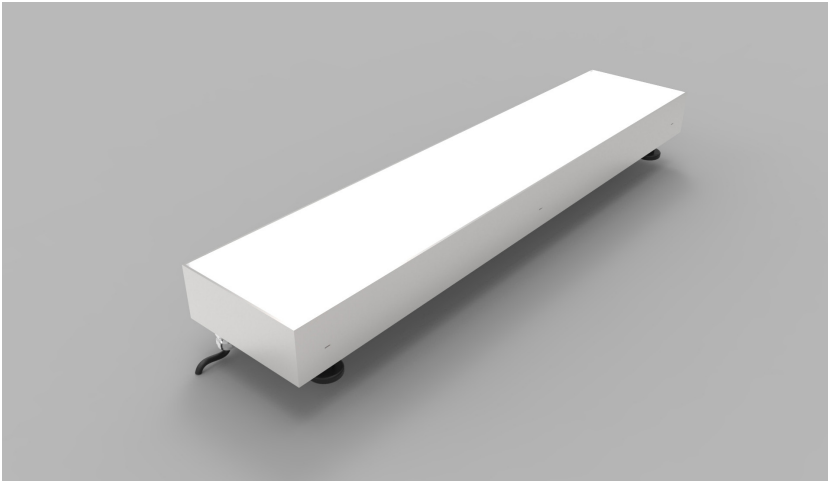


## Photometric Info



The Light Lab  
22 Holywell Row  
London EC2A 4JB  
United Kingdom  
+44 (0) 207 278 2678  
@thelightlabltd  
www.thelightlab.com

# Product Details LED Light Tile



## Specification

Dimensions	Max width - 1000mm Max length - 1500mm Min depth - 80mm
Colour	2.7K/3.0K//4.0K/5.0K or RGB
Input Voltage	24 Vdc
Power Consumption	Approx - 40W sq/M
IP Rating	IP67
Finish	316 Stainless Steel
Loadings	Drive Over or Walk Over Loadings to suit
Fixings	Adjustable feet

**Order code**  
LED LIGHT TILE-WIDTH-LENGTH-DEPTH-COLOUR-IP-LOADINGS  
e.g. LED TRIMLESS PANEL-XXmm-XXmm-2.7K-IP67-SS-DO

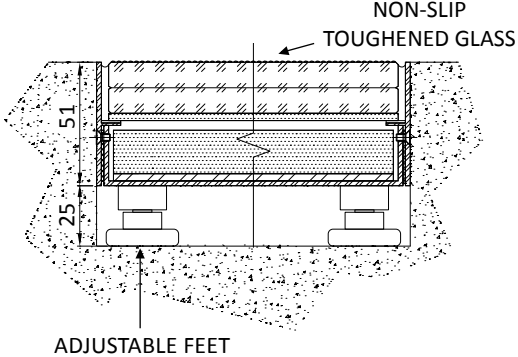
WIDTH	LENGTH	DEPTH	COLOUR	IP	FINISH	LOADINGS
XXmm	XXmm	XXmm	2.7K	IP67	SS	DO
			3.0K			WO
			4.0K			
			5.0K			
			RGB			

**Drivers**  
non-dimmable power supplies:  
1-10V /DALI/DMX dimmable power supplies to be ordered seperately

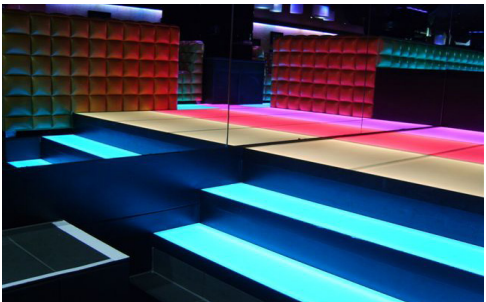
Please call our sales team who will make sure specification suits application  
LED Panel by The Light Lab



## X-Section



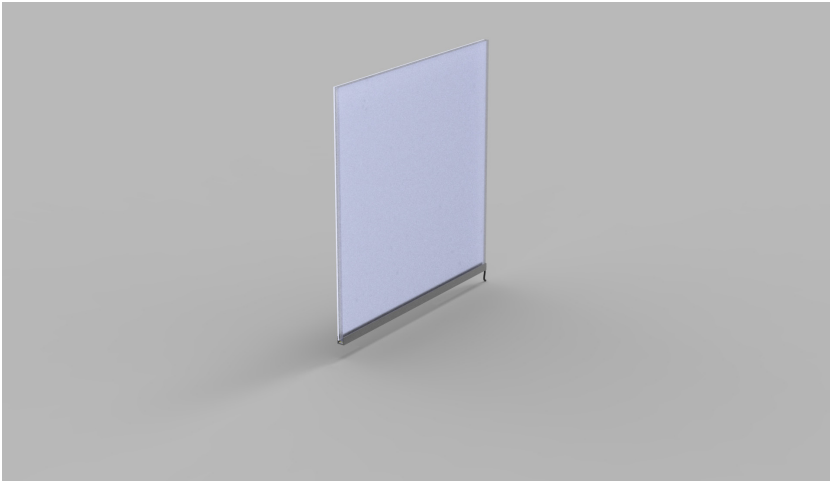
## Project Examples



The Light Lab  
22 Holywell Row  
London EC2A 4JB  
United Kingdom  
+44 (0) 207 278 2678  
@thelightlabltd  
www.thelightlab.com



# Product Details Glowsheet



## Specification

Dimensions	Max width - 2000mm Max length - 3000mm
Material Thickness	5mm/8mm/10mm or 12mm
LED Colours	2.7K/3.0K/3.5K/4.0K/5.0K/ or Single Colours to suit RGB/RGBCW/RGBWW or White Mix 3.0K/5.0K
Input Voltage	24Vdc
IP Rating	IP20 or IP65
Frame Finish	Aluminium

**Order code**  
GLOWSHEET-WIDTH-LENGTH-THICKNESS-COLOUR-IP-FINISH  
e.g. GLOWSHEET-XXmm-XXmm-XXmm-2.7K-IP20-ALI

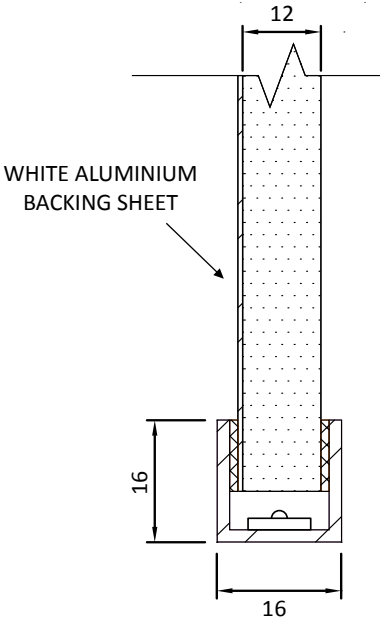
WIDTH	LENGTH	THICKNESS	COLOUR	IP	FINISH
XXmm	XXmm	5mm	2.7K	IP20	ALI
		8mm	3.0K	IP65	
		10mm	3.5K		
			4.0K		
			5.0K		
			RGB		
			RGBCW		
			RGBWW		
			WM 3.0K		
			WM 5.0K		

Drivers
non-dimmable power supplies:
1-10V /DALI/DMX dimmable power supplies to be ordered seperately

Please call our sales team who will make sure specification suits application  
LED Panel by The Light Lab



## Typical X-Section

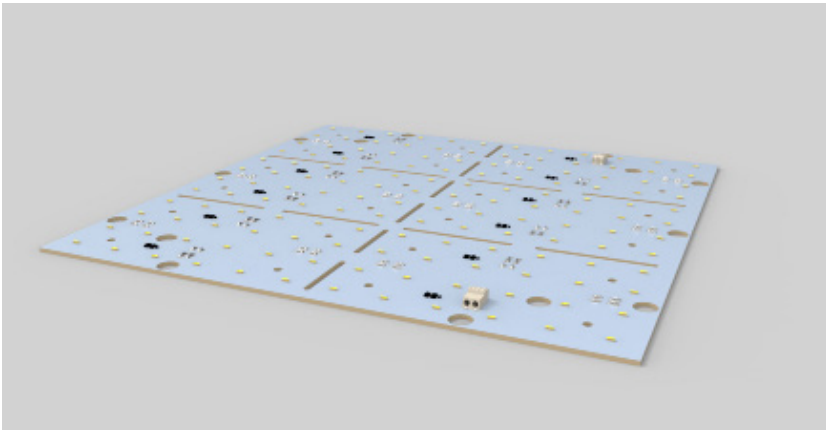


## Project Examples



The Light Lab  
22 Holywell Row  
London EC2A 4JB  
United Kingdom  
+44 (0) 207 278 2678  
@thelightlabltd  
www.thelightlab.com

# Product Details: LED Matrix



## Specification

	SO	HO
Dimension	275mm x 275mm	275mm x 275mm
Colour	2.7K/3.0K/4.0K/5.0K	2.7K/3.0K/4.0K/5.0K
Input Voltage	24Vdc	24Vdc
Power Consumption	39mm	22mm
LED Pitch	8.4W	11.5W
Luminaire Efficiency	120 lm/W	120 lm/W
Operating Temp	-15 ° + to 40 °	-15 ° + to 40 °

### Order code

LinLED MATRIX-DIM-output-COLOUR-PITCH  
e.g. LED MATRIX-XX-SO-3.0K-39mm

DIM	-	OUTPUT	-	COLOUR	-	PITCH
XXmm		SO		2.7K		39mm
		HO		3.0K		22mm
				4.0K		
				5.0K		

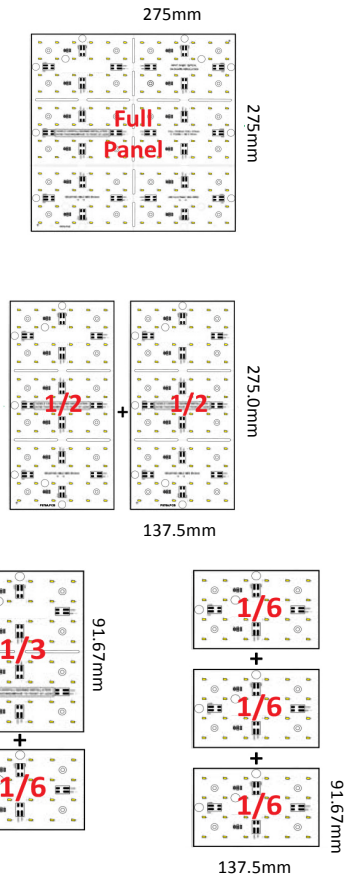
### Drivers

non-dimmable power supplies:

1-10V /DALI/DMX dimmable power supplies to be ordered seperately

Please call our sales team who will make sure specification suits application

Linear LED Lighting by The Light Lab



## Project Example



The Light Lab  
22 Holywell Row  
London EC2A 4JB  
United Kingdom  
+44 (0) 207 278 2678  
@thelightlabtd  
www.thelightlab.com

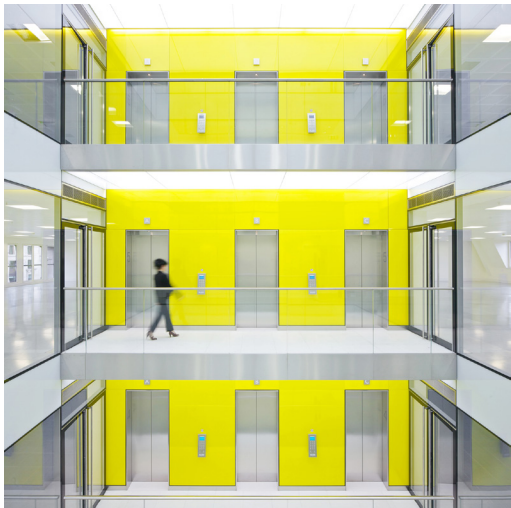
Project Images



Sadler's Wells Theatre



Breakspear Park



Victoria Marketing Suite



One Canada Sqaure