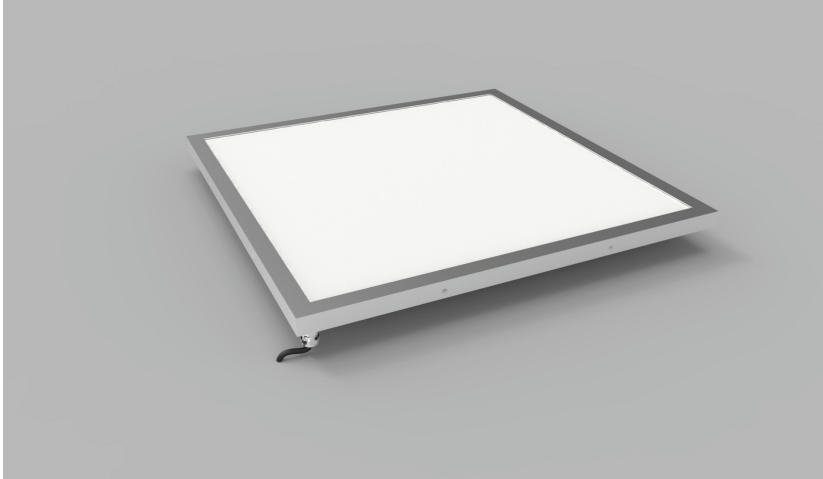


Product Details LED Panel



Specification

Dimensions	Max width - 1500mm Max length - 3000mm Min depth - 20mm
Colour	2.7K/3.0K/3.5K/4.0K/5.0K others on application
Input Voltage	24 Vdc
Power Consumption	Approx - 40W sq/M
IP Rating	IP44 or IP65
Lumen Output	c. 3200 lm/sq metre
Frame Finish	Stainless Steel or RAL to finish
Fixing	Wall or Ceiling

Order code
LED PANEL-WIDTH-LENGTH-DEPTH-COLOUR-IP-FINISH-FIXING
e.g. LED PANEL-XXmm-XXmm-XXmm-2.7K-IP44-SS-MAGNET

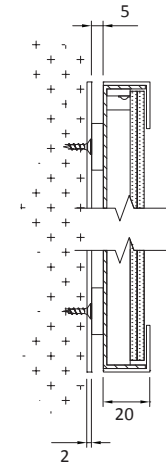
WIDTH	LENGTH	DEPTH	COLOUR	IP	FINISH	FIXING
XXmm	XXmm	XXmm	2.7K	IP44	SS	Wall
			3.0K	IP65	RAL	Ceiling
			3.5K			
			4.0K			
			5.0K			

Drivers
non-dimmable power supplies:
1-10V /DALI/DMX dimmable power supplies to be ordered seperately

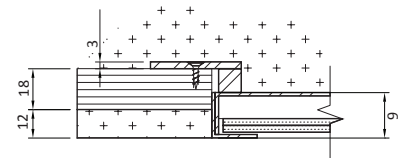
Please call our sales team who will make sure specification suits application
LED Panel by The Light Lab



Fixing Methods

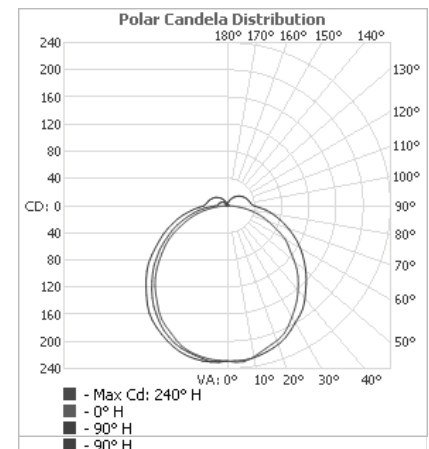


WALL FIXING



CEILING FIXING

Photometric Info



The Light Lab
22 Holywell Row
London EC2A 4JB
United Kingdom
+44 (0) 207 278 2678
@thelightlabld
www.thelightlab.com