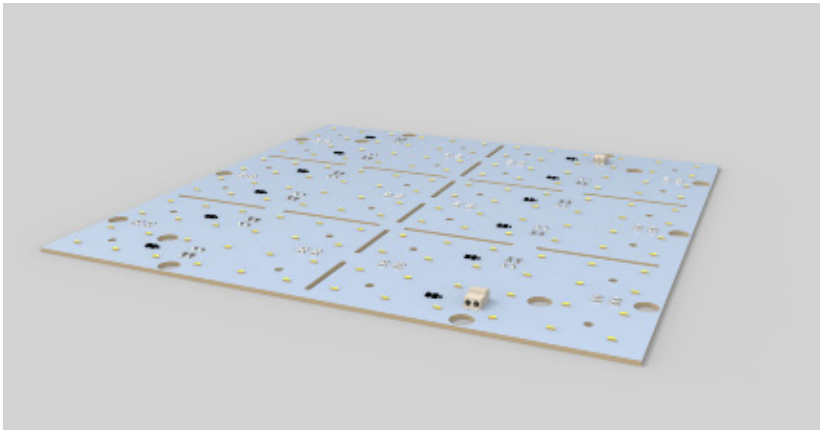


Product Details: LED Matrix



Specification

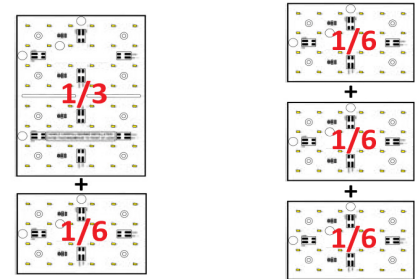
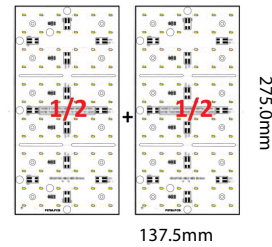
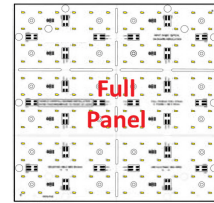
	SO	HO
Dimension	275 x 275mm	275mm
Colour	2.7K/3.0K/4.0K/5.0K	2.7K/3.0K/4.0K/5.0K
Input Voltage	24Vdc	24Vdc
Power Consumption	8.4W	11.5W
Luminaire Efficiency	120 lm/W	120 lm/W
Operating Temp	-15 + to 40	-15 + to 40
LED Pitch	39mm	22mm

Order code
 LinLED MATRIX-LENGTH-COLOUR-PITCH
 e.g. LED MATRIX-XX-SO-3.0K-39MM

DIM	-	OUTPUT	-	COLOUR	-	PITCH
XXmm		SO		2.7K		39mm
		HO		3.0K		22mm
				4.0K		
				5.0K		

Drivers
 non-dimmable power supplies:
1-10V /DALI/DMX dimmable power supplies to be ordered seperately

Please call our sales team who will make sure specification suits application
 Linear LED Lighting by The Light Lab



Project Example



The Light Lab
 22 Holywell Row
 London EC2A 4JB
 United Kingdom
+44 (0) 207 278 2678
 @thelightlabtd
 www.thelightlab.com