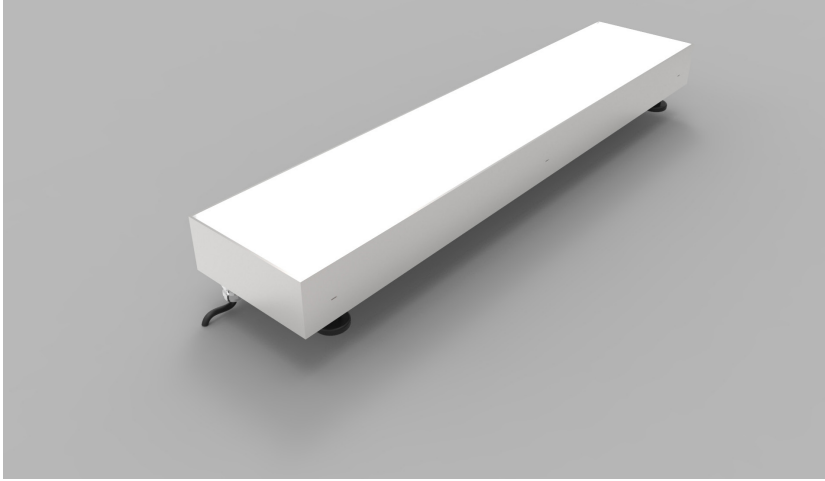


Product Details LED Light Tile



Specification

Dimensions	Max width - 1000mm Max length - 1500mm Min depth - 80mm
Colour	2.7K/3.0K//4.0K/5.0K or RGB
Input Voltage	24 Vdc
Power Consumption	Approx - 40W sq/M
IP Rating	IP67
Finish	316 Stainless Steel
Loadings	Drive Over or Walk Over Loadings to suit
Fixings	Adjustable feet

Order code

LED LIGHT TILE-WIDTH-LENGTH-DEPTH-COLOUR-IP-LOADINGS
e.g. LED TRIMLESS PANEL-XXmm-XXmm-2.7K-IP67-SS-DO

WIDTH	LENGTH	DEPTH	COLOUR	IP	FINISH	LOADINGS
XXmm	XXmm	XXmm	2.7K	IP67	SS	DO
			3.0K			WO
			4.0K			
			5.0K			
			RGB			

Drivers

non-dimmable power supplies:

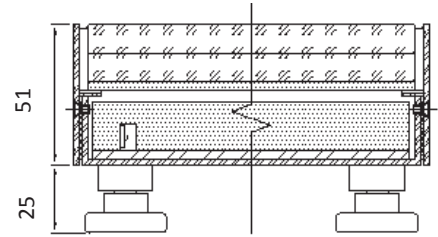
1-10V /DALI/DMX dimmable power supplies to be ordered seperately

Please call our sales team who will make sure specification suits application

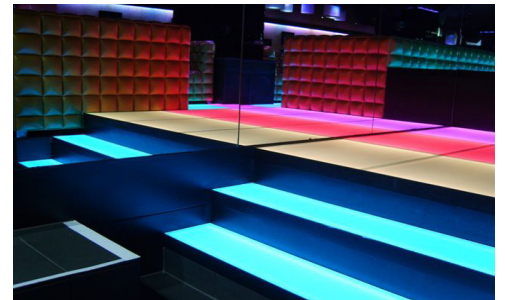
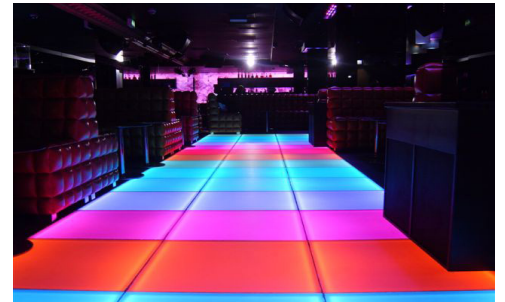
LED Panel by The Light Lab



X-Section



Project Examples



GETTING MORE PROJECT IMAGES



The Light Lab
22 Holywell Row
London EC2A 4JB
United Kingdom
+44 (0) 207 278 2678
@thelightlabld
www.thelightlab.com