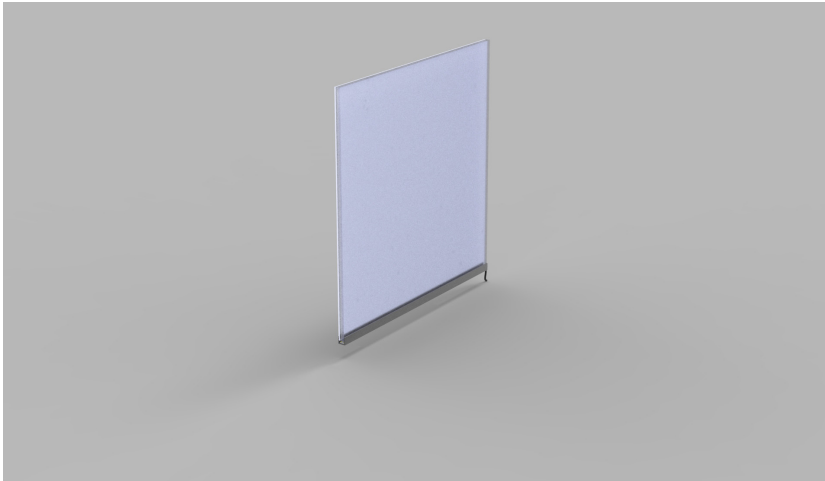


Product Details Glowsheet



Specification

Dimensions	Max width - 2000mm Max length - 3000mm
Material Thickness	5mm/8mm/10mm or 12mm
LED Colours	2.7K/3.0K/3.5K/4.0K/5.0K/ or Single Colours to suit RGB/RGBCW/RGBWW or White Mix 3.0K/5.0K
Input Voltage	24Vdc
IP Rating	IP20 or IP65
Frame Finish	Aluminium

Order code

GLOWSHEET-WIDTH-LENGTH-THICKNESS-COLOUR-IP-FINISH
e.g. GLOWSHEET-XXmm-XXmm-XXmm-2.7K-IP20-ALI

WIDTH	LENGTH	THICKNESS	COLOUR	IP	FINISH
XXmm	XXmm	5mm	2.7K	IP20	ALI
		8mm	3.0K	IP65	
		10mm	3.5K		
			4.0K		
			5.0K		
			RGB		
			RGBCW		
			RGBWW		
			WM 3.0K		
			WM 5.0K		

Drivers

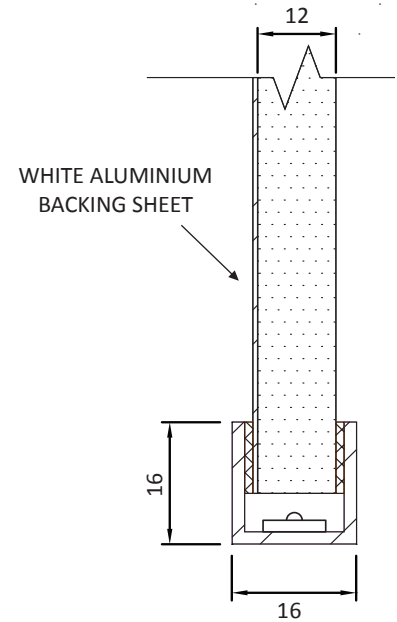
non-dimmable power supplies:
1-10V /DALI/DMX dimmable power supplies to be ordered seperately

Please call our sales team who will make sure specification suits application

LED Panel by The Light Lab



Typical X-Section



Project Examples



The Light Lab
22 Holywell Row
London EC2A 4JB
United Kingdom
+44 (0) 207 278 2678
@thelightlabtd
www.thelightlab.com