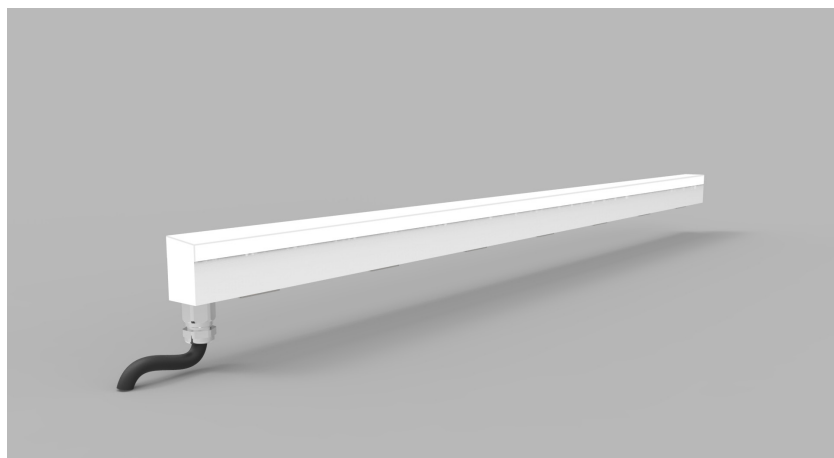


# Product Details GL16



## Specification

	SO	HO	SHO
Length	See tech info	See tech info	See tech
Colour	3.0K/4.0K/ 5.0K	2.7K/3.5K/ 4.0K/5.0K	3.0K/3.5K/ 4.0K/5.0K
Input Voltage	24Vdc	24Vdc	24Vdc
Power Consumption	9.6 W/m	14 W/m	18 W/m
Luminaire Efficiency	56 lm/W	78 lm/W	72 lm/W
IP Rating	IP44 or IP65	IP44 or IP65	IP44 or IP65
Type	Flush or Proud	Flush or Proud	Flush or Proud

### Order code

GL16-LENGTH-OUTPUT-COLOUR-TYPE-IP-FIXING  
e.g. GL16-XXmm-SO-2.7K-FLUSH-IP44-VC

WIDTH	LENGTH	OUTPUT	COLOUR	TYPE	IP	FIXING
GL16	XXmm	SO	2.3K	Flush	IP44	S
		HO	2.7K	Proud	IP65	C
		SHO	3.0K			PLS
			3.5K			
			4.0K			
			5.0K			

### Drivers

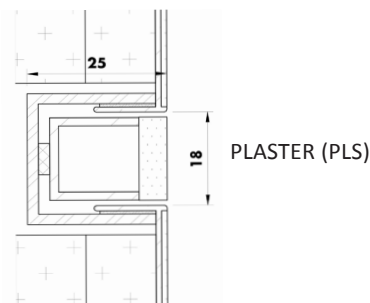
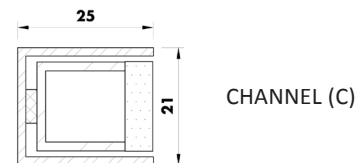
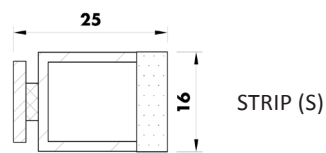
non-dimmable power supplies:  
1-10V /DALI/DMX dimmable power supplies to be ordered separately

Please call our sales team who will make sure specification suits application

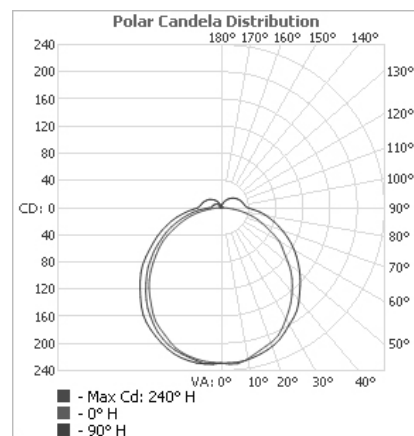
Glowline by The Light Lab



## Fixing Methods



## Photometric Info



The Light Lab  
22 Holywell Row  
London EC2A 4JB  
United Kingdom  
+44 (0) 207 278 2678  
@thelightlabltd  
www.thelightlab.com