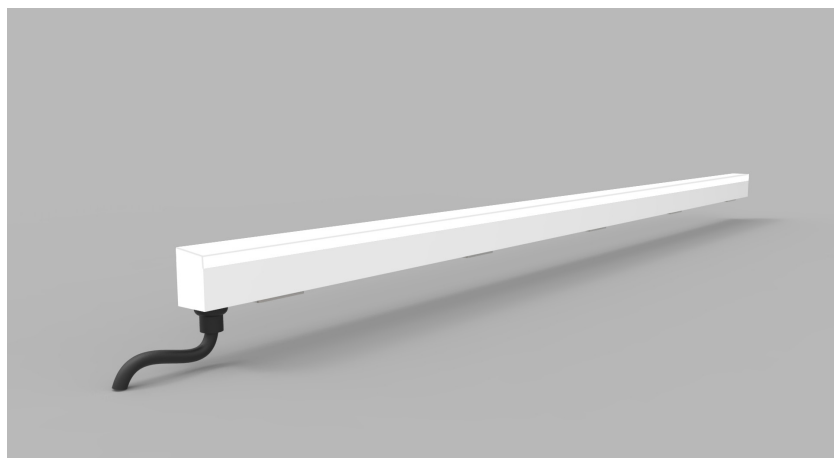


Product Details GL12



Specification

	SO
Length	115mm to 2965mm in 50mm increments
Colour	3.0K/4.0K/5.0K
Input Voltage	24Vdc
Power Consumption	9.6 W/m
Luminaire Efficiency	56 lm/W
IP Rating	IP44 or IP65
Type	Flush or Proud

Order code

GL12-LENGTH-COLOUR-TYPE-IP-FIXING
 e.g. GL25-XXmm-2.7K-FLUSH-IP44-VC

WIDTH	LENGTH	COLOUR	TYPE	IP	FIXING
GL12	XXmm	3.0K	Flush	IP44	S
		4.0K	Proud	IP65	C
		5.0K			PLS

Drivers

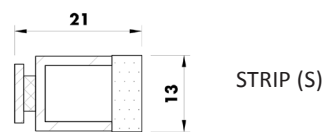
non-dimmable power supplies:
 1-10V /DALI/DMX dimmable power supplies to be ordered separately

Please call our sales team who will make sure specification suits application

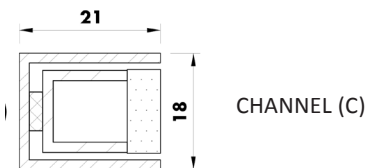
Glowline by The Light Lab



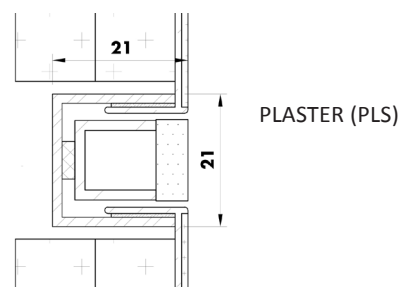
Fixing Methods



STRIP (S)

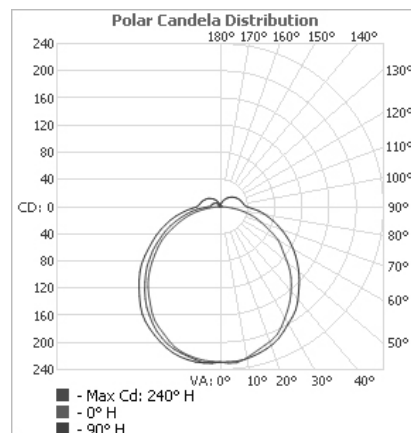


CHANNEL (C)



PLASTER (PLS)

Photometric Info



The Light Lab
 22 Holywell Row
 London EC2A 4JB
 United Kingdom
 +44 (0) 207 278 2678
 @thelightlabltd
 www.thelightlab.com