

Product: Glowrail - LED Handrail
Project: Hiscox, York

Lighting Designer: Chapman BDSP
Architect: MAKE
Contractor: BAM // Leather sub-contractor: Harcourt Design

Date complete: Nov 2015

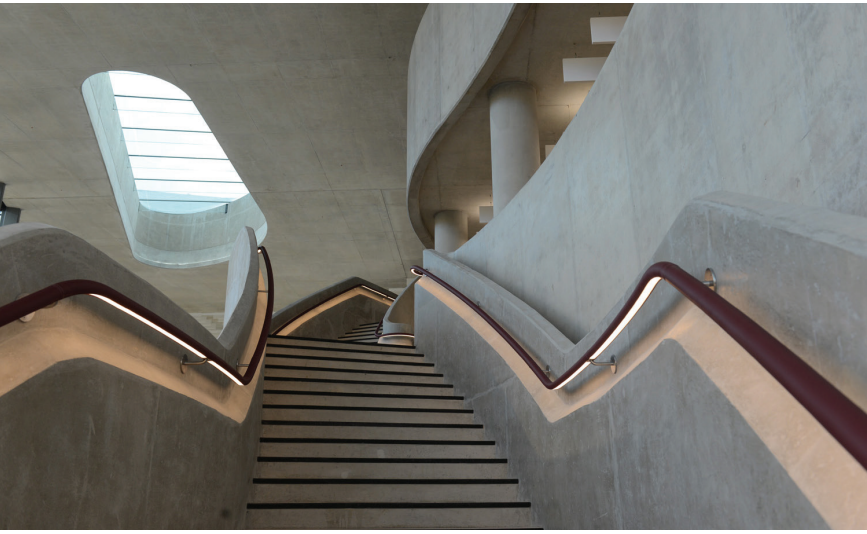
Project Description

- Helical curved handrail to follow curvature of concrete upstands - 100m in total
- light to be continuous, to curve and returns
- illumination to 150 lux on stairs with 3 hour emergency back up
- handrails clad in leather finish

Install photos

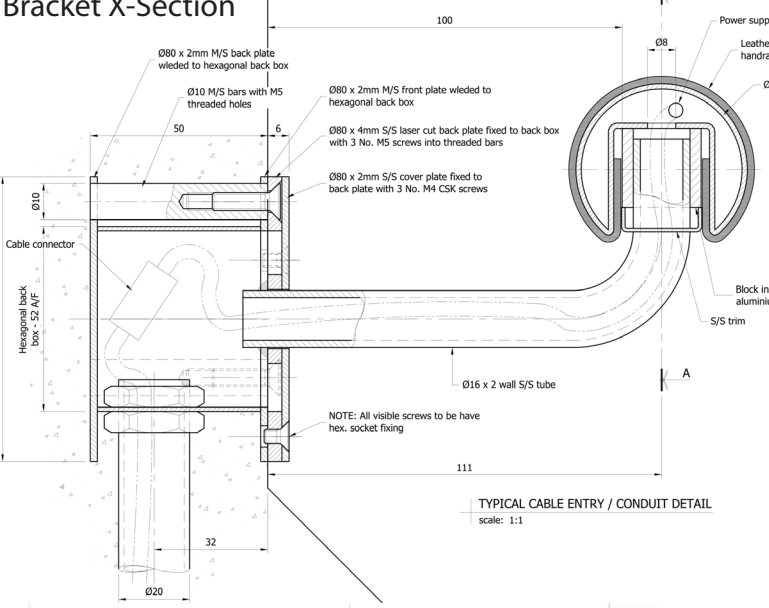


Project Images

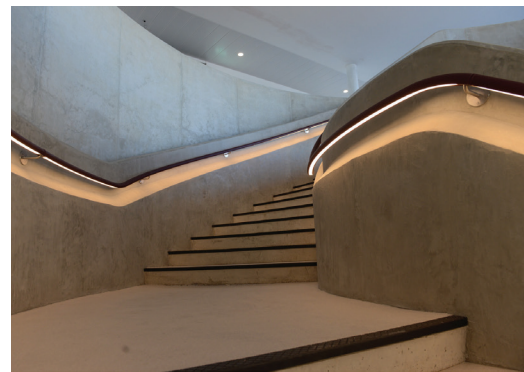
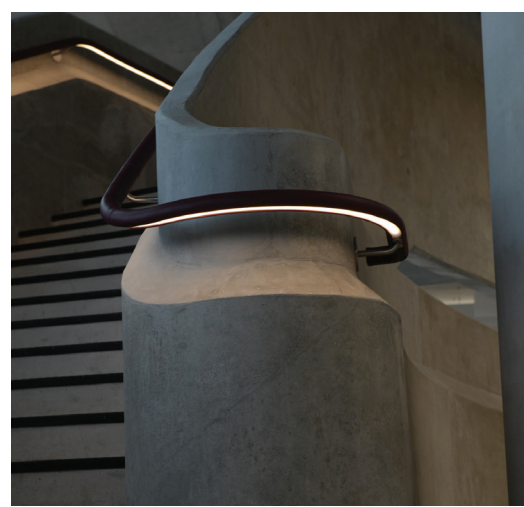
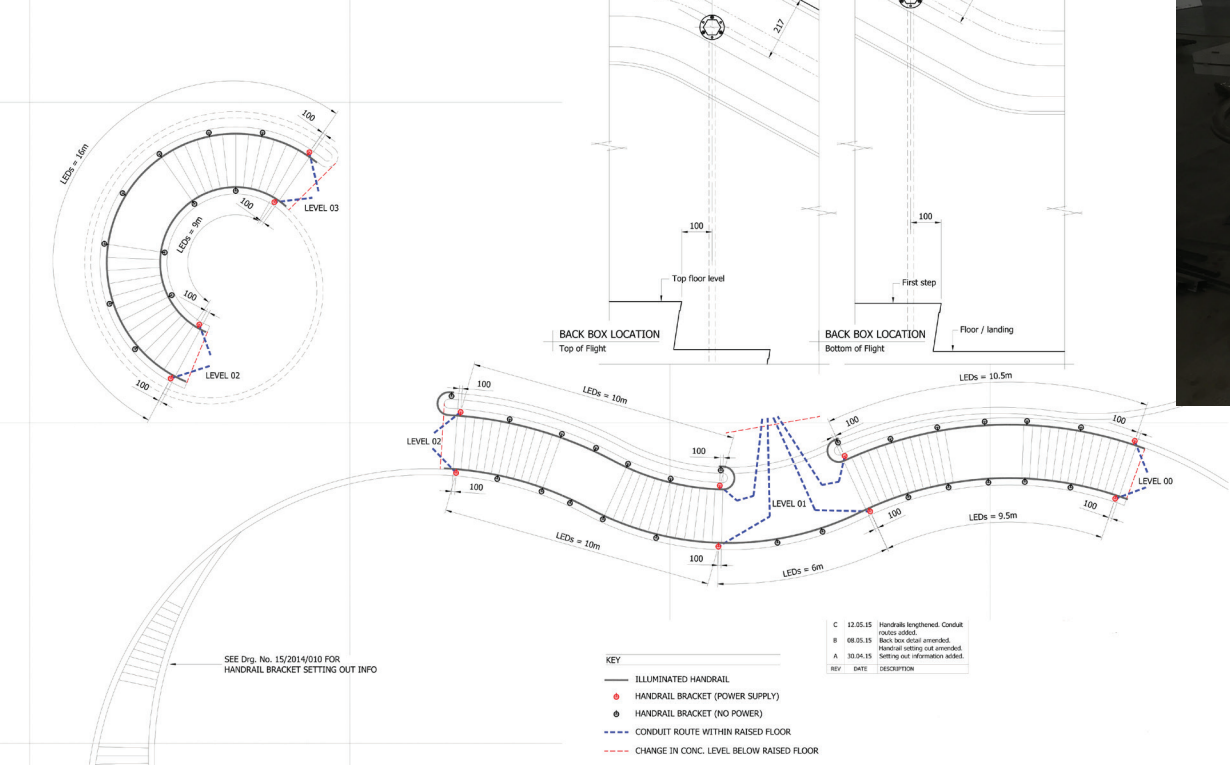


Install drawings

Bracket X-Section



Example setting out



Glowrail Specification

Colour temp: 3.0K
Total power: 14W/m
incl. diffuser
Lumen output: 1155 lm/m
LED Efficiency: 82.5 lm/W

The Light Lab
22 Holywell Row
London EC2A 4JB
United Kingdom

+44 (0) 207 278 2678
www.thelightlab.com

Company Reg. No: 4406351
Reg. Office: 22 Holywell Row, London EC2A 4JB

the light lab
bright ideas