

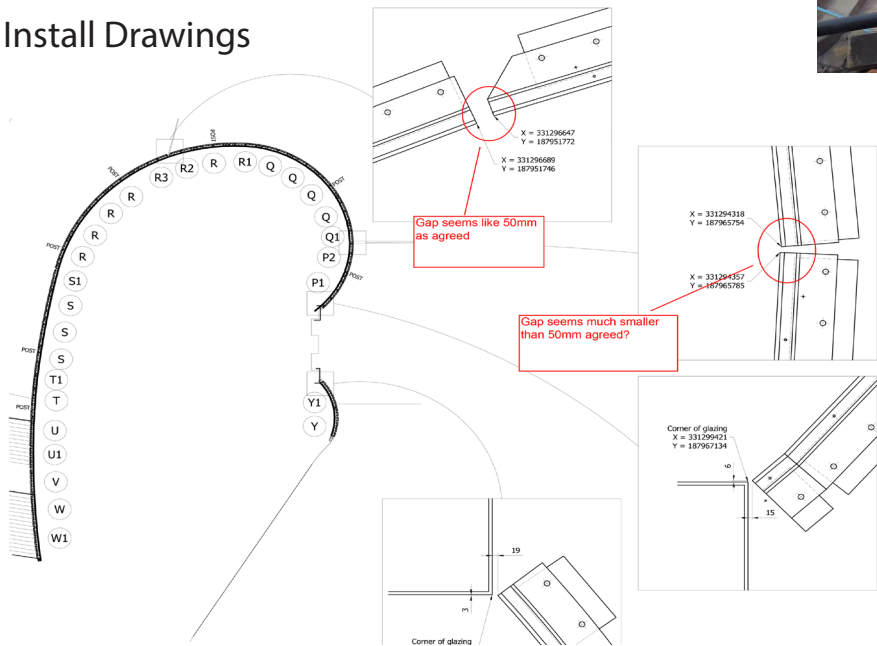
Product: Spectraglass Balustrade
Project: Friars Walk, Newport

Architect: Leslie Jones Architects
Contractor: Bomer & Kirkland

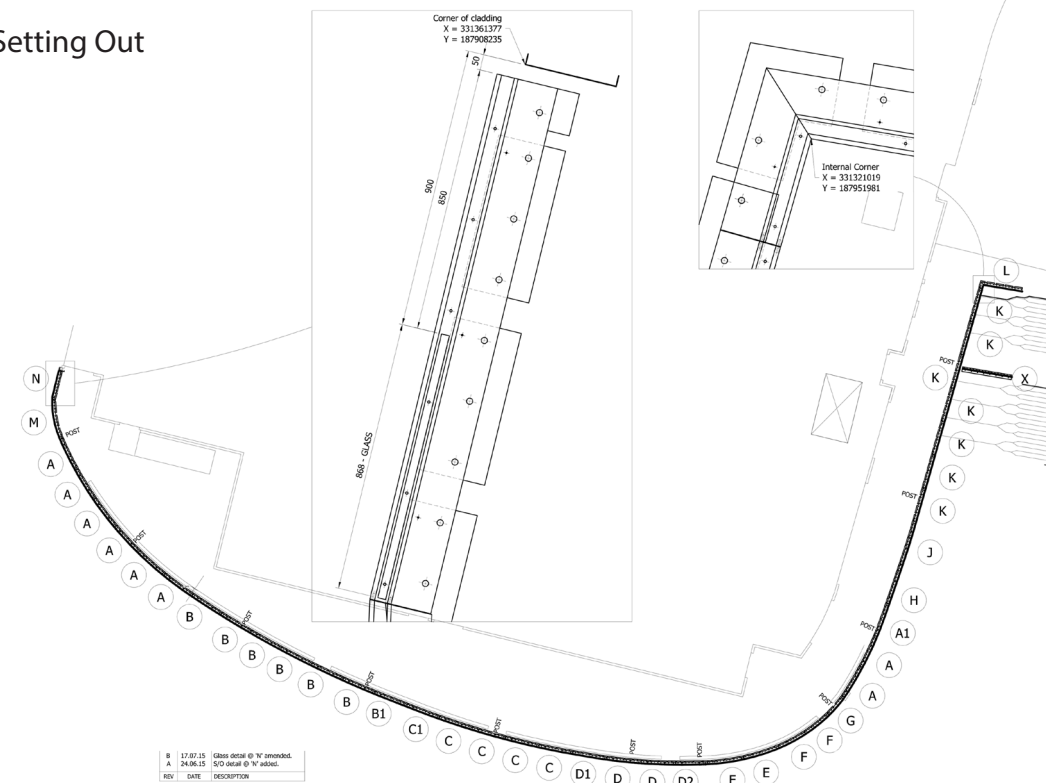
Date Completed: Dec 2015

- Project Description
- 180m of illuminated Balustrade glass panels
 - RGB illuminated housed within handrail
 - continuous linear illumination, including curved glass panels and staircase
 - DMX colour control with IP address for controlling remotely
 - 3KW loading design balustrade for public areas

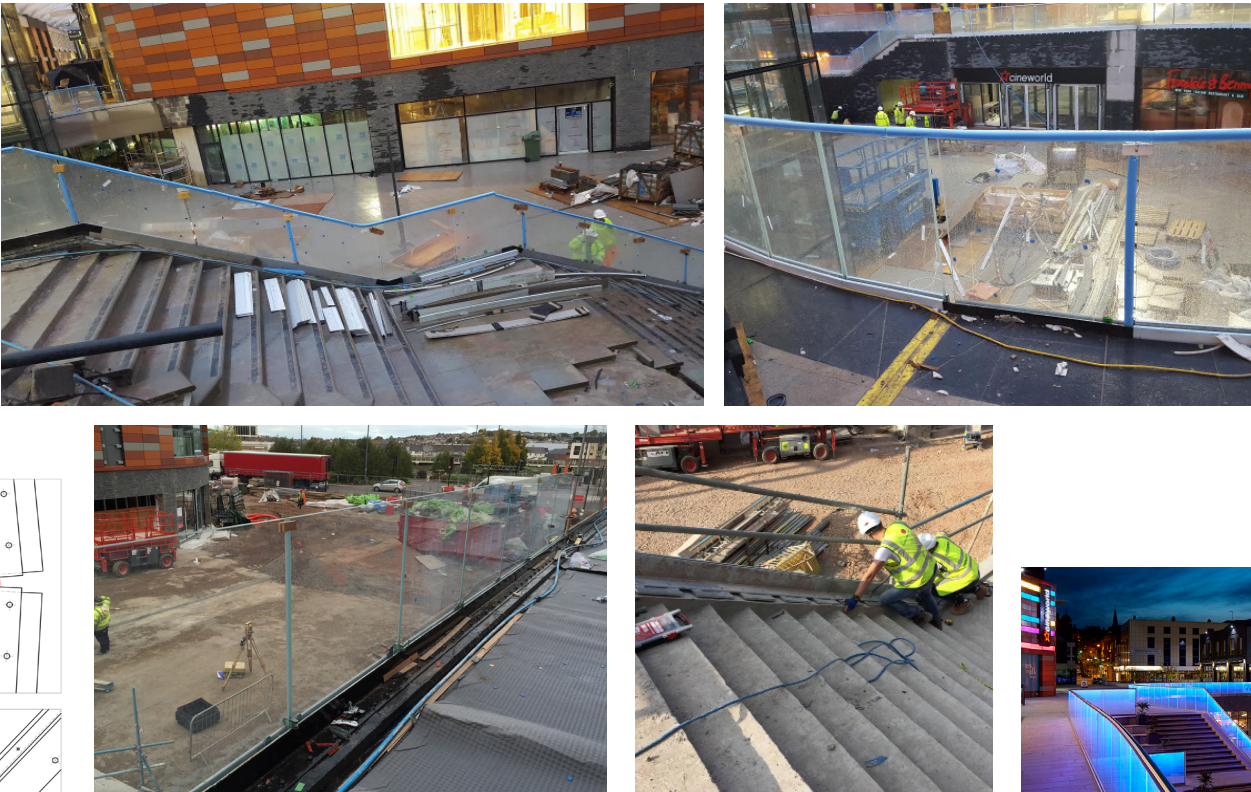
Install Drawings



Setting Out



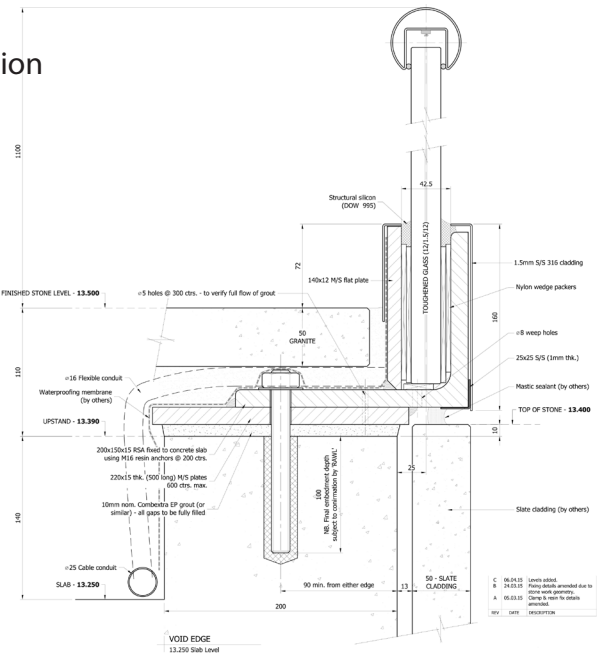
Install photos



Project images



X-Section



Specification
Spectraglass 25.5mm laminate
SPG Interlayer
Height: 1100mm - single edge lit
LED: 14W/m RGB- 24Vdc IP65

The Light Lab
22 Holywell Row
London EC2A 4JB
United Kingdom

+44 (0) 207 278 2678
www.thelightlab.com

Company Reg. No: 4406351
Reg. Office: 22 Holywell Row, London EC2A 4JB

