

Project: Adobe, White Collar Factory  
Product: Bespoke & Glowline - inground

Services:  
Bespoke lighting manufacture  
Specialist lighting installation

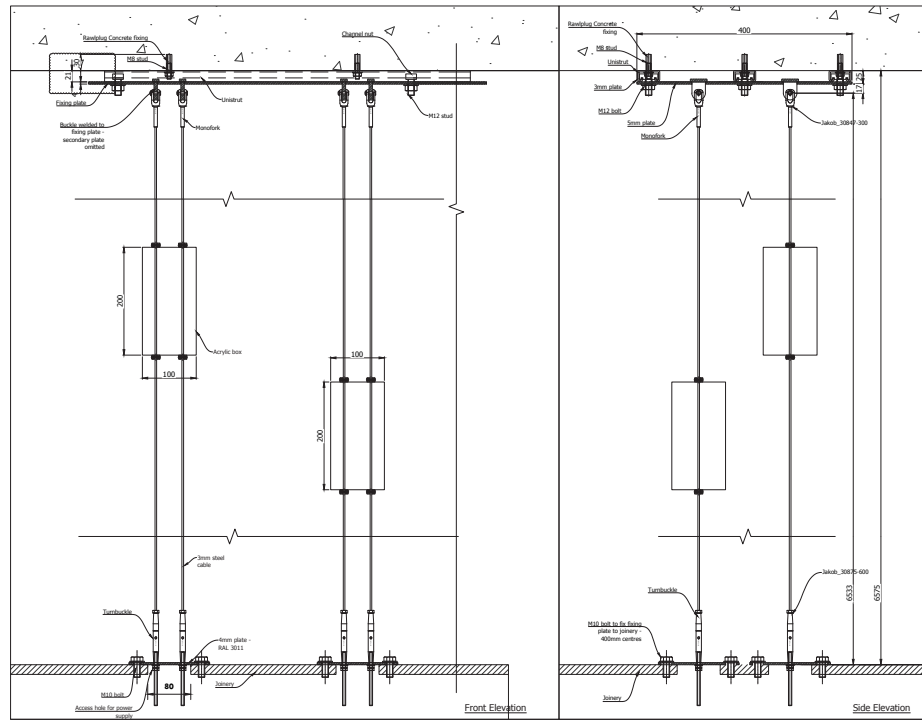
Architect: Ben Adams Architects

Date completed: September 2017

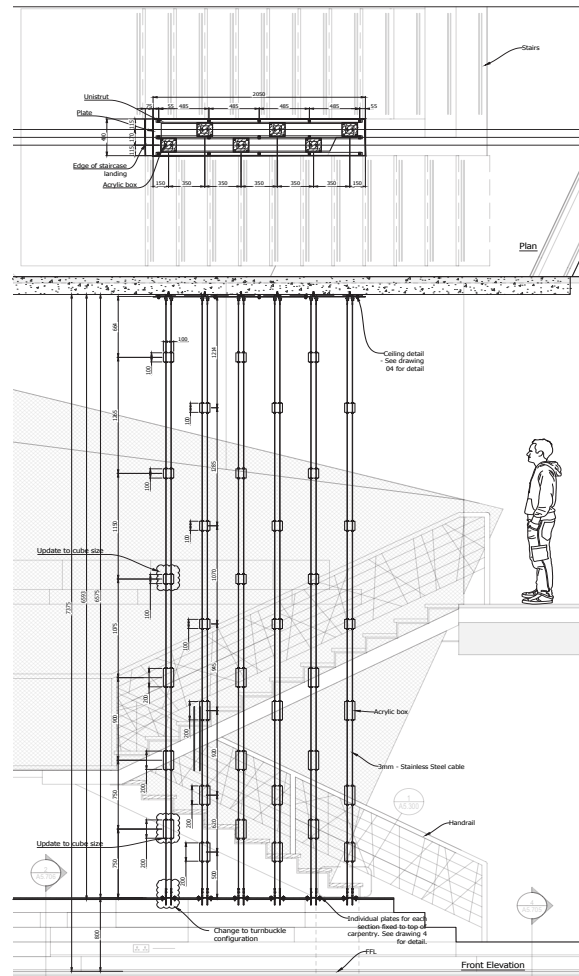
## Project Description

- We contributed bespoke lighting to the Adobe office refit at the new White Collar Factory building in Old Street. Working to initial concept by COMO Group.
- The Light Lab designed, manufactured and installed several elements of bespoke lighting for the new offices.
- The first part of the project was a bespoke lightbox pendant feature, suspended in the centre of the stairwell, connecting the first and second floors of the Adobe office.

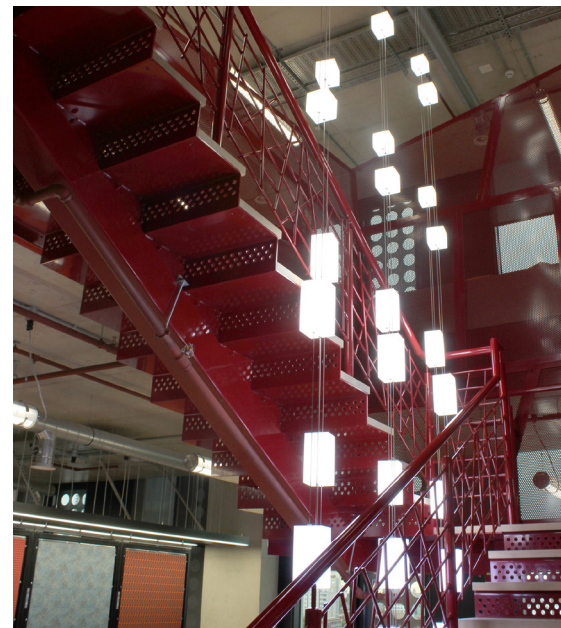
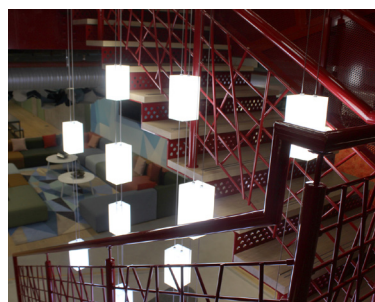
### Connection detail



### Elevation issue



## Project images



The Light Lab  
22 Holywell Row  
London EC2A 4JB  
United Kingdom

+44 (0) 207 278 2678  
@thelightlabltd  
[www.thelightlab.com](http://www.thelightlab.com)

Company Reg. No: 4406351  
Reg. Office: 22 Holywell Row, London EC2A 4JB

**the light lab**  
bright ideas