

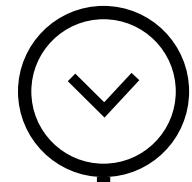
the light lab

Company Profile

the light lab
bright ideas



Credentials



Who We Are

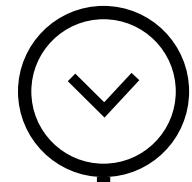
Established in 2002, The Light Lab is a London-based specialist in high-end architectural lighting installations. With over two decades of experience, we bring together expertise in lighting design, technology, manufacturing, and project management to deliver bespoke solutions for complex, design-led spaces.

From initial concept and collaborative design, through to prototyping, in-house manufacturing, and final installation, we take full responsibility for every element, including metalwork, glass, LEDs, and control systems. Our fully integrated process ensures precision, consistency, and exceptional finish.

We're known for tackling technically challenging projects where off-the-shelf solutions fall short, helping architects and designers realise their creative vision without compromise.

With a strong portfolio of work across many of London's landmark buildings, we also have a growing global presence, with projects delivered in the USA, Europe, Canada, UAE, and Australia. As we continue to expand, we remain driven by close collaboration with some of the UK's most talented design teams — and we're excited for what the next decade will bring.





What We Do

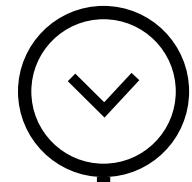
At The Light Lab, we specialise in delivering fully integrated, bespoke lighting solutions—from concept to completion. We thrive on solving the complex challenges that come with one-off installations, where precision and quality are critical from the outset.

Our services span design integration, custom lighting manufacture, specialist installation, and end-to-end project management. We also offer a range of UK-designed and manufactured lighting products, fully customisable to suit individual project needs. All components are produced to the highest standards, ensuring long-term performance and reliability.

We believe lighting should enhance and align with architectural intent, not compromise it. That's why we encourage project-specific solutions, avoiding the limitations of off-the-shelf products.

With full control over quality and delivery, our clients benefit from a single point of contact throughout the process. Whether we're involved from the earliest design stages or brought in later, our flexible, collaborative approach ensures the right result—first time.





From Concept to Completion

Collaboration

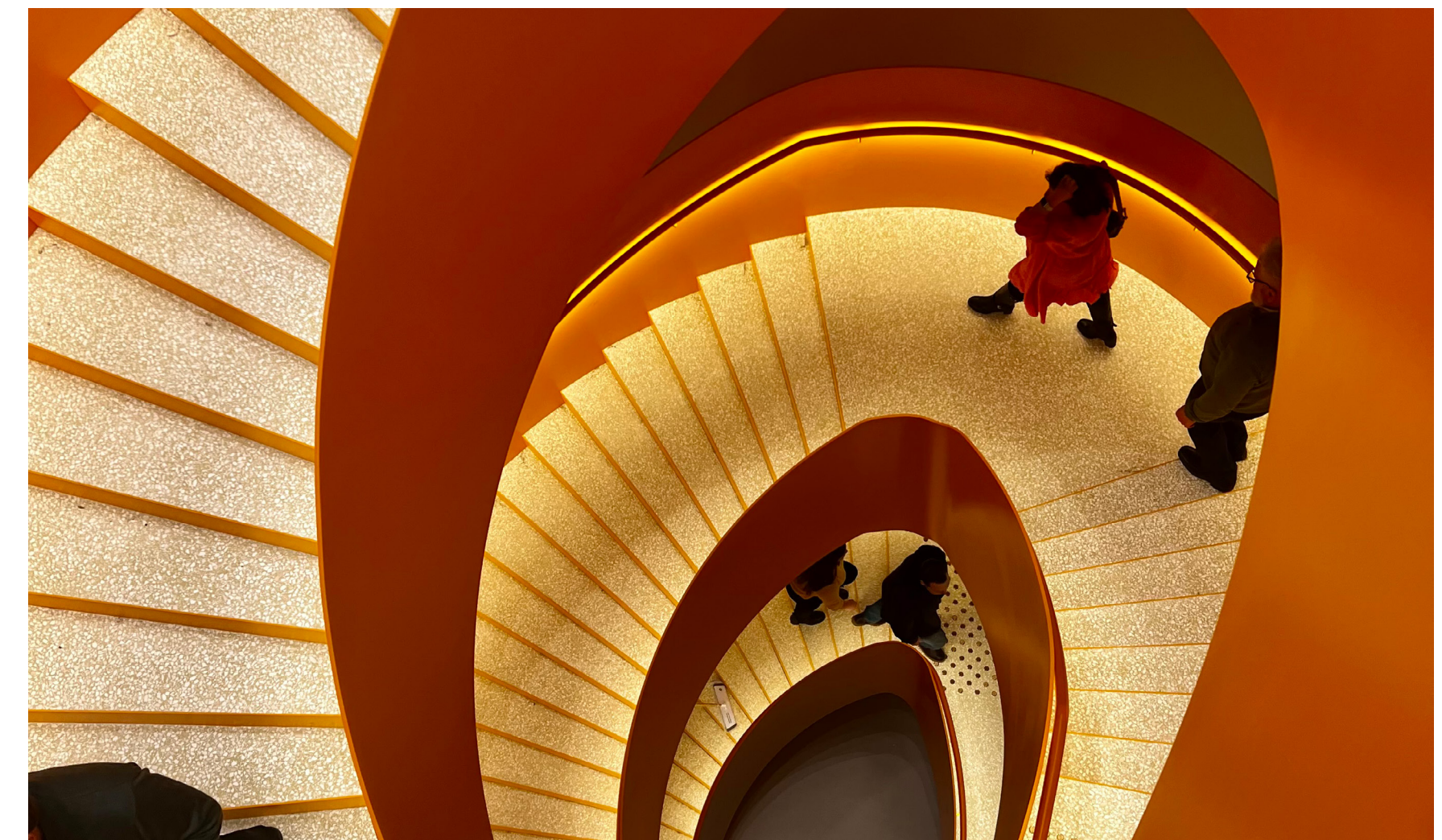
- We provide innovative solutions to realise design concepts, operating across all sectors of architectural lighting. By producing CAD designs and schematics and managing product supply, we ensure design integrity is maintained. Throughout the process, we work closely with all project stakeholders, supporting them every step of the way to meet the client's brief. Understanding the importance of managing expectations with bespoke manufacture, we often bring initial ideas to life through design mock-ups before committing to full-scale production and installation.

Fabrication

- The Light Lab specialises in all aspects of lighting manufacturing and fabrication, producing high-quality, fully bespoke lighting solutions in the UK. All fabrication takes place in our workshops, with in-house metalworking handled across two locations. This enables us to oversee every detail of the design, ensuring full control over quality, durability, and design integrity. By managing the entire production process, we use premium materials and guarantee reliable, long-lasting results. We also collaborate closely with consultant engineers to meet the highest structural and electrical standards, providing lighting schematics, product specifications, and full RAMS and O&M documentation as part of our delivery.

Installation

- We provide a skilled team of trained engineers for all glass, metal, and electrical elements, offering expert project management support throughout the entire process. The crucial final stage of delivery is when the project concept comes to life, with our experienced installation team ensuring the highest quality standards are maintained. Whether working independently or alongside other trades, our team brings the vision to life, ensuring every detail is executed to perfection.





Case Studies



Penn Station, New York City

Bespoke Spectraglass Fin Ceiling

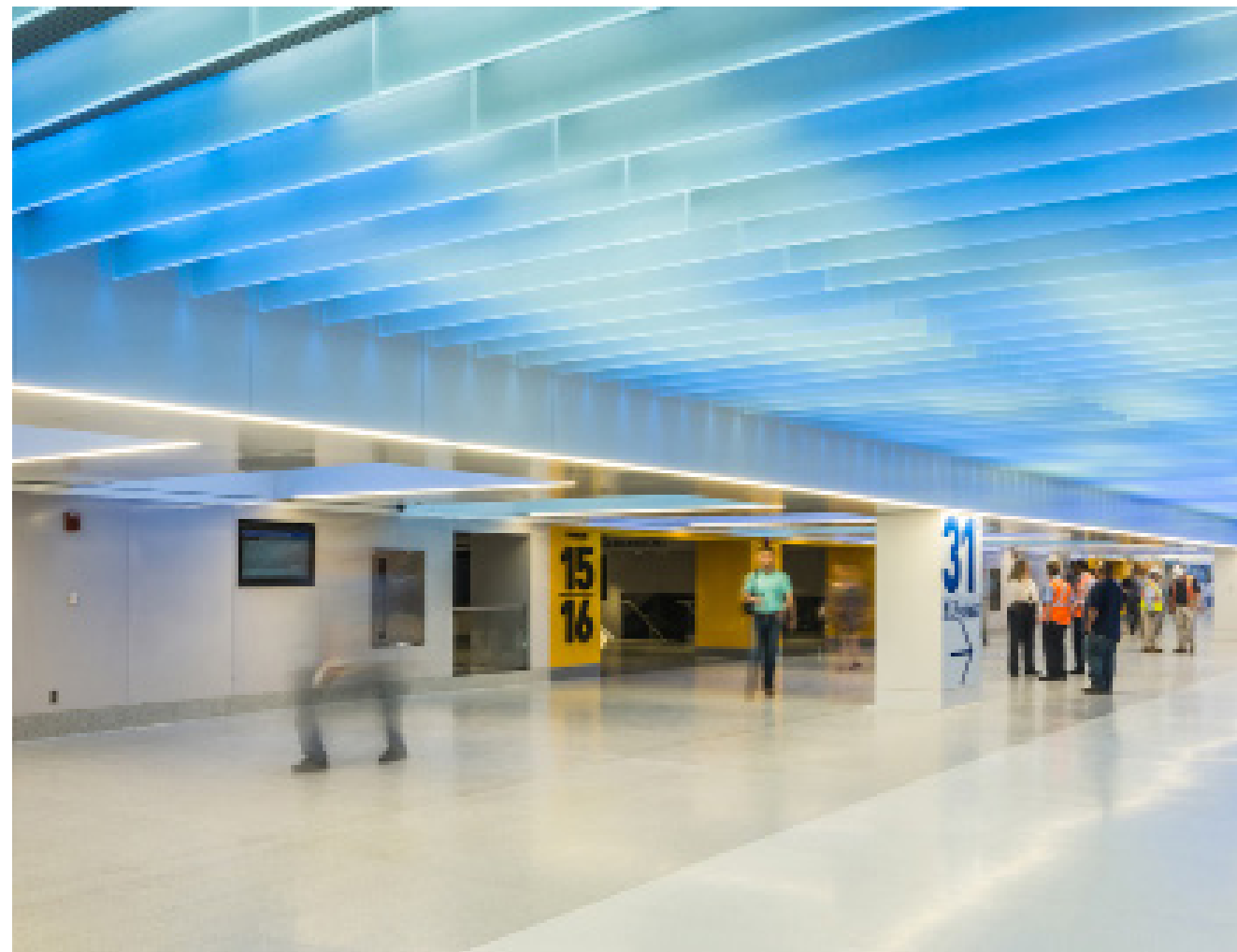


Architect	Skidmore, Owings & Merrill LLP (SOM)
Lighting Contractor	The Light Lab
Products	Spectraglass
Services	Specialist lighting manufacture & installation
Industry	Transport

Skyscape is a bespoke light art installation covering the ceiling of the new west end concourse at Moynihan Train Hall, Penn Station, NYC. Designed by Skidmore, Owings & Merrill (SOM) for the Moynihan Station Development Corporation, The Light Lab fabricated a bespoke Spectraglass fin ceiling with digital content by light artists miriamandtom.

[View here.](#)

The project contractor Skanska & electrical contractor Welsbach, commissioned The Light Lab to work on the design and build of this ‘digital sky’, using their bespoke edge lit glass product Spectraglass. The Light Lab designed & manufactured an easy-fit support structure and LED glass fins to fill the expanse of the 15’x300’ ft ceiling. The brief included making all the services above the fins easily accessible, so the design mounted the fins on easy slide carriages on precision rails.



The 2,000 pixels of RGBW LED light, softened through the glass, gives a gentle, calming sense of space in an otherwise confined and overcrowded space and has been very well received by the harassed commuters, as they wait for the full redevelopment of the station. They called on the services of Studio miriamandtom to create 'Skyscape', an animated and voluminous sky scene that drifts across the ceiling, whose deft touch gives the piece its true class.



London College of Fashion

Glowrail - Timber Finish



Architect

Lightng Design

Products

Services

Industry

Allies & Morrison

Buro Happold

Glowrail - Timber Finish

Specialist lighting manufacture & installation

Education

The Light Lab contributed bespoke lighting to the relocation of London College of Fashion, University of the Arts London, to its state-of-the-art, purpose built site at Queen Elizabeth Olympic Park on the Stratford Waterfront. Allies and Morrison & Buro Happold specified our expertise to fabricate our bespoke LED handrail fitting ‘Glowrail’ in a custom timber finish, spanning 15 stories throughout the new building.

[View here.](#)

One such solution was the ‘Heart Wall,’ a concrete frame comprising columns and beams that establishes a boundary between the central core and surrounding workshop spaces.

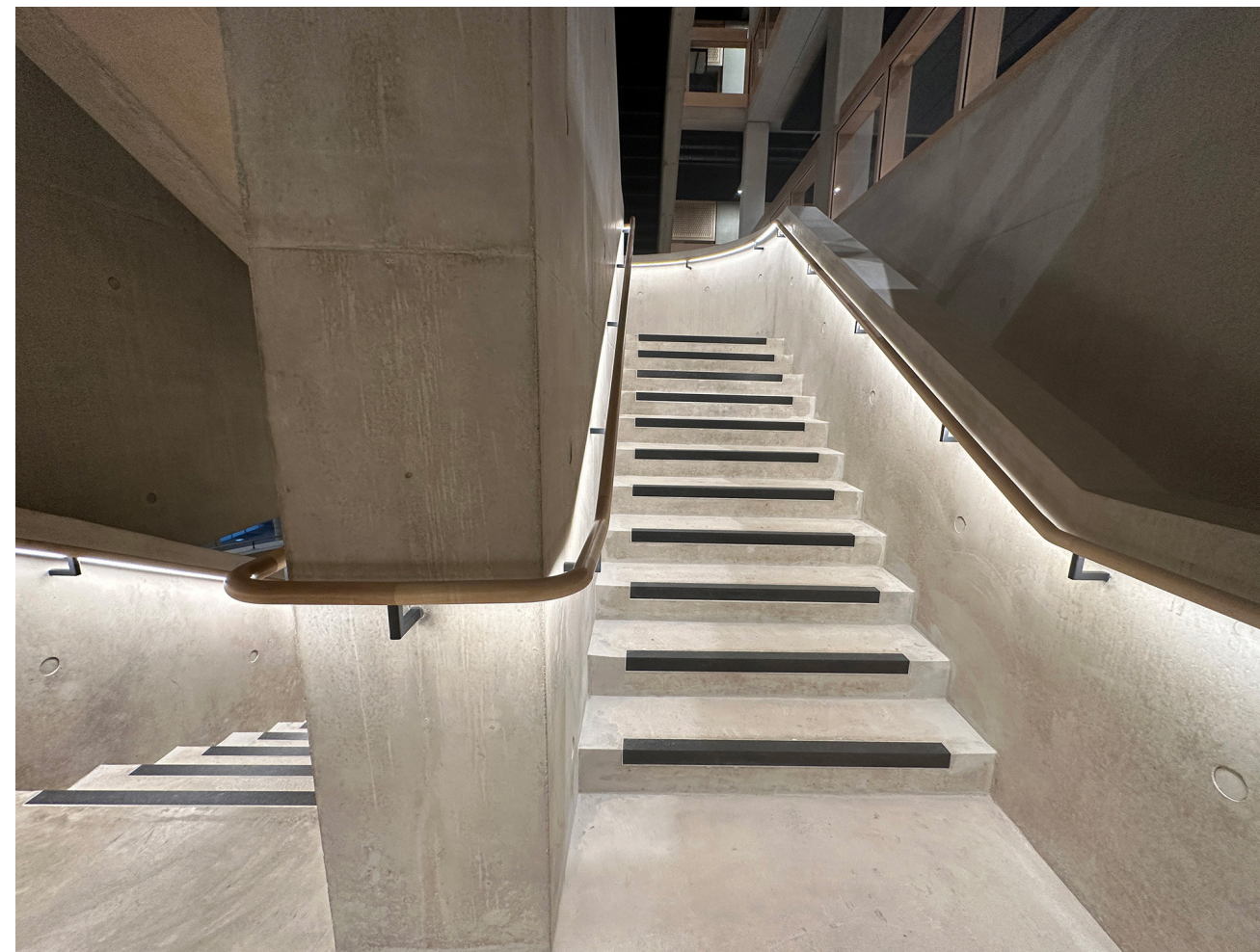
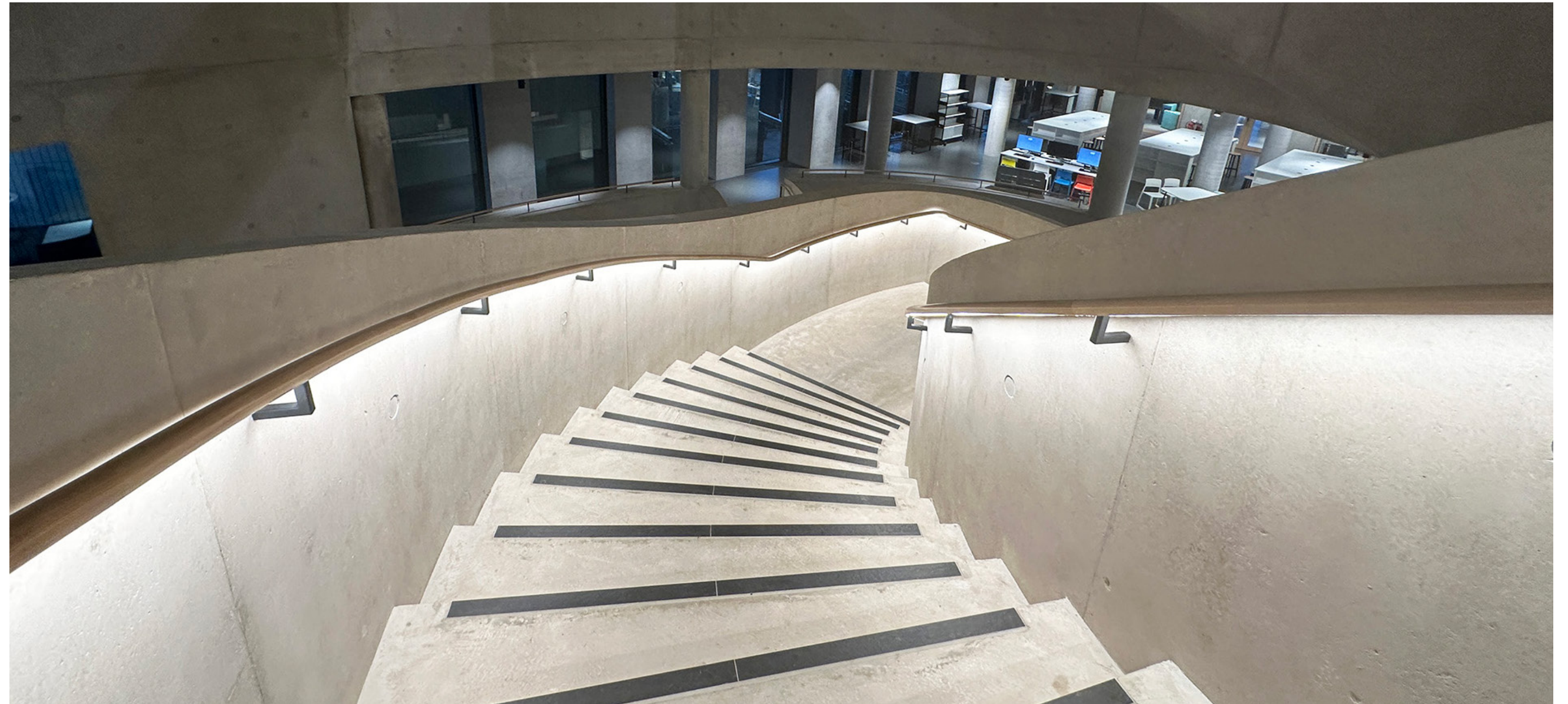
This structure provides primary stability while retaining flexibility in space utilization and service provision.

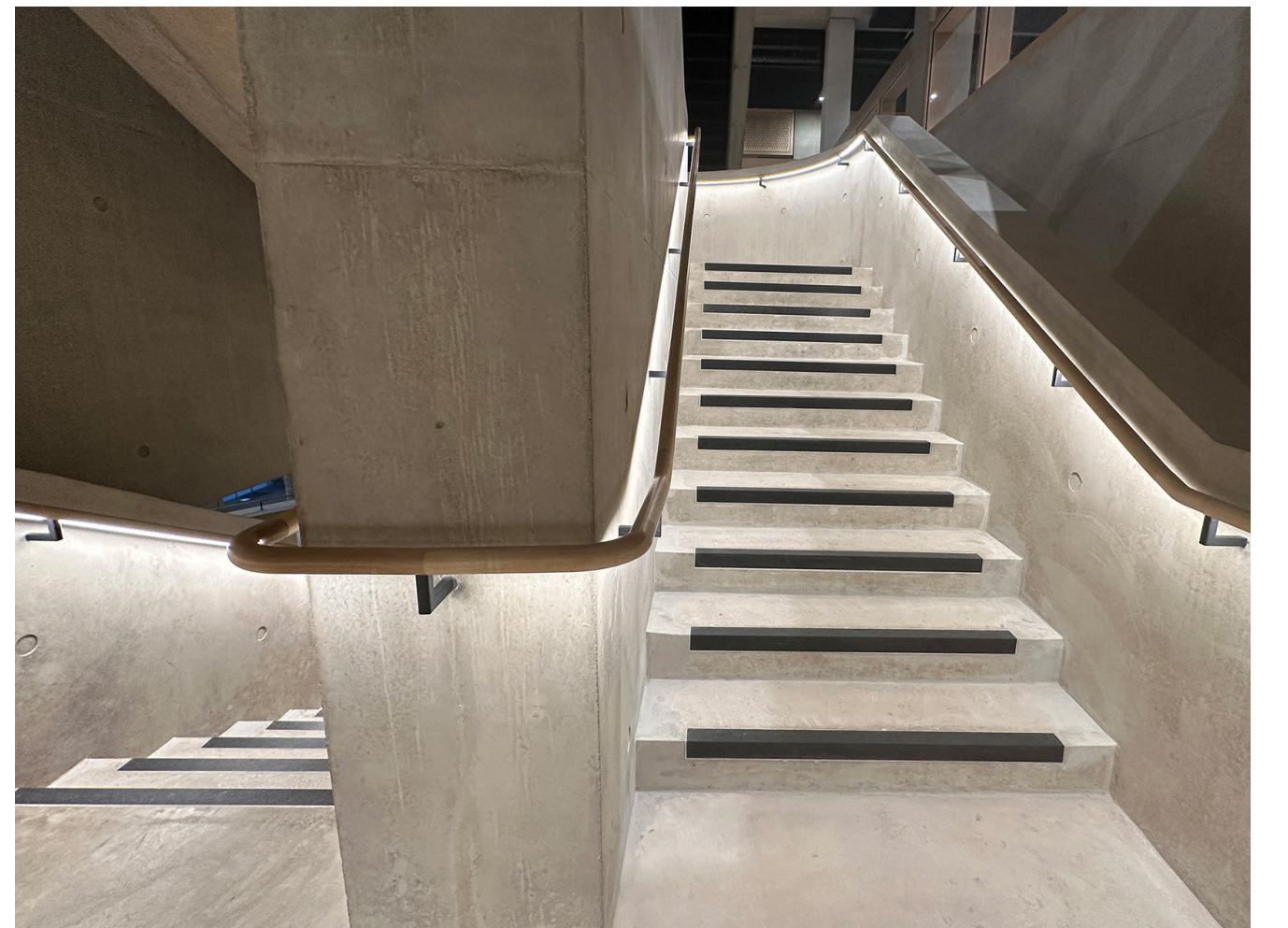
Internally, Buro Happold’s structural team devised innovative solutions for the complex spaces radiating from the central atrium and circulation space, known as the ‘Heart’. One such solution was the ‘Heart Wall,’ a concrete frame comprising columns and beams that establishes a boundary between the central core and surrounding workshop spaces.

This structure provides primary stability while retaining flexibility in space utilization and service provision.

Our specialist team manufactured and installed over 430m of custom timber LED handrail, incorporating helical, curved, and straight sections, seamlessly integrating with the sweeping concrete 'heart wall' stair and adjoining black steel staircases; wall mounted with custom black powder coated steel brackets.

Mastering an unfinished surface presents a unique design challenge, as production director Marcus Cave describes how 'fixing to a concrete surface demands complete precision, as there's no room for touch-ups. To address this, our team devised a bespoke fixing method, which involved casting a spigot into pre-drilled holes in the concrete and attaching our bracket directly — so accuracy was key! The team did a fantastic job, delivering this perfectly on a hugely impressive build. Sincere thanks to Buro Happold for the opportunity with our Glowrail product.'







PoMo, Trondheim

Glowrail - Powdercoated Finish



Architect
Products
Service
Industry

India Mahdavi & Eric Langdalen
Glowrail - Powdercoat Finish
Specialist lighting manufacture & installation
Leisure



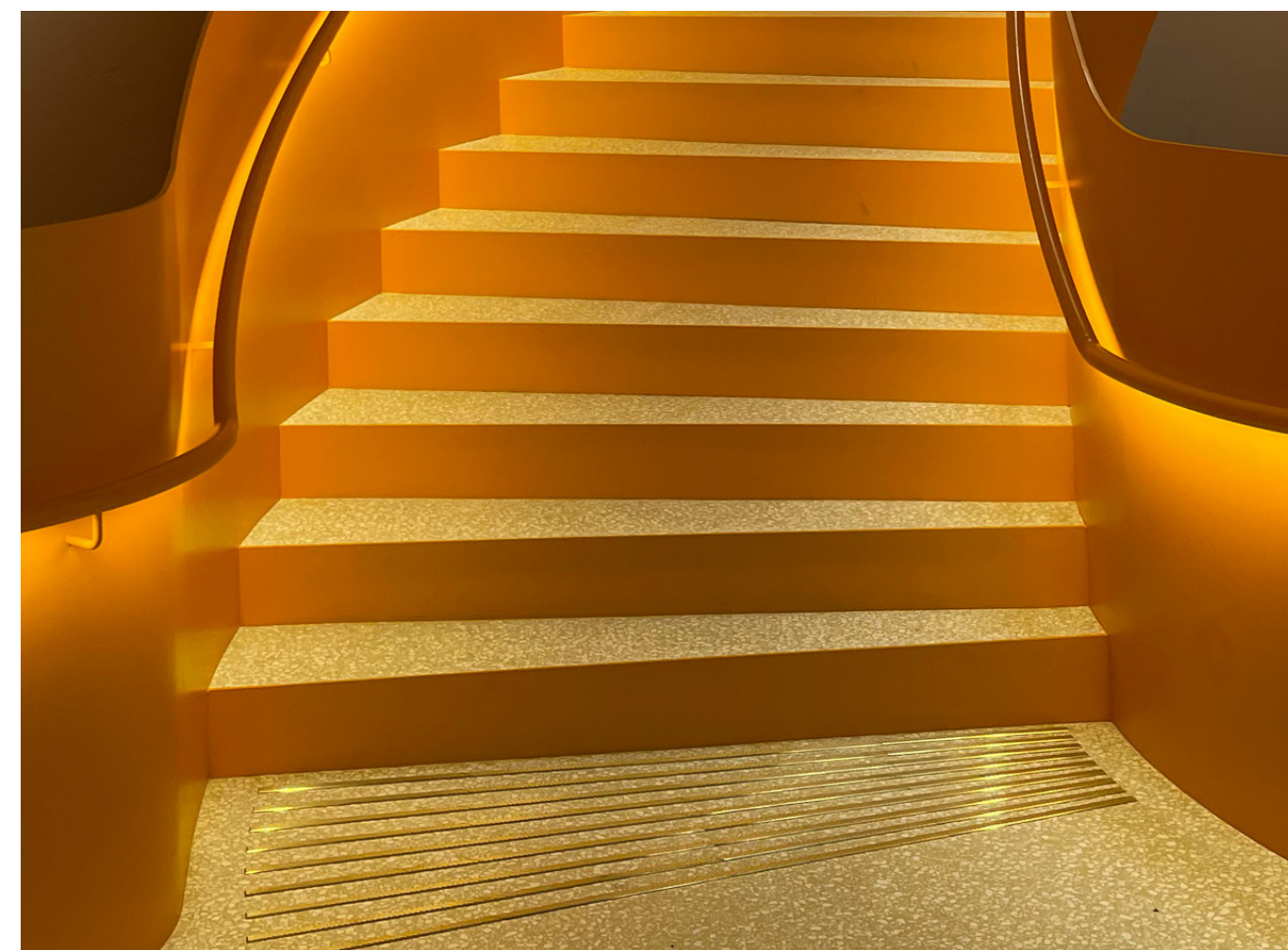
PoMo, Trondheim's new museum for modern and contemporary art, recently opened in February 2025, quickly establishing itself as one of the most exciting cultural events in recent years. Housed in a beautifully restored historic building, with bold interiors by India Mahdavi and Erik Langdalen, it is a wonderful addition to Norway's cultural landscape.

At the heart of the museum is a striking central helical staircase, a standout architectural feature enhanced by The Light Lab's custom Glowrail LED handrail. Designed in a bold powder-coated orange to match the stairwell's steel walls, the Glowrail integrates seamlessly with the space's industrial aesthetic—both lighting the way and elevating the design. Commissioned by Trondheim Stål AS in collaboration with Skanska Norway, the project also benefited from our full installation service. Our skilled team travelled to site to carry out the installation, ensuring precise execution and maintaining full control over quality and finish—guaranteeing the highest standard of delivery.

The stair's complex compound radii posed a unique technical challenge—well beyond a standard helical form. Our team delivered a fully bespoke solution, combining precision planning, custom fabrication, and adaptable mounting to ensure the Glowrail™ LED handrail followed the intricate curves seamlessly, with continuous, even illumination throughout.

From first-fix bracket installation into 11mm steel to detailed site surveys, every stage was carefully planned for accuracy and efficiency. We also developed bespoke, powder-coated brackets with a minimalist finish, eliminating cover plates and enhancing the crisp, contemporary aesthetic.

The result: a seamless, sculptural line of light that enhances the staircase both functionally and architecturally. This project reflects The Light Lab's commitment to design excellence—uniting technical precision, custom engineering, and flawless global delivery.







Volume 0.1, Union Manchester

Bespoke Digital Artwork



Architect
Interior Design
Lighting Design
Products
Services
Industry

Depton Corker Marshall
Vita
Artin.
Bespoke
Specialist lighting design, manufacture & installation
Hospitality & Leisure

Union Manchester is a next-generation co-living space located in the vibrant St John's Development. At its heart is Volume 0.1, a digital artwork designed by Artin., inspired by visualising sound—a tribute to Manchester's rich music heritage. This captivating installation features twelve 2 metre high glass entities that seem to levitate in the entrance void, creating a powerful visual statement.

Designed in harmony with bespoke lighting solutions throughout the building, Volume 0.1 seamlessly integrates with the interior lighting design, enhancing the atmosphere of the amenity spaces while maintaining a cohesive aesthetic.

The Light Lab were brought on as specialist contractors to develop, fabricate and install the unique pendants, which feature custom linear SPI pixel LED and bespoke LED ring PCBs, all with RGBW chips. The feature uses over 18,000 channels of control, via Madrix hardware and software, enabling the balanced and seamless realisation of Artin's beautiful visual content.





Bobby Moore Bridge, Wembley

Bespoke Public Realm Lighting



Architect

Dixon Jones

Lighting Design

Speirs Major

Products

Bespoke

Services

Bespoke design & build main contractor

Industry

Public Realm

Property developers Quintain have launched the refurbished Bobby Moore Bridge pedestrian underpass at Wembley Park; a project which saw The Light Lab take on full management, fabrication and installation responsibilities, as bespoke design and build main contractor.

Initial concept for the project came from the team at Dixon Jones Architects, with lighting design by Speirs Major and light art by miramandtom. [View Here](#)

Edward Jones from Dixon Jones Architect describes how their design concept was to transform Bobby Moore Bridge from a neglected and routine piece of civil engineering into a ‘glittering Proscenium leading to the wonders of Wembley.’

“For those arriving at Wembley Park Station a first impression is of the great vista seen in perspective above the BMB leading via the lighting columns of Olympic Way to the Colossus of the Stadium beyond. Then having navigated the steps down to concourse level the bridge acts as a threshold. The dramatic lighting of its enclosing walls and ceiling prepare visitors for the spectacle of the forthcoming sporting event as well as finding a place for the recovered tiled mural, unveiled by Mrs Moore in honour of her husband in 1993, from which the bridge takes its name.”



Bobby Moore Bridge

In addition to site managing the whole project, The Light Lab designed and manufactured the bespoke fittings, also fabricating a new ceiling, wall glazing and supporting metalwork; leading a team of specialist installers to complete the 14 week schedule.

[View timelapse video of the construction.](#)

SPI individually controlled multi-led pixels provide the wall lighting behind acid etched, toughened laminated glass with a sentryglass interlayer – ensuring a safe and robust cladding and a calming environment, in an area subject to post-match crowding as fans queue to get into the station.

Within the ceiling Glowline, linear LEDs also SPI controlled, link the two walls - completing the “crossover” effect.

In addition, a section of the heritage tiles have been renovated and illuminated in the centre of the East wall, to celebrate the history of Wembley and Bobby Moore – the plaque in dedication to him being the centre piece.

Emergency back-up, bespoke recessed downlights, provide ambient lighting to the area.

“

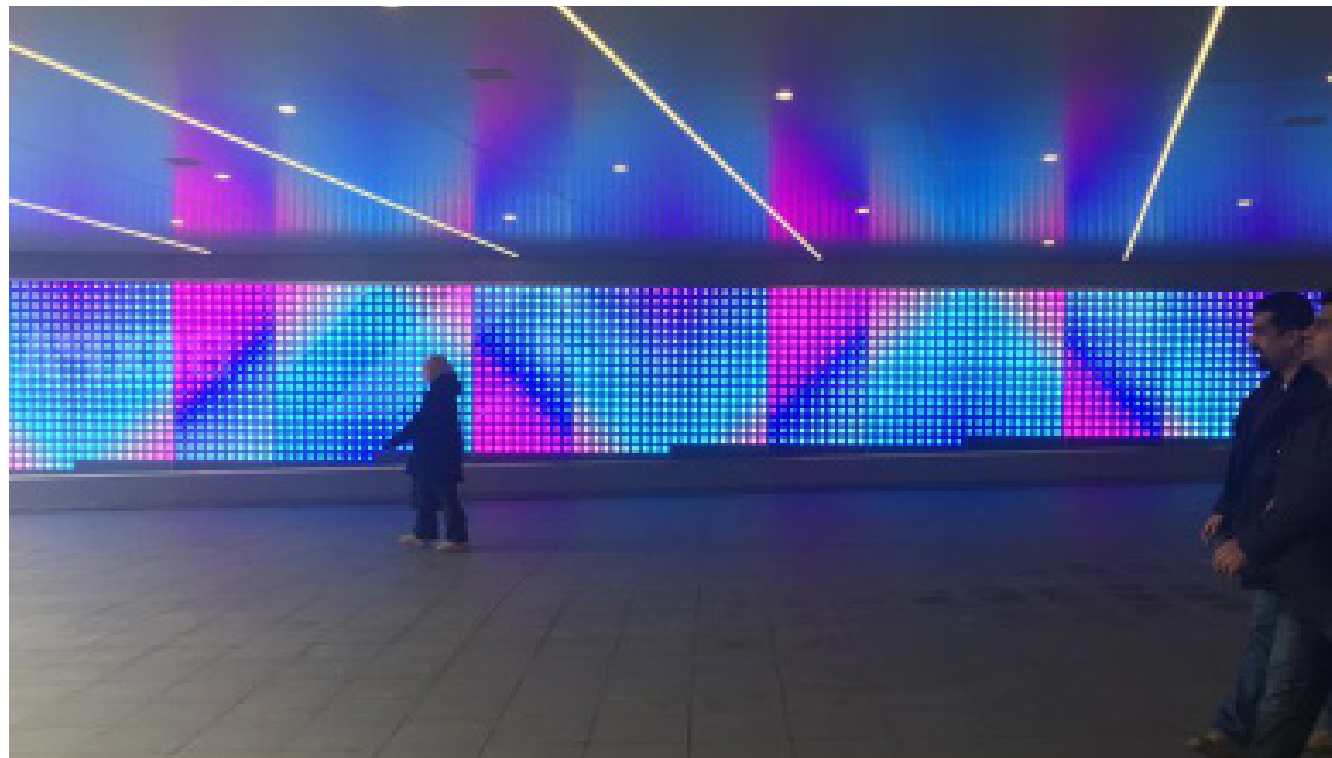
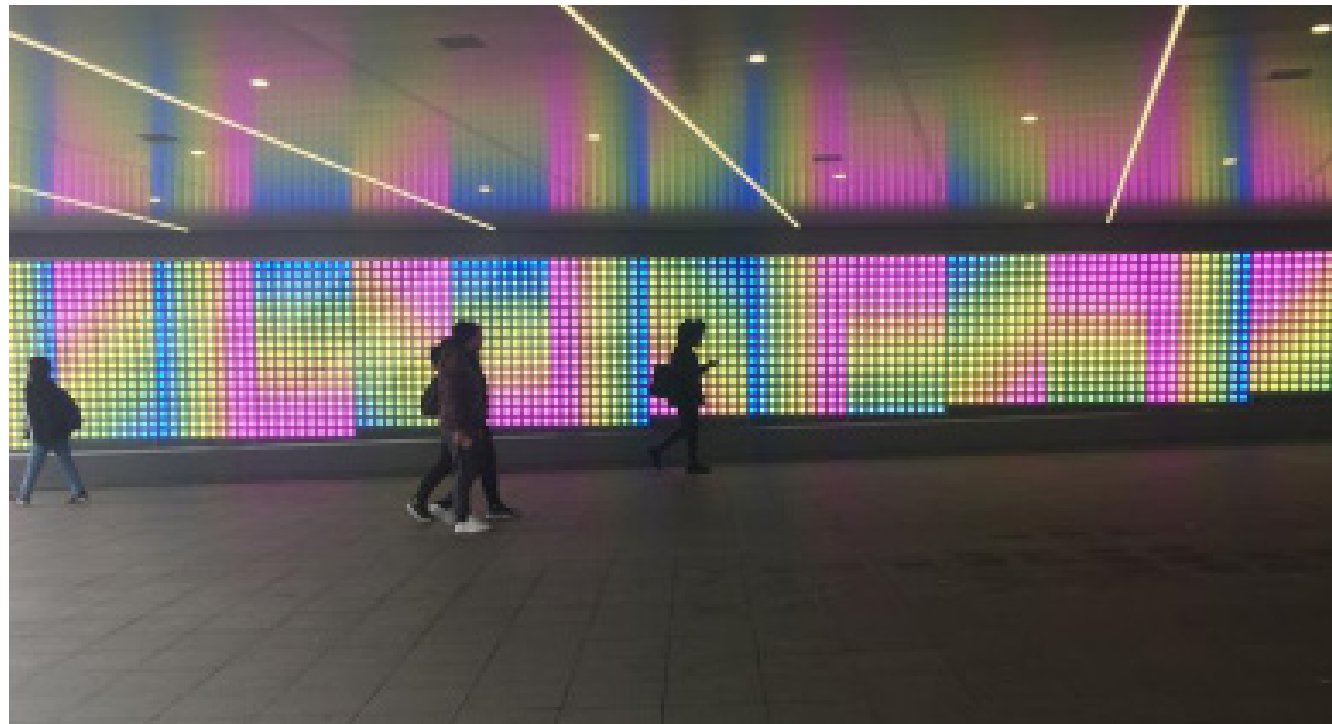
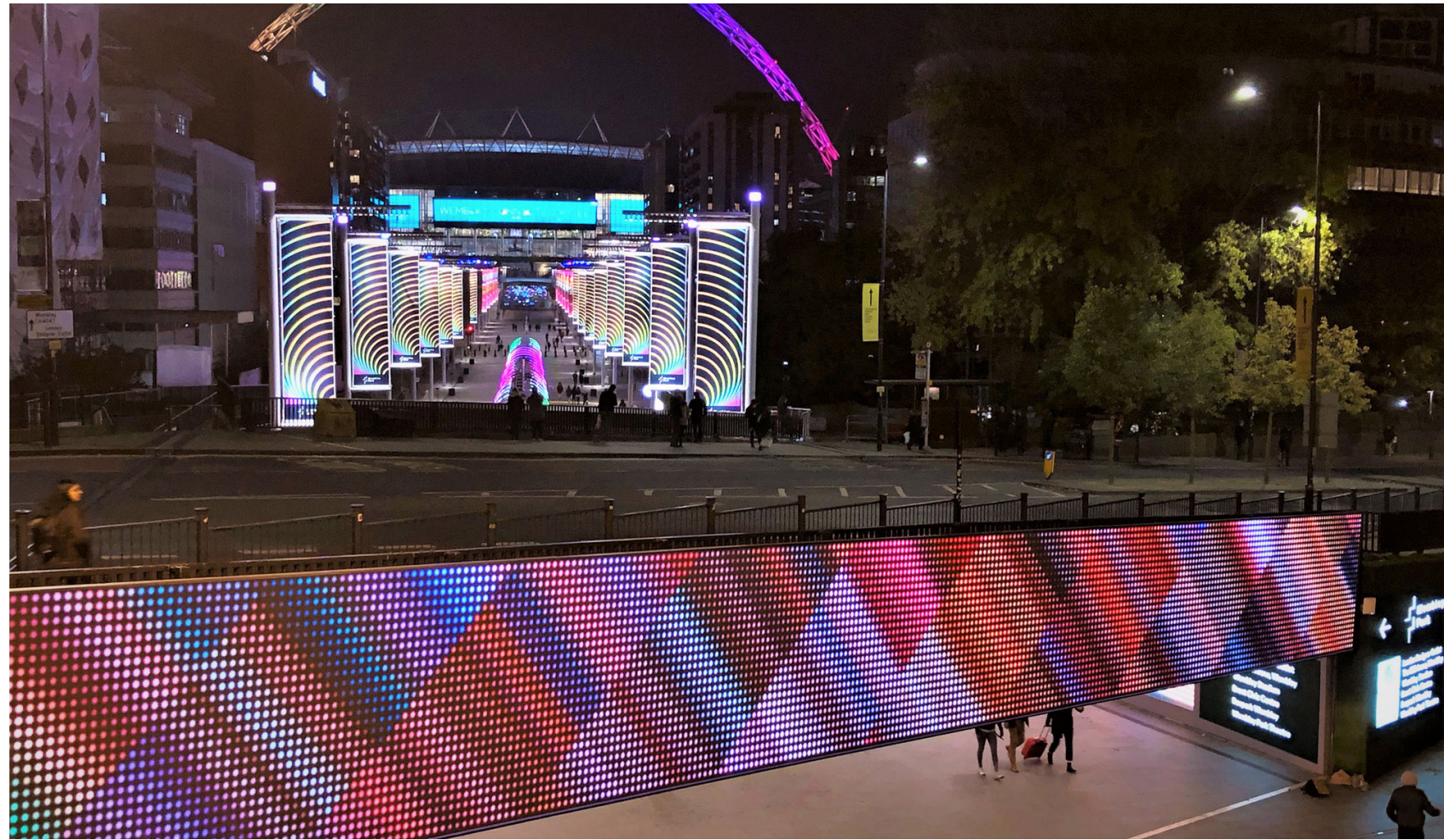
The first of the artistic installations has been commissioned from architectural design collective, miriamandtom.

Entitled Crossover, the work reflects the complex makeup of the community that live and pass through Wembley Park every day. Crossover takes its palette from the surrounding area and the bands of colour have been arranged in deliberately angular contrast to the dynamic appearance of the architecture. As light artist Tom Sloane describes;

“Having the opportunity to bring an element of celebration that’s deeply rooted in the surrounding community to people’s daily routine while simultaneously having the chance to design an artwork that will be many people’s first impression of Wembley Park was a great commission to take on. We hope people feel that Crossover will enhance not only the Bobby Moore Bridge, but their regular interaction with the space in positive ways.”

The Bobby Moore Bridge is both a marker of arrival and departure at Wembley Park and Crossover will bring a daily sense of celebration to the residents of Wembley Park, visitors to the area, and the steady crossover of people and events that the bridge is witness to.

”





UCLan

Custom Exterior Lighting



Architect
Lighting Design
Products
Services
Industry

Hawkins Brown
Jason Bruges Studio
Glowline Inground - GL50
Specialist lighting manufacture & installation
Education

The University of Central Lancashire (UCLan) has undergone a £200 million transformative Campus Masterplan, featuring a £60 million Student Centre and University Square, which serve as the focal point of the vibrant Preston Campus.

The new Student Centre is a key element of the transformation, with the courtyard providing a vibrant hub for students and staff, designed with greenery, seating areas, and art installations. It encourages relaxation and social engagement, providing a refreshing outdoor space amid the hustle of campus life. [View here.](#)

The new Student Centre is a key element of the transformation, with the courtyard providing a vibrant hub for students and staff, designed with greenery, seating areas, and art installations. It encourages relaxation and social engagement, providing a refreshing outdoor space amid the hustle of campus life.

Architects Hawkins Brown led the campus transformation with fresh and contemporary design inspired by Preston's textile heritage and future in aerospace & electronics.

A key feature is the illuminated "light threads," designed by Jason Bruges Studio, to reference delicate strands of cotton. The Light Lab developed the 'light threads', fabricating custom Glowline Inground fittings, with digital content by Jason Bruges Studio. These motion-sensitive lights, embedded in the stone paving of University Square, create a striking path that extends into the Student Centre.

The Light Lab manufactured these 300+ 'light threads' by developing a custom version of the Glowline Inground-GL50.

Each 1m fitting, though using a single-color white LED, featured 10 individually controllable pixels; affording Jason Bruges Studio a large scope for their digital content culminating in the interesting, dynamic and varied animations that play out across the site, giving motion and form to the path of the threads.

Additionally, each Glowline fitting was self-addressing, streamlining installation by making it possible to link up to 25 fittings and utilising a small number of driver locations, minimising cabling and simplifying the setup across the site.





David Oluwale Memorial Bridge

Bespoke Public Realm Lighting



Engineer

Bam Nuttall

Lighting Contractor

The Light Lab

Products

Spectraglass

Services

Bespoke lighting manufacture & installation

Industry

Public Realm

The Light Lab fabricated and installed bespoke Spectraglass panels to the David Oluwale Memorial Bridge; a striking new structure across the River Aire in Leeds. The project is a partnership between the David Oluwale Memorial Association (DOMA) and Leeds City Council. [View here.](#)

Our specialist team were brought onboard by BAM Nuttall & Mott Macdonald, to manufacture and install the bespoke low iron, toughened Spectraglass panels, with SGP laminate structure inter-layer. The bridge is approximately 28 metres long, with each of the 16 panels measuring 1.5m; making it one of our largest external Spectraglass projects to date.

Each of the 16 Spectraglass panels feature a bespoke screen print design, to create the desired design intent of an owl flying across the bridge. This is achieved by using high output SPI LEDs, controllable at 125mm increments to create the movement of the light and therefore the flight of the owl, with all programming by Architainment.





Kings Cross Tunnel

Bespoke LED Integrated Art Wall



Architect
Lighting Design
Products
Services
Industry

Allies & Morrison
Speirs Major
Bespoke back lit glass panels
Specialist lighting manufacture & installation
Public Realm / Leisure

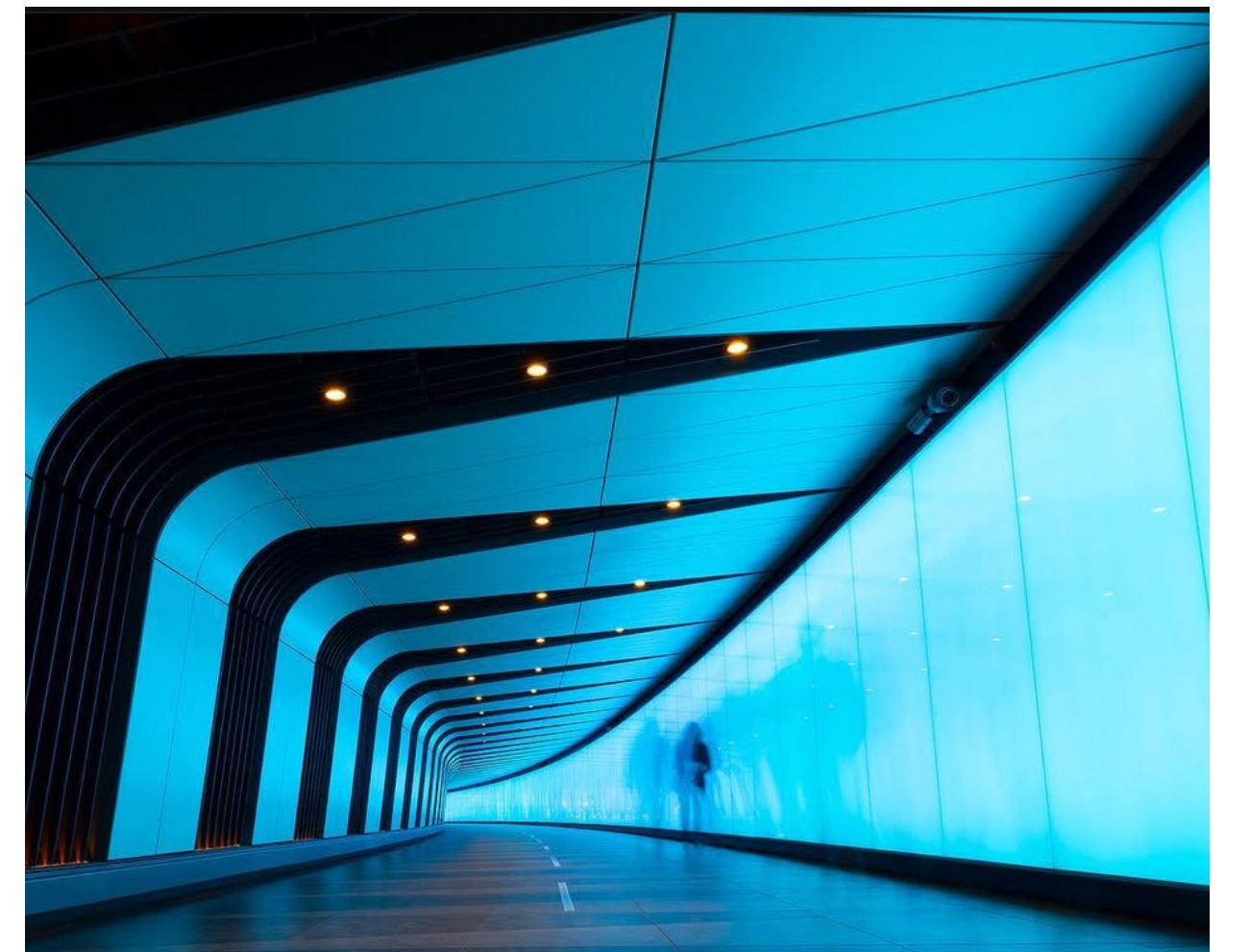
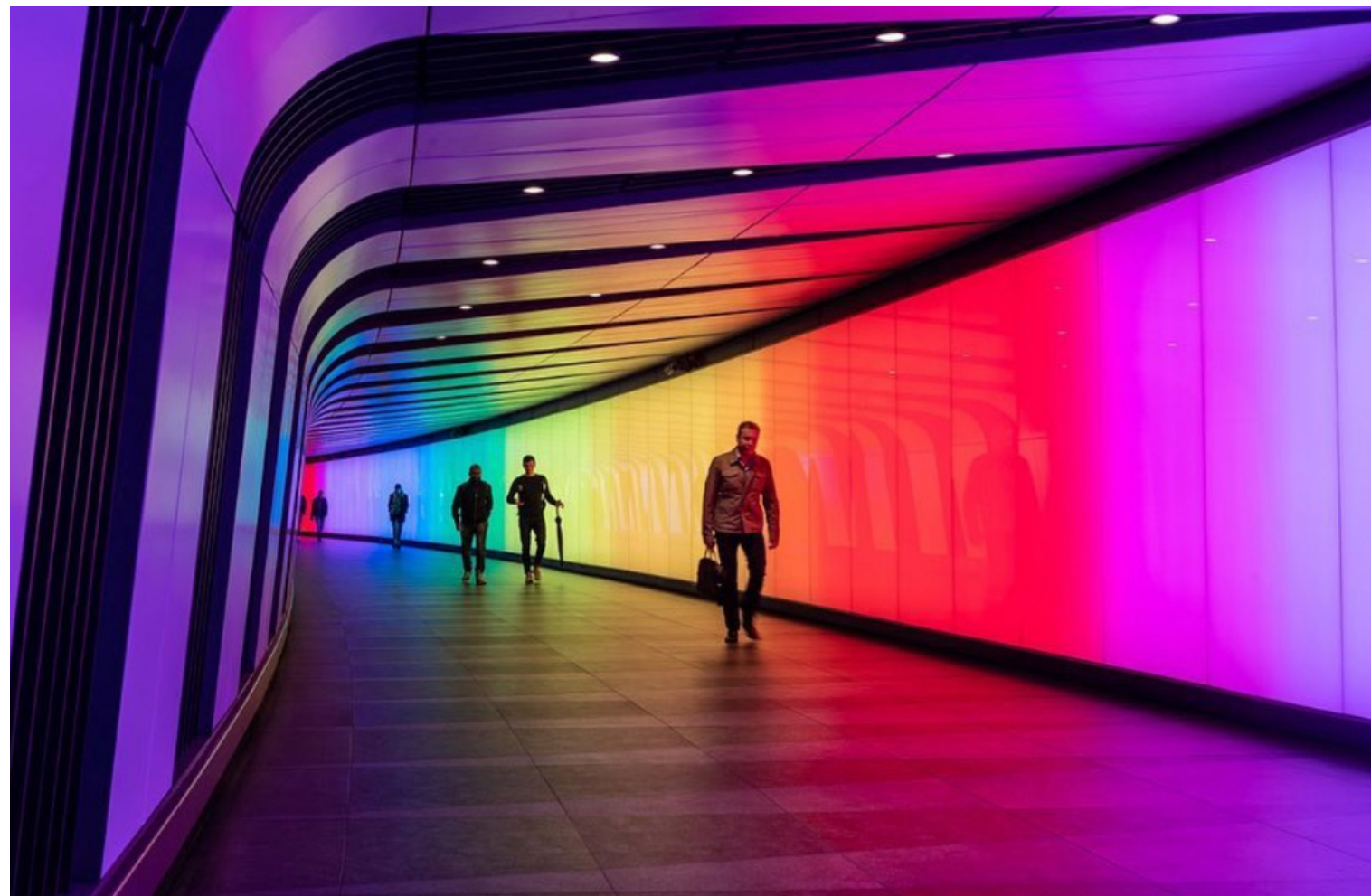
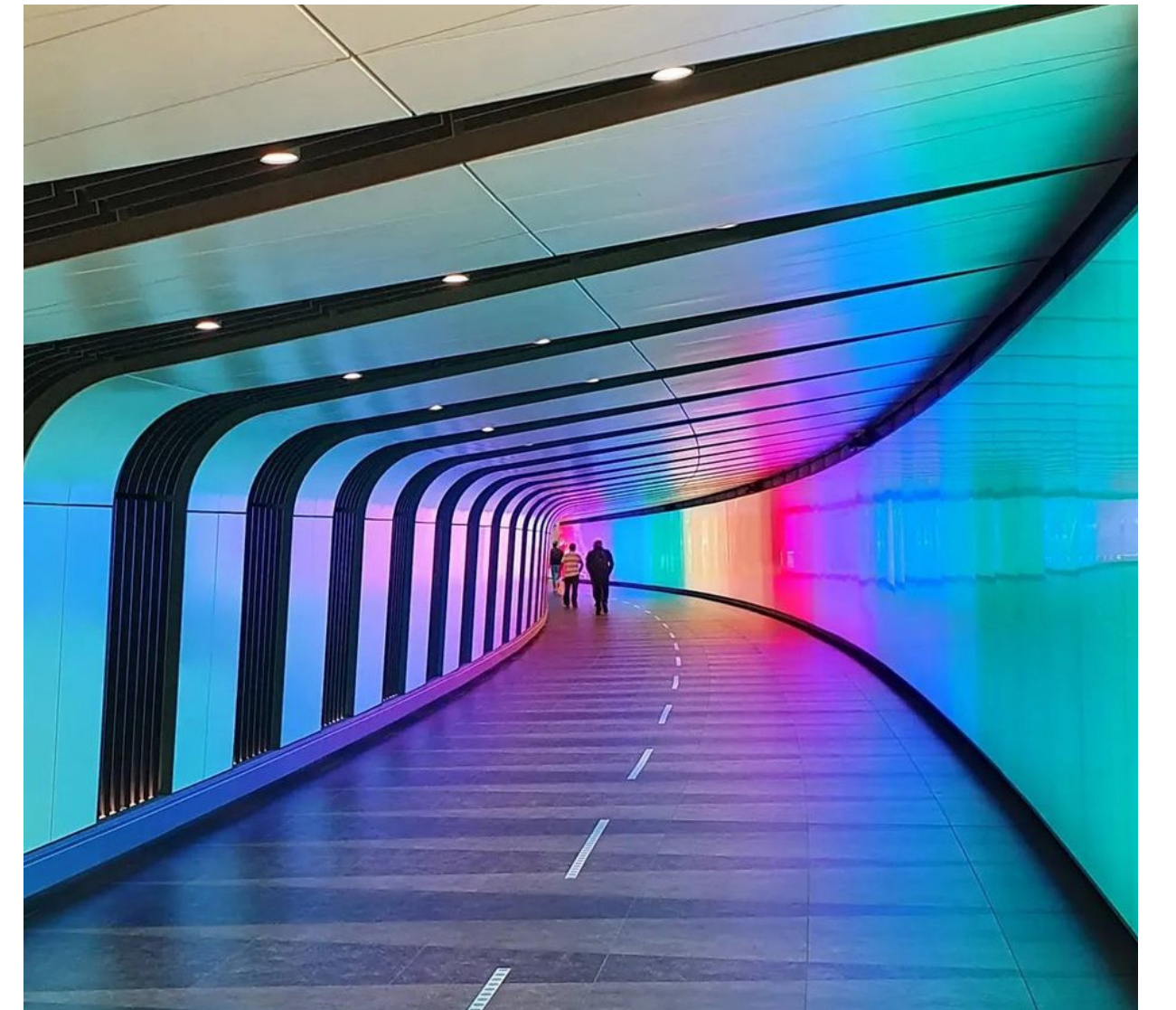
The Kings Cross Tunnel has been designed & built by Allies & Morrison architects & BAM Construction, to form a link between Kings Cross & St Pancras stations; a route which 100,000 people take per day.

The light wall is the main focus of the tunnel, located on the outside of the curve, measuring nearly 100m long.

[View here.](#)

The Light Lab designed, manufactured & installed the seamlessly jointed glass wall, back-lit with LEDs capable of emitting the full RGB spectrum & a white light spectrum from 3.0K to 6.0K. This provides a continuous curved appearance, with no shadow lines throughout.

The art wall concept was originally conceived by Speirs Major, with digital content by miriamandtom. Creating lighting in stunning muted pastels, so that the feeling of walking through the tunnel is not a harsh, neon experience, but rather works very subtly alongside the pedestrian, to create a soothing, relaxing journey.





SUSHISAMBA, Edinburgh

Bespoke Illuminated Ceiling Feature



Interior Design	Jestico & Whiles
Lighting Design	LIGHTALLIANCE
Products	Bespoke illuminated copper tubes
Services	Specialist lighting manufacture & installation
Industry	Hospitality / Leisure

W Edinburgh stands as a testament to architectural brilliance, thanks to the visionary design by Jestico + Whiles. The building seamlessly integrates modern aesthetics with the rich cultural tapestry of Edinburgh. Situated on the 10th floor is the location for the latest SUSHISAMBA Edinburgh restaurant, with an incredible panoramic view of the city from the expansive glass window surround.

Based on the original concept and lighting design of Light Alliance, who took inspiration from traditional Japanese bamboo lanterns, our specialist team were brought in to fabricate & install over 500 custom illuminated copper tubes, amongst a total of 1000 tubes, suspended from the ceiling. To ensure correct coordination The Light Lab undertook the whole ceiling installation with painted MDF joinery panelling. The copper tubes were on a special bayonet designed plate fixing, with SPI controllable LEDs, to allow for animation sequences, programmable on a stand alone Madrix controller.

This illuminated ceiling feature surrounds the stunning central tree sculpture of the restaurant entrance and main bar area, becoming an integral part of the architectural narrative and enhancing the overall dining experience.





Printworks, Manchester

Bespoke Retail Lighting



Architect
Products
Services
Industry

CDA
Bespoke signage and Glowpanel
Specialist lighting manufacture & installation
Retail & Leisure

Printworks Manchester has been transformed following a £21M refurbishment by DTZ Investors.

Printworks is a landmark leisure destination in Manchester, with 20+ bars, restaurants and leisure activities including one of the largest IMAX screens in Europe. The refurbishment, completed in 2024, was driven by the need to modernize and adapt to changing visitor expectations, marking a new era for this iconic leisure venue and former printing house.

Focusing heavily on integrating cutting-edge digital technology, including the installation of the largest digital ceiling in Europe by ADI, spanning 1,000 square meters.

The overall refurbishment was designed by Glasgow based architects CDA, who commissioned The Light Lab specialist team to fabricate and install custom LED panels & illuminated signage to several areas across the interior and external façade of the building.





Grand Central, Birmingham

Bespoke Retail Ceiling Features



Architect
Lighting Design
Products
Services
Industry

HFM
The Light Lab
Spectraglass & Custom atrium feature
Specialist lighting design, manufacture & installation
Retail & Leisure

Birmingham's Grand Central; the retail and F&B destination, integrated with the largest transport hub in the UK outside of London, has recently completed a £2m upgrade to the New Street Mall by Hammerson. The refresh works include the creation of an engaging, vibrant and bespoke lighting scheme by HFM Architects & The Light Lab.

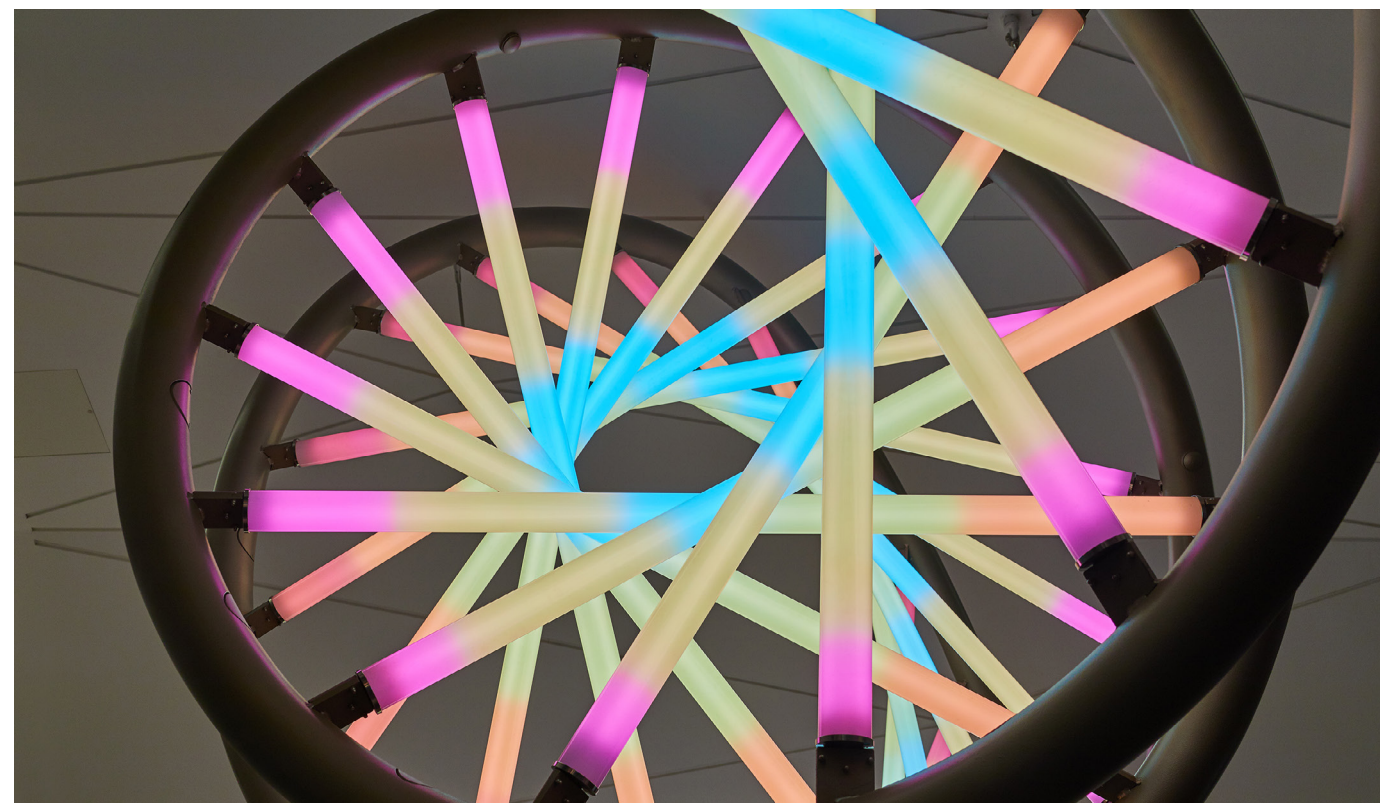
[View here](#)

Birmingham's Grand Central; the retail and F&B destination, integrated with the largest transport hub in the UK outside of London, has recently completed a £2m upgrade to the New Street Mall by Hammerson. The refresh works include the creation of an engaging, vibrant and bespoke lighting scheme by HFM Architects & The Light Lab.

HFM's approach to the challenging brief to enliven the mall experience was driven through the necessity to reconnect the prominent strand between the High Street and the New Street Mall, within the centre. Working with the specialist team at The Light Lab, HFM introduced a sinuous, dynamic and programmable lighting scheme, to better the placemaking identity of the space recently shortlisted in the 2021 darc awards in the art: bespoke category.

A part of Birmingham's important scientific history can be attributed back to the discovery of the three-dimensional helical nature of DNA by Maurice Wilkins. It was these natural waveforms that HFM used as design precedent granting the space a new, and more defined character. The scheme is split in to two phases, where the first, provides an installation piece to signify a grand arrival from the high street, into the second, where a weaving Skyscape forms the genetic fabric of the mall.

In the double-height atrium entrance, the installation of a striking bespoke feature by The Light Lab, entitled 'the helix', resembles an unravelling strand of DNA. The 'base-pairs' are integrated with the latest SPI LED technology that allows for infinite possibilities of colour, movement and interactivity to welcome the public to the destination.





IPG Mediabrands

Bespoke Office Entrance Portal Feature

Architect
Light Design
Products
Services
Industry

18 Degrees
Glowline
Specialist lighting manufacture & installation
Commercial

The Light Lab realised the lighting design concept, by 18 Degrees, to manufacture and install a bespoke illuminated entrance portal for IPG Mediabrands; situated on the 7th floor of a new office development near the Old Bailey, St Pauls.

Using Glowline LED linear fittings, The Light Lab's specialist team fabricated custom illuminated lines of light, to clad the ceiling and side wall of the office entrance portal. The Glowline, housed in aluminium fins, with a Madrix-Nebula Control System, featuring programmable pre-set scenes, achieves a unique and colourful entrance to the IPG office.





Concord London

Bespoke Rooftop Lighting Feature



Architect

E8

Lighting Design

Hurley Palmer Flatt

Products

Glowline Inground

Services

Specialist lighting manufacture & installation

Industry

Private Residence & Leisure

Concord London is the eagerly awaited mixed-used development in Marylebone Square, situated on the former Moxon Street carpark. Constructed by Kier Group, this development stands as a modern centerpiece in one of London's prime real estate locales and marks the first new mixed-use city block in the W1 postcode in the last fifty years.

Designed by E8 architects, this nine-storey, 25,160m² structure boasts 54 private and 25 affordable apartments. The ground and lower ground floors host retail, restaurant, and community spaces.

Hurley Palmer Flatt designed the full the lighting scheme – specifying The Light Lab's custom linear and curved LED fitting, Glowline Inground. Our specialist team fabricated custom Glowline fittings to achieve long, seamless lines of light across the rooftop, smoothly transitioning from straight to radiused corners on the balconies.

We also overcame the constraints of remote driver locations by using 48VDC LEDs, which also enabled us to minimise the power feed points, for design requirements.





Shrewsbury Flaxmill

Bespoke Heritage Lighting



Architect
Products
Services
Industry

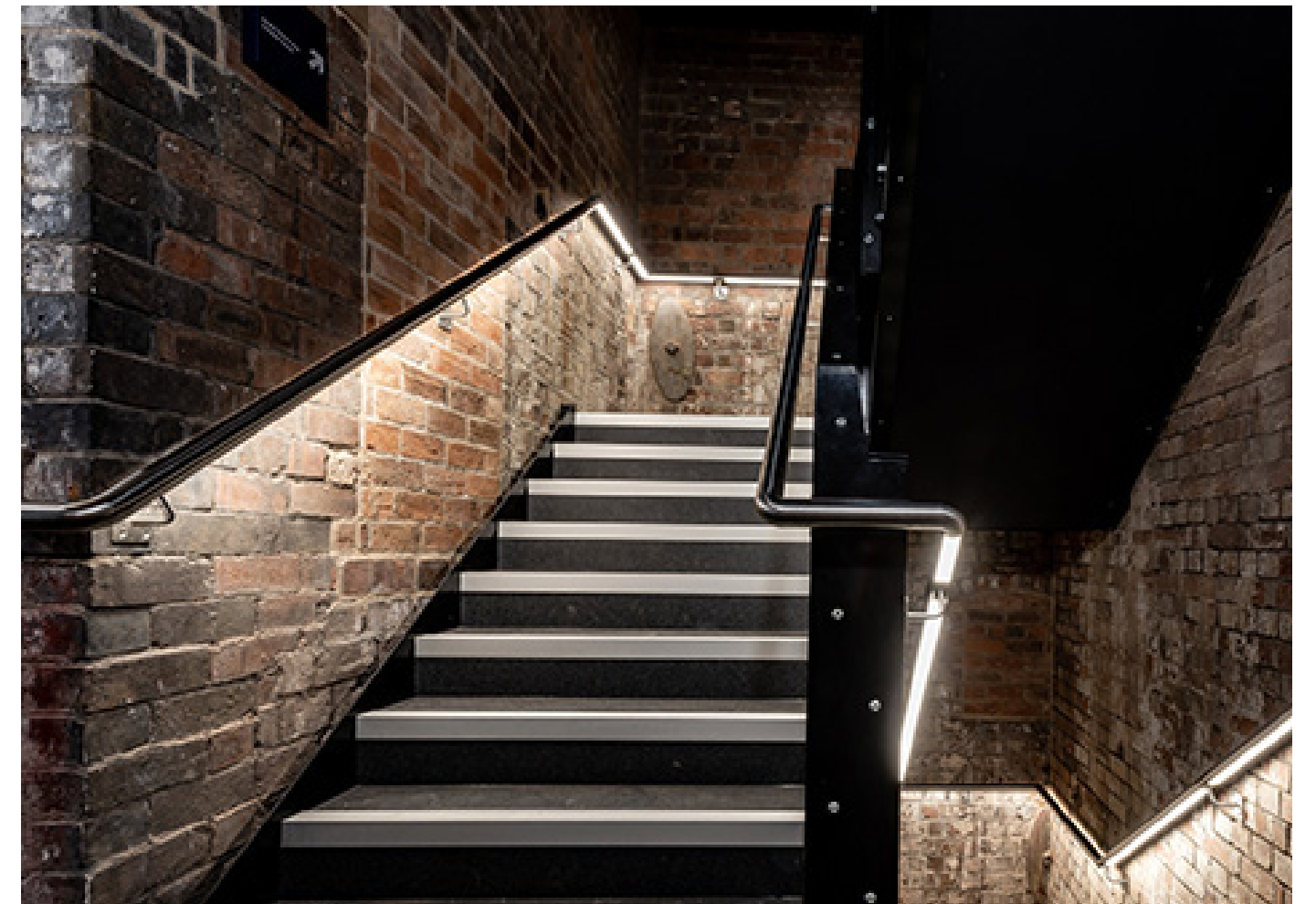
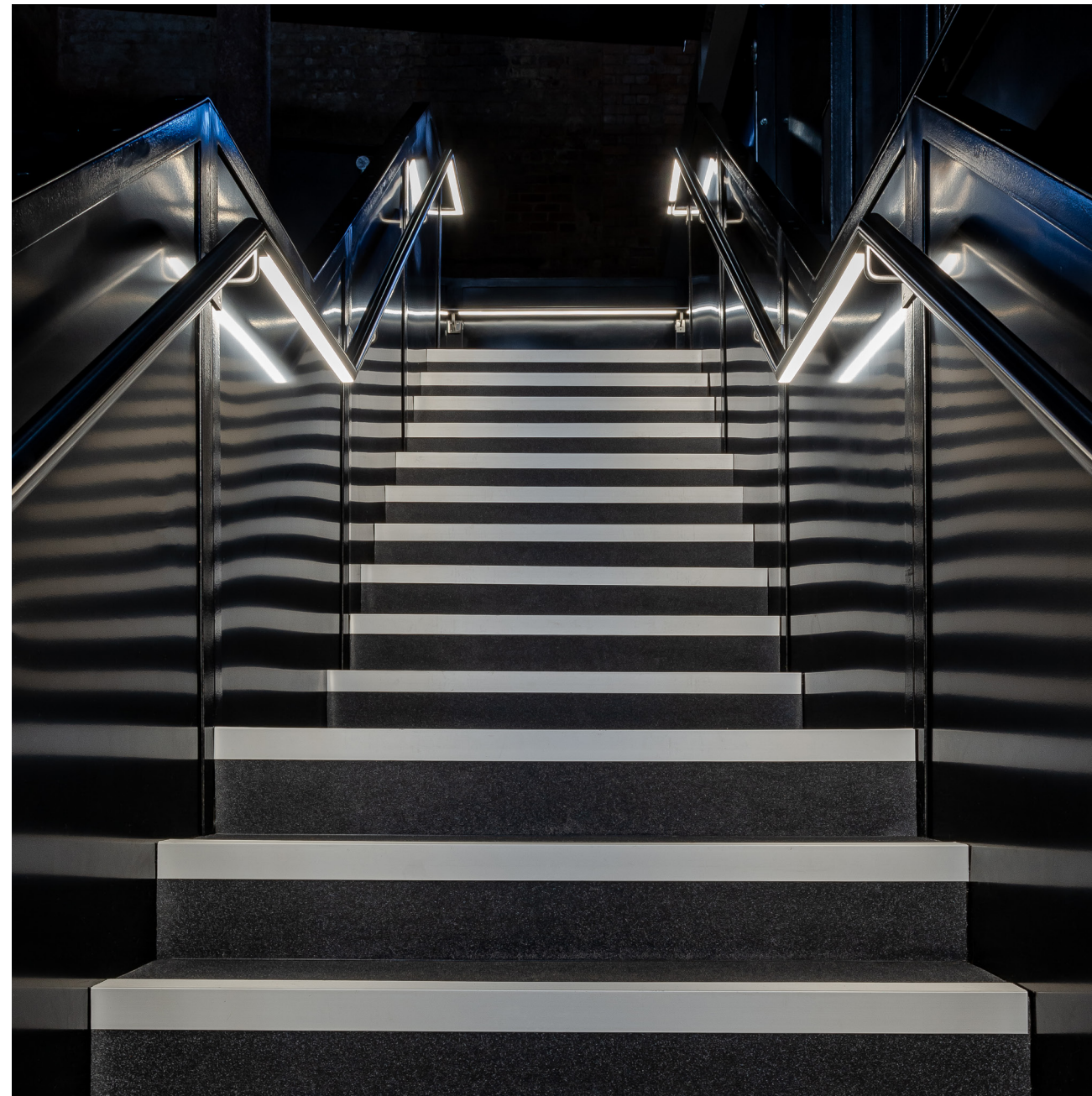
Fielden Clegg Bradley Studio
Glowrail - Brushed Stainless Steel
Specialist lighting manufacture & installation
Heritage / Hospitality & Leisure

Shrewsbury Flaxmill Maltings is one of the most important buildings of the industrial revolution, and has been part of a £28 million restoration since 2017 by Historic England and The Lottery Fund. The repair and adaptive re-use of the former flaxmill has been led by Feilden Clegg Bradley Studios & contractor Gleeds, who brought in the light lab to realise their concept design for an illuminated handrail system to light for the Grade II listed Kiln building.

Our specialist team fabricated & installed custom stainless steel lit handrail, using our Glowrail product, to light the walkways connecting the corridors and staircases within the Kiln building.

The challenges that arise with installing fittings in a heritage building, such as mounting handrail onto ancient, exposed brickwork, was handled with a light touch conservation approach, led by FCB, to 'preserve and enhances the character of the Flaxmill which required traditional craft, materials and skills'.

The site is a flagship project for Historic England in demonstrating how historic buildings can be sustainably reused and officially opened to the public in September 2024.





RUSI, 61 Whitehall

Bespoke Ceiling Feature



Architect
Products
Services
Industry

Campbell Architects
Bespoke Atrium Lighting
Specialist lighting manufacture & installation
Heritage

The Light Lab were appointed as lighting manufacturer as part of the redevelopment of the renowned Royal United Services Institute (RUSI) at 61 Whitehall; ‘the world’s oldest and the UK’s leading defence and security think tank’. Our specialist team worked alongside main contractor Coniston to assist with the transformation of the main atrium skylight and ceiling in the RUSI Library of military history.

It was key for Coniston to preserve the heritage feel of the building, so when restoring the existing 19th century ceiling frame & replacing the original Georgian glass in the ceiling, their main aim was for the lightboxes to retain the feel of natural daylight.

To achieve this design intent, our specialist team manufactured a bespoke backlit lightbox design, to initial specification by Campbell Architects. Replacing all glass panels in the existing atrium and library ceiling skylights, and backlighting with matrix boards to allow for tonal change throughout the day. The filmed glass panels also allow an even diffused appearance in all glass, with a sealed lightbox zone to avoid any dirt/dust from sitting on the glass.

The Light Lab team also completed full installation onsite, alongside electrical contractors Raytell, to ensure a high end, quality finish.





Broadgate Quarter

Bespoke Atrium Feature Light



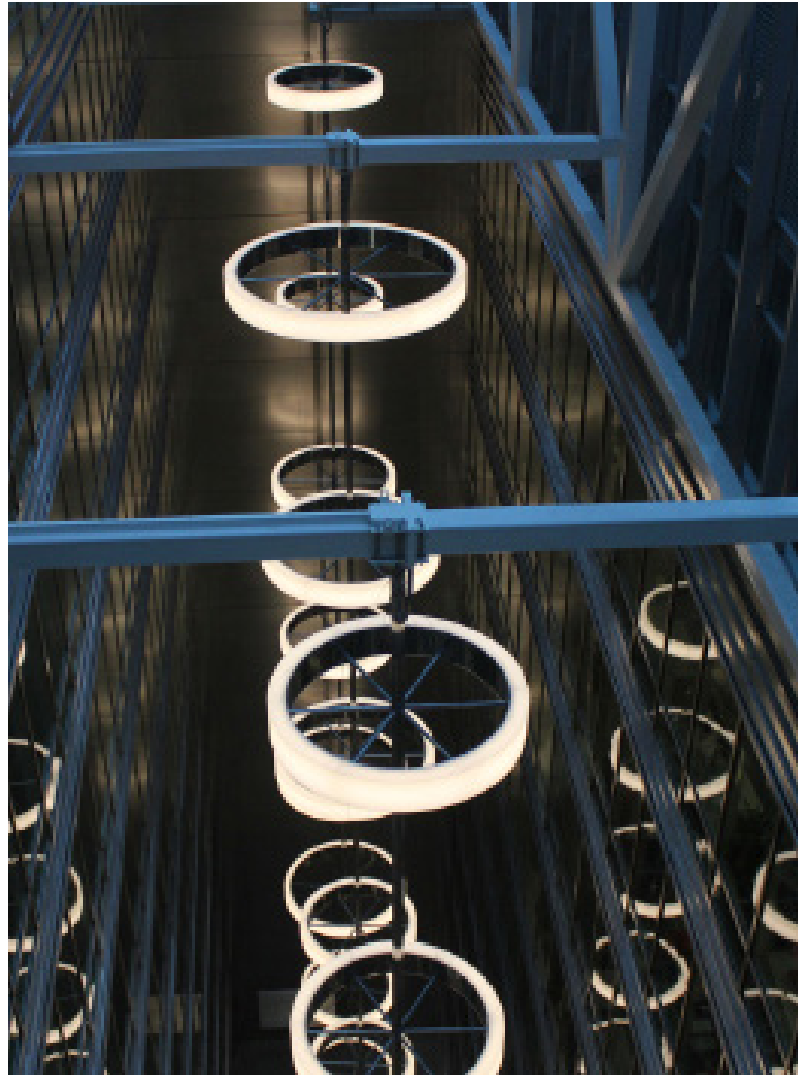
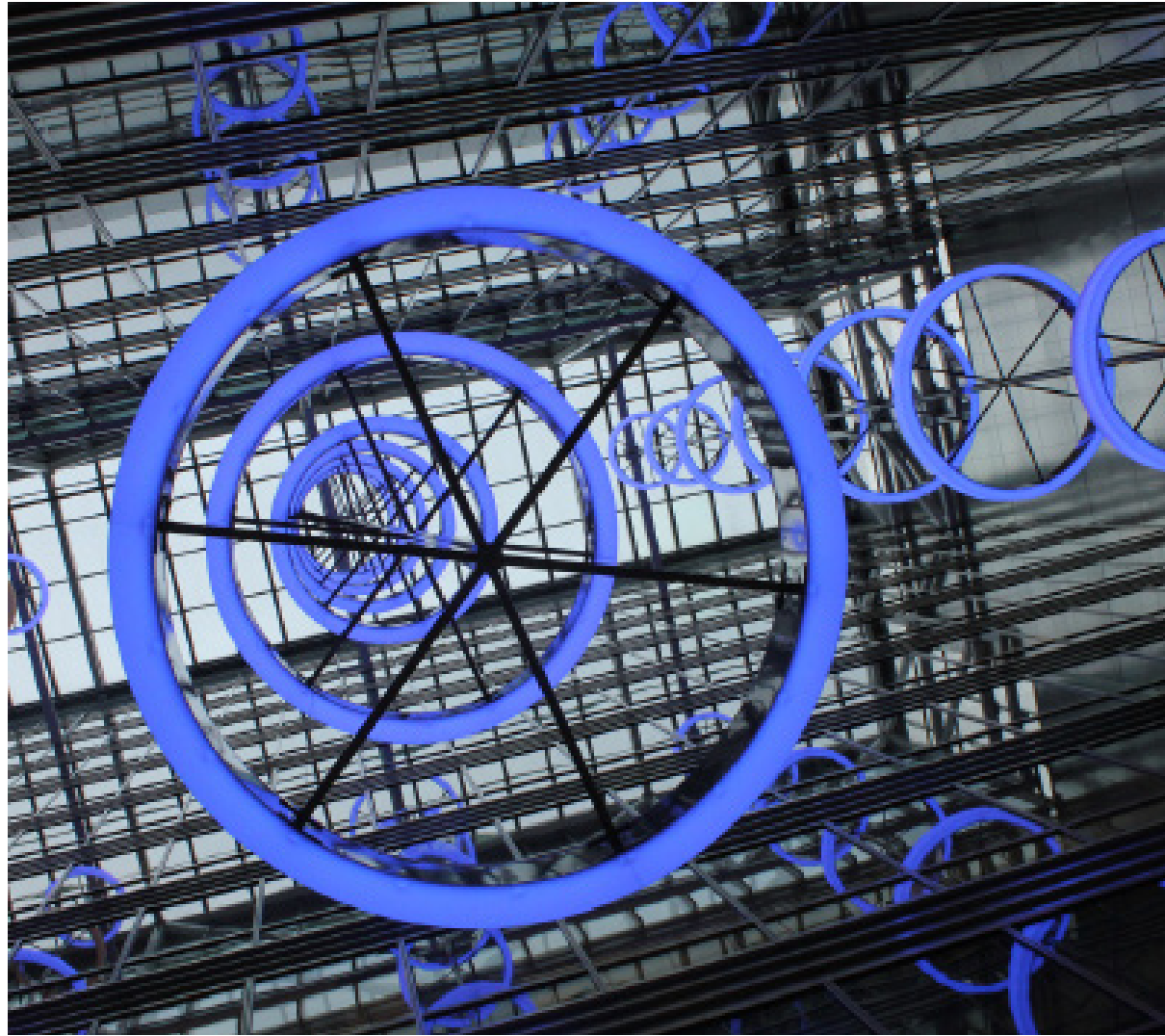
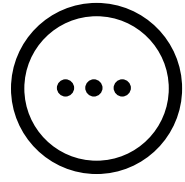
Architect
Light Design
Products
Services
Industry

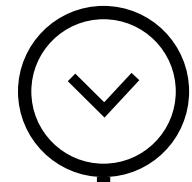
John Robertson
Cundall
Bespoke atrium feature light
Specialist lighting manufacture & installation
Commercial

The Light Lab manufactured and installed this stunning bespoke atrium light feature at the commercial offices of Broadgate Quarter in the City. The installation took place over a 6 week period, using our specialist installers, working alongside a team of abseilers, to ensure that each bespoke halo structure was installed as designed. This is our largest atrium lighting project to date, with the installation reaching almost the full length of the 50 metre atrium.

When tackling the full project, the main design challenges involved the structure of the feature; particularly the balance of providing sufficient strength to each illuminated ring, whilst ensuring there was no visible shadowing. At the same time there was the requirement of a very light-weight structure to fix to the existing atrium support beams.

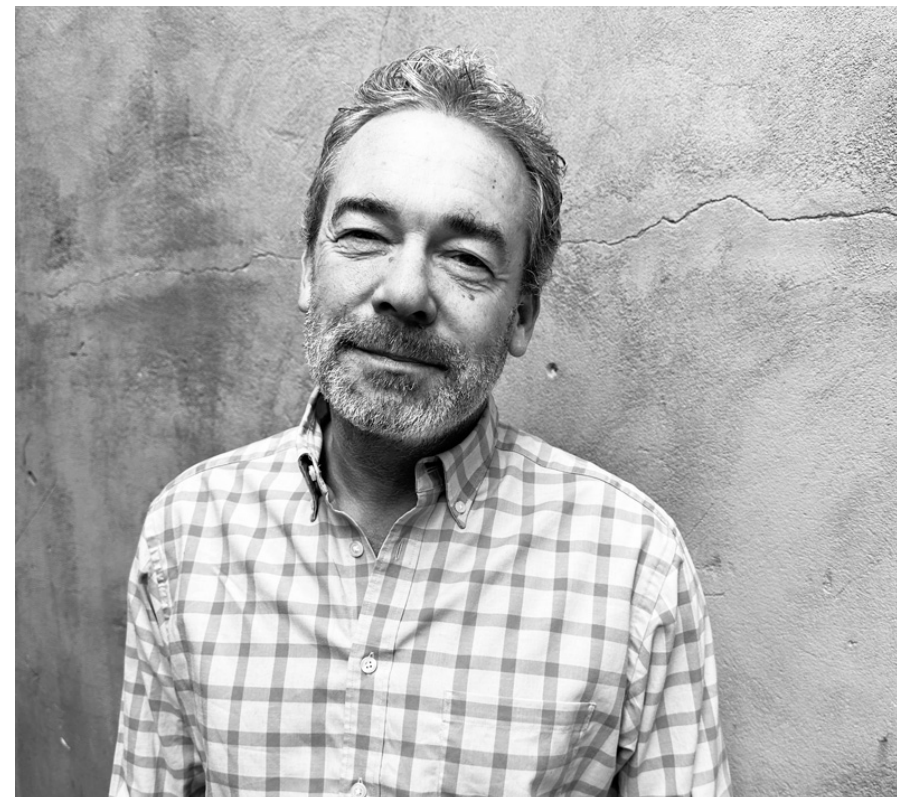
The final design was approximately 750Kg per chandelier (including all cabling) which for a 45m long structure, was a considerable design challenge. The cabling alone was a sizeable task, requiring the running and managing of over 1km of cabling of sufficient size, to ensure all LED rings were consistently and evenly illuminated.





Meet The Team

The three company Directors are also the lead project & production managers and they will be your point of contact throughout the duration of this project.



Phil Riley, Director / Senior Project Manager

Phil started his career as an independent management consultant, specializing in project management for large multinationals, focusing on manufacturing, logistics, and installation. He co-founded The Light Lab with Marcus in 2002, and has led the project management team over the last 20 years, working on a large scale projects across the UK, EU including Bobby Moore Bridge, Wembley & Pomo in Norway, Also heading up our US projects team, recent work including a large scale installation at Penn Station NYC.



Graeme Laurie, Director / Senior Project Manager

Graeme holds an MSc in Light and Lighting from UCL and has worked with The Light Lab since 2003. He has managed a variety of lighting installations in the UK and overseen international projects in the Middle East and Australia, handling complex logistics and large-scale engineering challenges. Recent projects include London College of Fashion, Paspaley (Australia), Broadgate Quarter and Centria Mall, Saudi Arabi.



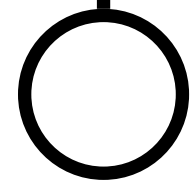
Esta Williams - Account Manager

Esta brings a unique blend of expertise to her role as Account Manager at The Light Lab. With a background in lighting design at LDPI and as an architectural assistant at CDA, she has developed a strong foundation in both creative design and technical execution. Transitioning into account management, Esta now applies her comprehensive knowledge of both fields to excel in project management at The Light Lab, ensuring seamless coordination and successful outcomes for every project she oversees.



Marcus Cave, Director / Production Director

Marcus brings over 30 years of experience in lighting design, installation, and creative product engineering. He has led major global projects including the award-winning King's Cross Light Tunnel, Sushi Samba, and University of the Arts London. He collaborates regularly with leading architects and lighting designers such as Nulty+, Arup, BDP, and ChapmanBDSP.



“

Testimonials

“In our design solutions for Friars Walk, we required the exterior stainless steel and glass balustrade and façades to contribute towards elevating the centre’s night-time economy. To achieve this, we adopted The Light Lab’s new technology to provide an exciting and energetic character to the centre’s public realm. Not only does it bring Friars Walk to life at night, extending the dwell time of shoppers, but it also allows for visual connectivity between the upper and lower external areas of the centre.

This ensures shoppers can easily navigate through the centre, capitalizing on the diversity of retail and leisure available.”

Brian Tracey, Director at Leslie Jones Architecture



“

”



“From the very early stages, the staircase played a central role in the overall design of the space. The lighting enhanced the geometry of this fantastic design by Allies and Morrison and created a seamless directionality for the visitors, staff and students.

The involvement of The Light Lab early on, ensured a good integration of the lighting into the curved handrail and a smooth installation process, despite the challenging geometry and services coordination. The final result can only leave you in awe, especially when you find yourself in the space, experiencing first-hand the playful combination of the curves with the concrete material that the warm light so beautifully highlights. It is one of the designs that our lighting team in Buro Happold is most proud of.”

Myrto Skreta-Krikou, Associate Lighting Designer, Buro Happold



Testimonials

Andrew Bissell from Cundall, speaks of the close working relationship between the designers and the light lab, to ensure the installation ran smoothly and was completely true to the design. “Having designed such a large lighting element to fill the atrium space, we needed to be sure the design intent was retained through the construction detail and installation process. The Light Lab understand the importance of even the smallest of details and how to manage and undertake an installation of this nature. As such the client has the lighting effect originally presented along with a high quality and low maintenance product and installation.” *Broadgate Quarter, London*



“The West End Concourse at Penn Station was a large, very public, project in New York. Time was absolutely critical to meet the tight deadline set by the Governor’s office. The Light Lab executed the project on time and within budget. From a design standpoint, they understood how to translate a concept into reality from the desired lighting effect to addressing durability and maintained issues. The result is a high quality, lighting installation which has been received extremely well by the New York Public.”

Peter Fajak – Skidmore, Owings & Merrill (Penn Station)



the light lab

bright ideas

22 Holywell Row
London
EC2A 4JB

+44 (0) 207 278 2678
info@thelightlab.com

Thank you