



Glowsheet

spec sheet

Key features

Tailored: Fully tailorable size providing even surface illumination as a backlighting source.

LED: Wide range of light outputs, colour temperature and colours.

Control: Switched, 0-10/1-10v, DALI, DMX and SPI dimming protocols.

Material: Edgelit and etched acrylic to suit project requirements.

Aesthetic: Backlighting tool for use with additional diffuser.

Longevity: 50,000+ LED lifetime expectancy.

Sustainability: Maintainable LED modules.

Application: Interior and exterior. Please contact office to discuss application.

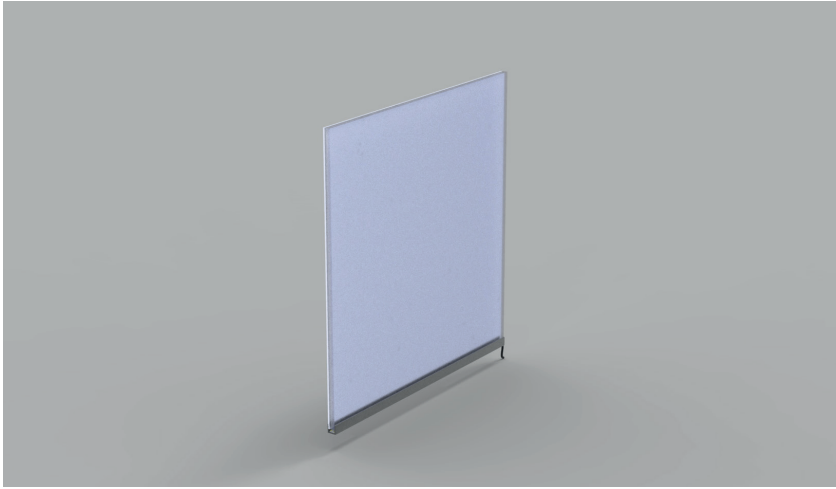
Glowsheet by The Light Lab



Glowsheet

the light lab
bright ideas

Product Details Glowsheet



Specification

Output	SO	HO
Power Consumption	average 28W/m ²	average 36W/m ²
Voltage	24VDC	24VDC
IP Rating	IP40 or IP65	IP40 or IP65
LED Colour ¹	2.7K/3.0K/4.0K/5.0K, RGBW or WWCW (White Mix 2.7K - 6.5K)	
Dimensions:	Width	2000mm (max)
	Length	3000mm (max)
	Depth	5, 8, 10 or 12mm
Control	0-10V/1-10V/DMX/DALI/SPI	

Notes

- 1 Other colours available on request.
2. Glowsheet should be used in conjunction with other diffuse materials and can be mounted in various channels. Please contact the office to discuss your requirements.

Order code

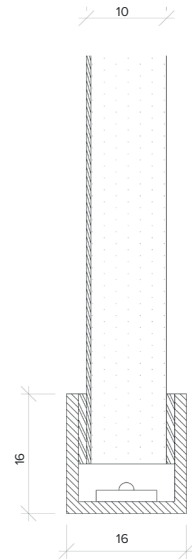
Glowsheet- Output-IP Rating-LED Colour-Length x Width(mm)-Dimming

Example code: Glowsheet-SO-IP40-3.0K-1200x300-DALI

Description: Glowsheet, standard output, IP40, 24VDC constant voltage LED with 3000K colour temperature. Overall dimensions = 1200x300mm. DALI dimmable.



Typical X Section
IP40



The Light Lab
22 Holywell Row
London EC2A 4JB
+44 (0) 207 278 2678
@thelightlabltd
www.thelightlab.com

the light lab
bright ideas

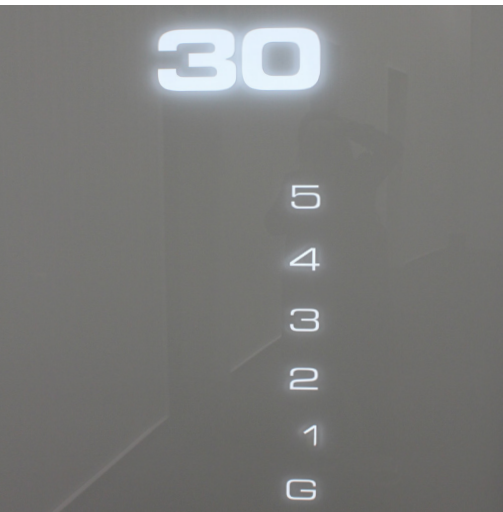
Project Images



Orpington Library



30 Cannon Street



30 Cannon Street



Aurora house



The Filaments SW8



Love Supreme Festival

