



# Glowsheet

spec sheet

## Key features

**Tailored:** Fully tailorable size providing even surface illumination as a backlighting source.

**LED:** Wide range of light outputs, colour temperature and colours.

**Control:** Switched, 0-10/1-10v, DALI, DMX and SPI dimming protocols.

**Material:** Edgelit and etched acrylic to suit project requirements.

**Aesthetic:** Backlighting tool for use with additional diffuser.

**Longevity:** 50,000+ LED lifetime expectancy.

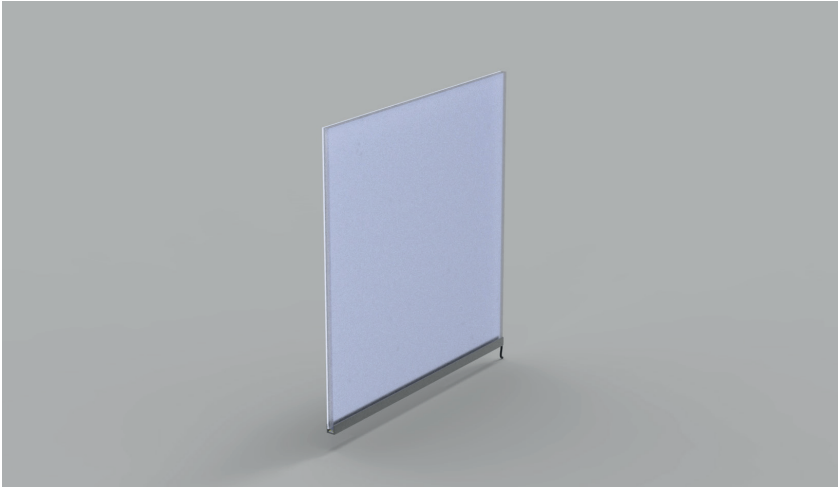
**Sustainability:** Maintainable LED modules.

**Application:** Interior and exterior. Please contact office to discuss application.



Glowsheet

# Product Details Glowsheet



## Specification

Output	SO	HO
Power Consumption	average 28W/m <sup>2</sup>	average 36W/m <sup>2</sup>
Voltage	24VDC	24VDC
IP Rating	IP40 or IP65	IP40 or IP65
LED Colour <sup>1</sup>	2.7K/3.0K/4.0K/5.0K, RGBW or WWCW (White Mix 2.7K - 6.5K)	
Dimensions:		
Width	2000mm (max)	
Length	3000mm (max)	
Depth	5, 8, 10 or 12mm	
Control	0-10V/1-10V/DMX/DALI/SPI	

### Notes

- 1 Other colours available on request.
- 2. Glowsheet should be used in conjunction with other diffuse materials and can be mounted in various channels. Please contact the office to discuss your requirements.

### Order code

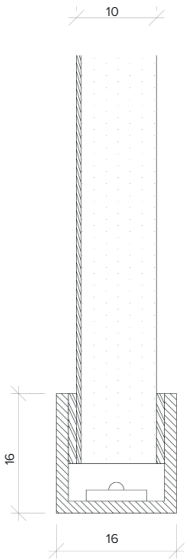
Glowsheet- Output-IP Rating-LED Colour-Length x Width(mm)-Dimming

**Example code: Glowsheet-SO-IP40-3.0K-1200x300-DALI**

Description: Glowsheet, standard output, IP40, 24VDC constant voltage LED with 3000K colour temperature. Overall dimensions = 1200x300mm. DALI dimmable.



Typical X Section  
IP40



The Light Lab  
22 Holywell Row  
London EC2A 4JB  
+44 (0) 207 278 2678  
@thelightlabltd  
www.thelightlab.com

**the light lab**  
bright ideas



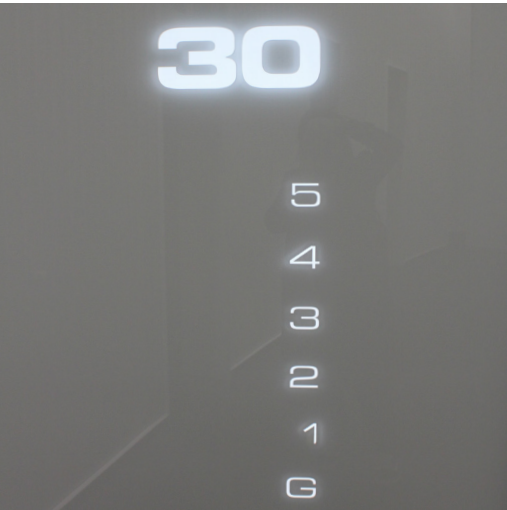
Project Images



Orpington Library



30 Cannon Street



30 Cannon Street



Aurora house



The Filaments SW8



Love Supreme Festival

