

Product Details LED Trimless Ceiling Panel



Specification

	SO	HO
Dimensions	Max 3.0m x 1.2m x 80mm depth	Max 3.0m x 1.2m x 50mm depth
Colour	2.7K/3.0K/3.2K/ 3.8K/4.0K/5K	2.7K/3.0K/3.2K/ 3.8K/4.0K/5K
Input Voltage	24Vdc	24Vdc
Power Consumption	110W/sqm	150W/sqm
IP Rating	IP44	IP44
Lumen Output	9500 lm/sqm	13000 lm/sqm
Frame Finish	RAL t.b.c.	RAL t.b.c.
Fixing	PIN fixings or fastmount	PIN fixings or fastmount

Order code

LED TRIMLESS CEILING PANEL-WIDTH-LENGTH-DEPTH-COLOUR-IP-FINISH-FIXING
 e.g. LED TRIMLESS CEILING PANEL-XXmm-XXmm-XXmm-2.7K-IP44-WHITE-FRAME

WIDTH - LENGTH - DEPTH - COLOUR - IP - FINISH - FIXING
 XXmm XXmm XXmm 2.7K IP44 White PIN fixings
 3.0K Frame
 3.2K
 3.5K
 4.0K
 5.0K

Drivers

non-dimmable power supplies:

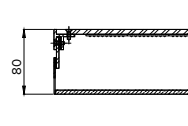
1-10V /DALI/DMX dimmable power supplies to be ordered separately

Please call our sales team who will make sure specification suits application
 LED Trimless Ceiling Panel by The Light Lab

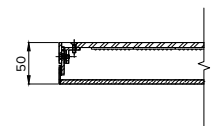


X-SECTION

SO

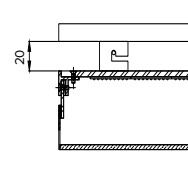


HO

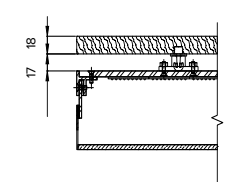


FIXING OPTION

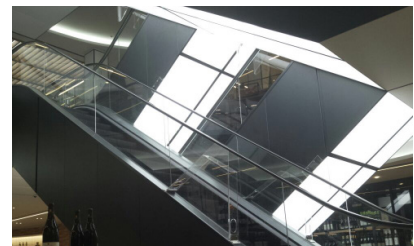
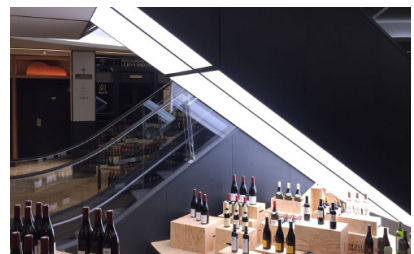
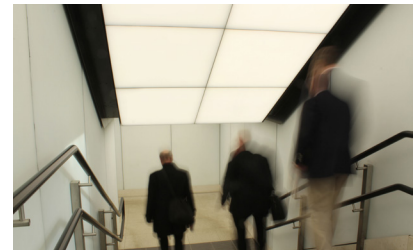
Pin Frame



Fastmount



Project images



The Light Lab
 22 Holywell Row
 London EC2A 4JB
 United Kingdom
 +44 (0) 207 278 2678
 @thelightlabtd
 www.thelightlab.com