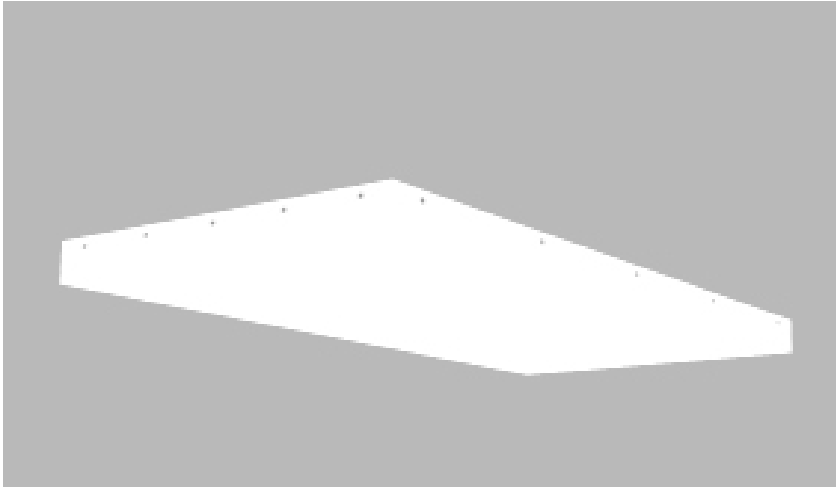


# Product Details Glowpanel Trimless LT



## Specification

Output	SO	HO
Power Consumption	40W/m <sup>2</sup>	80W/m <sup>2</sup>
Voltage	24VDC	24VDC
IP Rating	IP40	IP40
LED Colour <sup>1</sup>	2.7K/3.0K/4.0K/5.0K, RGBW or WWCW (White Mix 2.7K - 6.5K)	
Dimensions:	Width	1200mm (max)
	Length	3000mm (max)
	Depth <sup>2</sup>	60mm
Mount Type <sup>3</sup>	Surface (SM), Recessed Wall (RE), Wall (WA) or Ceiling (CE)	
Finish	5 sided acrylic diffuser	
Control	0-10V/1-10V/DMX/DALI/SPI	

### Notes

- 1 Other colours available on request.
- 2 Depth excludes grommet, glands & cables.
- 3 Special mechanical consideration is required for ceiling applications.

### Order code

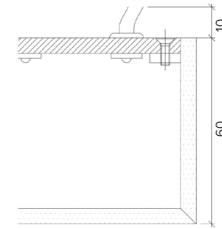
Glowpanel Trimless LT- Output-IP Rating-LED Colour-Mount Type-Frame Finish- Length x Width(mm)- Dimming

**Example code: Glowpanel Trimless LT-SO-IP40-3.0K-SM-BR-1200x300-DALI**

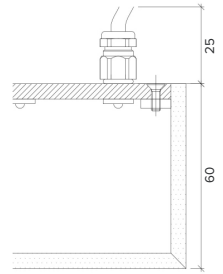
Description: Glowpanel Trimless LT, standard output, IP40, 24VDC constant voltage LED with 3000K colour temperature. Surface mounted with 5 sided acrylic diffuser. Overall dimensions = 1200x300mm mm. DALI dimmable.

## X Section

IP40

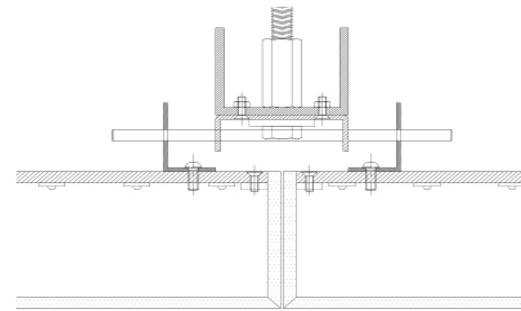


IP65

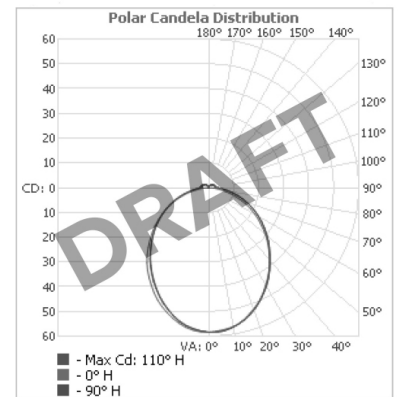


## Mount Type

Ceiling (CE)



## Photometric Data



Photometric data available late Summer 2022.



The Light Lab  
22 Holywell Row  
London EC2A 4JB  
+44 (0) 207 278 2678  
@thelightlabltd  
www.thelightlab.com

**the light lab**  
bright ideas