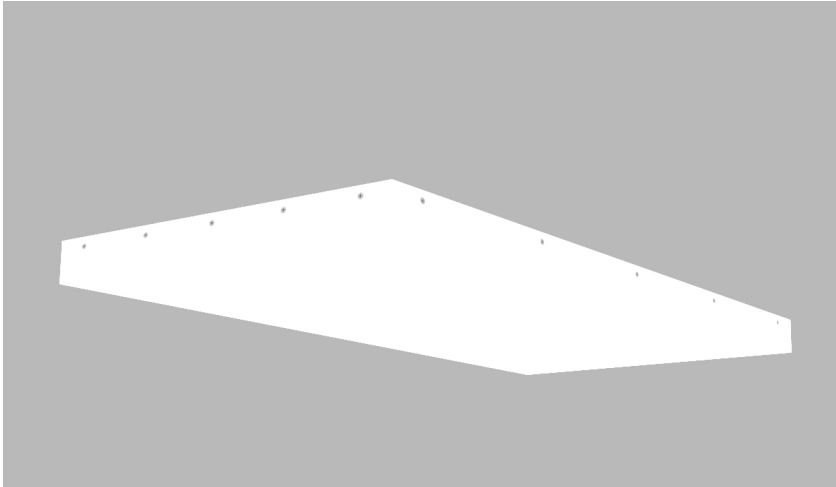


Product Details Glowpanel Trimless LT



Specification

| | | |
|-------------------------|--|--------------------|
| Output | SO | HO |
| Power Consumption | 40W/m ² | 80W/m ² |
| Voltage | 24VDC | 24VDC |
| IP Rating | IP40 | IP40 |
| LED Colour ¹ | 2.7K/3.0K/4.0K/5.0K, RGBW or WWCW (White Mix 2.7K - 6.5K) | |
| Dimensions: | Width | 1200mm (max) |
| | Length | 3000mm (max) |
| | Depth ² | 60mm |
| Mount Type ³ | Surface (SM), Recessed Wall (RE), Wall (WA) or Ceiling (CE) | |
| Finish | 5 sided acrylic diffuser | |
| Control | 0-10V/1-10V/DMX/DALI/SPI | |

Notes

- 1 Other colours available on request.
- 2 Depth excludes grommet, glands & cables.
- 3 Special mechanical consideration is required for ceiling applications.

Order code

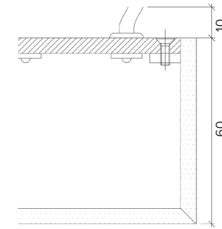
Glowpanel Trimless LT- Output-IP Rating-LED Colour-Mount Type-Frame Finish- Length x Width(mm)- Dimming

Example code: Glowpanel Trimless LT-SO-IP40-3.0K-SM-BR-1200x300-DALI

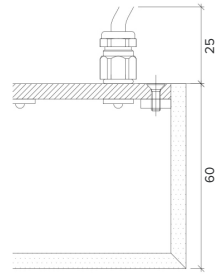
Description: Glowpanel Trimless LT, standard output, IP40, 24VDC constant voltage LED with 3000K colour temperature. Surface mounted with 5 sided acrylic diffuser. Overall dimensions = 1200x300mm mm. DALI dimmable.

X Section

IP40

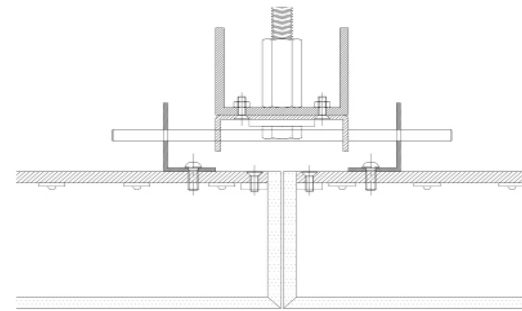


IP65

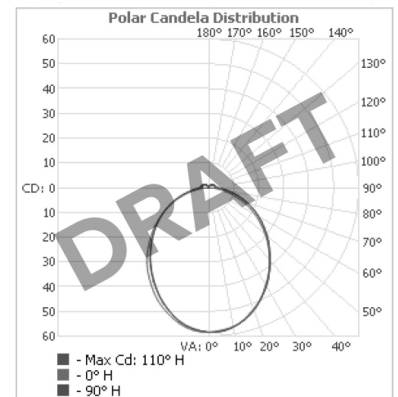


Mount Type

Ceiling (CE)



Photometric Data



Photometric data available late Summer 2022.



The Light Lab
22 Holywell Row
London EC2A 4JB
+44 (0) 207 278 2678
@thelightlabltd
www.thelightlab.com

the light lab
bright ideas