



# Glowpanel

spec sheet

## Key features

**Tailored:** Fully tailorable size providing even surface illumination with minimal depth.

**LED:** Wide range of light outputs, colour temperatures and colours.

**Control:** Switched, 0-10/1-10v, DALI, DMX and SPI dimming protocols.

**Material:** Rigid diffusion material chosen to suit application.

**Aesthetic:** Even illumination and discreet fixing details with trimless options available.

**Longevity:** 50,000+ LED lifetime expectancy.

**Sustainability:** Maintainable LED modules.

**Application:** Interior and exterior wall, ceiling and floor options.

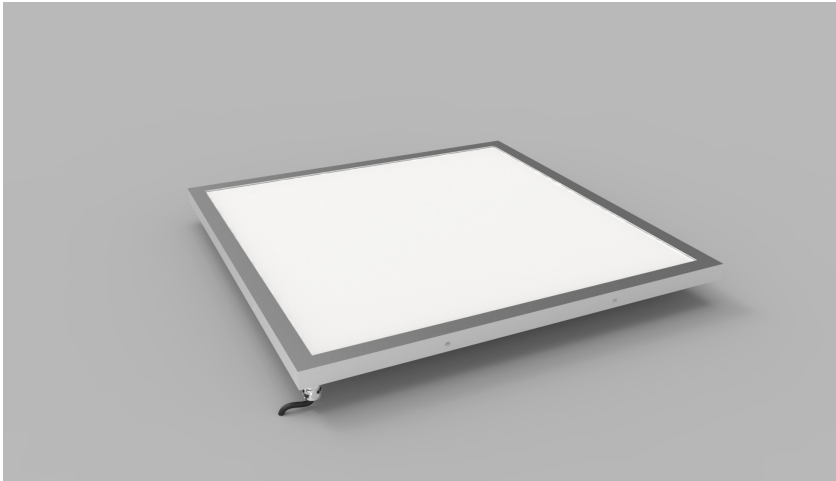
Glowpanel by The Light Lab



**Glowpanel**  
**Glowpanel Trimless 35**  
**Glowpanel Trimless 65**  
**Glowpanel Trimless LT**  
**Glowpanel LT**  
**Glowtile**

**the light lab**  
bright ideas

# Product Details Glowpanel



## Specification

Output	SO	HO
Power Consumption	average 56W/m <sup>2</sup>	average 72W/m <sup>2</sup>
Voltage	24VDC	24VDC
IP Rating	IP40 or IP65	IP40 or IP65
LED Colour <sup>1</sup>	2.0K/3.0K/4.0K/5.0K, RGBW or WWCW (White Mix 2.7K - 6.5K)	
Dimensions:	Width	1500mm (max)
	Length	3000mm (max)
	Depth <sup>2</sup>	20mm
Mount Type <sup>3</sup>	Surface (SM), Recessed Wall (RE), Wall (WA) or Ceiling (CE)	
Finish	Brushed S/Steel or RAL Finish	
Control	0-10V/1-10V/DMX/DALI/SPI	

### Notes

- 1 Other colours available on request.
- 2 Depth excludes grommet, glands & cables.
- 3 Special mechanical consideration is required for ceiling applications.

### Order code

Glowpanel - Output-IP Rating-LED Colour-Mount Type-Frame Finish-  
Length x Width(mm)- Dimming

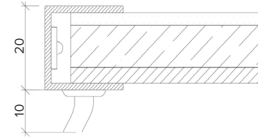
**Example code: Glowpanel-SO-IP40-3.0K-SM-BR-1200x300-DALI**

Description: Glowpanel, standard output, IP40, 24VDC constant voltage LED with 3000K colour temperature. Surface mounted with brushed stainless steel frame. Overall dimensions = 1200x300mm mm. DALI dimmable.

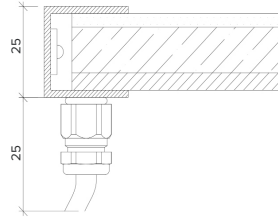


## X Section

IP40

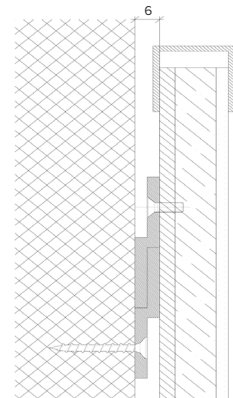


IP65

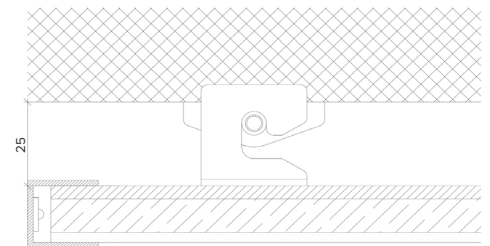


## Mount Type

Wall (WA)



Ceiling (CE)



The Light Lab  
22 Holywell Row  
London EC2A 4JB  
+44 (0) 207 278 2678  
@thelightlabltd  
www.thelightlab.com

**the light lab**  
bright ideas

# Product Details Glowpanel Trimless 35



## Specification

Output	SO	HO
Power Consumption	average 56W/m <sup>2</sup>	average 76W/m <sup>2</sup>
Voltage	24VDC	24VDC
IP Rating	IP40 or IP65	IP40 or IP65
LED Colour <sup>1</sup>	2.0K/3.0K/4.0K/5.0K, RGBW or WWCW (White Mix 2.7K - 6.5K)	
Dimensions:	Width	1500mm (max)
	Length	3000mm (max)
	Depth <sup>2</sup>	35mm
Mount Type <sup>3</sup>	Surface (SM), Recessed Wall (RE), Wall (WA) or Ceiling (CE)	
Finish	White (WH) or Custom RAL (RAL)	
Control	0-10V/1-10V/DMX/DALI/SPI	

### Notes

- 1 Other colours available on request.
- 2 Depth excludes grommet, glands & cables.
- 3 Special mechanical consideration is required for ceiling applications.

### Order code

Glowpanel Trimless 35- Output-IP Rating-LED Colour-Mount Type-Frame Finish- Length x Width(mm)- Dimming

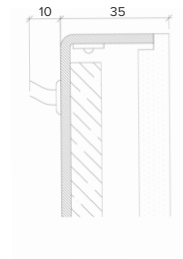
**Example code: Glowpanel Trimless 35-SO-IP40-3.0K-SM-BR-1200x300-DALI**

Description: Glowpanel Trimless 35, standard output, IP40, 24VDC constant voltage LED with 3000K colour temperature. Surface mounted with powder coated chassis. Overall dimensions = 1200x3000 mm. DALI dimmable.

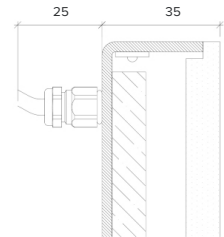


### X Section

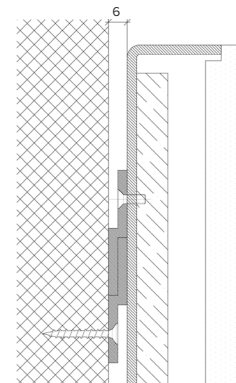
IP40



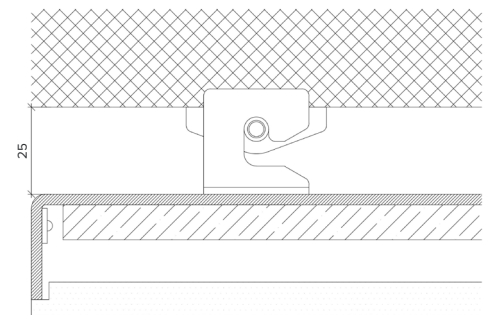
IP65



### Wall Fixing



### Ceiling Fixing



The Light Lab  
22 Holywell Row  
London EC2A 4JB  
+44 (0) 207 278 2678  
@thelightlabltd  
www.thelightlab.com

**the light lab**  
bright ideas

# Product Details Glowpanel Trimless 65



## Specification

Output	SO	HO
Power Consumption	40W/m <sup>2</sup>	80W/m <sup>2</sup>
Voltage	24VDC	24VDC
IP Rating	IP40 or IP65	IP40 or IP65
LED Colour <sup>1</sup>	2.0K/3.0K/4.0K/5.0K, RGBW or WWCW (White Mix 2.7K - 6.5K)	
Dimensions:	Width	1500mm (max)
	Length	3000mm (max)
	Depth <sup>2</sup>	65mm
Mount Type <sup>3</sup>	Surface (SM), Recessed Wall (RE), Wall (WA) or Ceiling (CE)	
Finish	White (WH) or Custom RAL (RAL)	
Control	0-10V/1-10V/DMX/DALI/SPI	

### Notes

- 1 Other colours available on request.
- 2 Depth excludes grommet, glands & cables.
- 3 Special mechanical consideration is required for ceiling applications.

### Order code

Glowpanel Trimless 65- Output-IP Rating-LED Colour-Mount Type-Frame Finish-  
Length x Width(mm)- Dimming

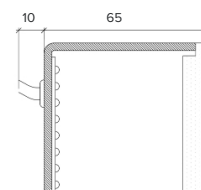
**Example code: Glowpanel Trimless 65-SO-IP40-3.0K-SM-BR-1200x300-DALI**

Description: Glowpanel Trimless 65, standard output, IP40, 24VDC constant voltage LED with 3000K colour temperature. Surface mounted with powder coated chassis. Overall dimensions = 1200x3000mm. DALI dimmable.

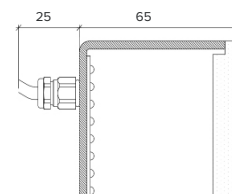


### X Section

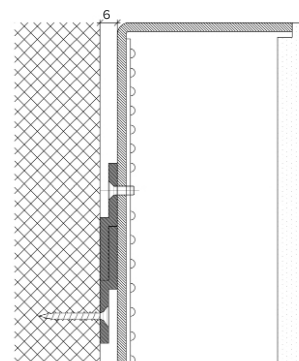
IP40



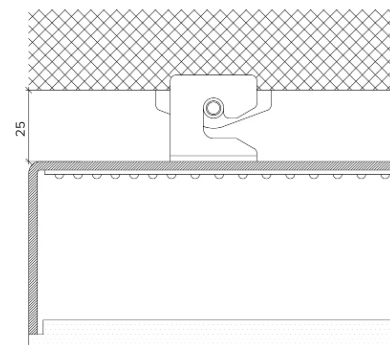
IP65



### Wall Fixing



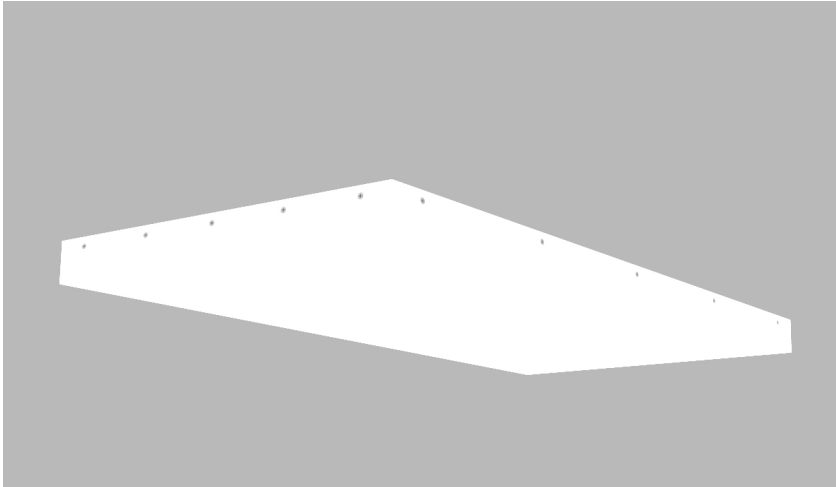
### Ceiling Fixing



The Light Lab  
22 Holywell Row  
London EC2A 4JB  
+44 (0) 207 278 2678  
@thelightlabltd  
www.thelightlab.com

**the light lab**  
bright ideas

# Product Details Glowpanel Trimless LT



## Specification

Output	SO	HO
Power Consumption	40W/m <sup>2</sup>	80W/m <sup>2</sup>
Voltage	24VDC	24VDC
IP Rating	IP40	IP40
LED Colour <sup>1</sup>	2.7K/3.0K/4.0K/5.0K, RGBW or WWCW (White Mix 2.7K - 6.5K)	
Dimensions:	Width	1200mm (max)
	Length	3000mm (max)
	Depth <sup>2</sup>	60mm
Mount Type <sup>3</sup>	Surface (SM), Recessed Wall (RE), Wall (WA) or Ceiling (CE)	
Finish	5 sided acrylic diffuser	
Control	0-10V/1-10V/DMX/DALI/SPI	

### Notes

- 1 Other colours available on request.
- 2 Depth excludes grommet, glands & cables.
- 3 Special mechanical consideration is required for ceiling applications.

### Order code

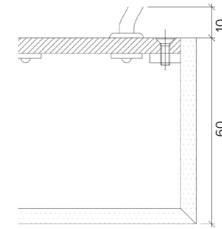
Glowpanel Trimless LT- Output-IP Rating-LED Colour-Mount Type-Frame Finish- Length x Width(mm)- Dimming

**Example code: Glowpanel Trimless LT-SO-IP40-3.0K-SM-BR-1200x300-DALI**

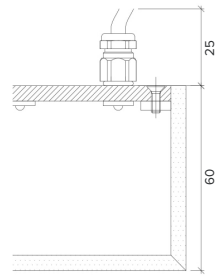
Description: Glowpanel Trimless LT, standard output, IP40, 24VDC constant voltage LED with 3000K colour temperature. Surface mounted with 5 sided acrylic diffuser. Overall dimensions = 1200x300mm mm. DALI dimmable.

## X Section

IP40

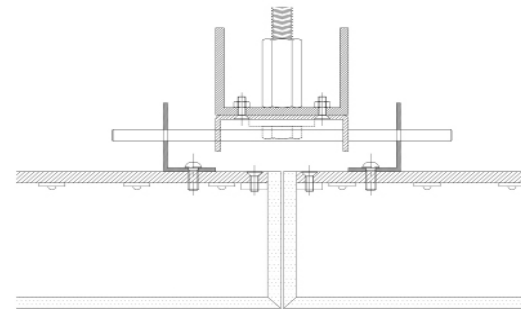


IP65

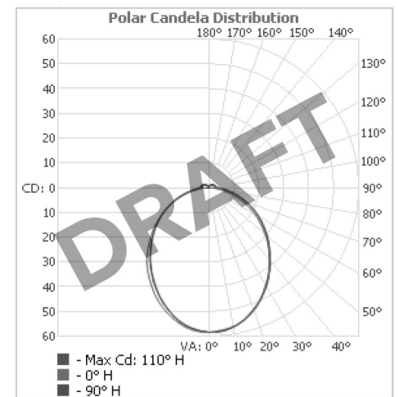


## Mount Type

Ceiling (CE)



## Photometric Data



Photometric data available late Summer 2022.



The Light Lab  
22 Holywell Row  
London EC2A 4JB  
+44 (0) 207 278 2678  
@thelightlabltd  
www.thelightlab.com

**the light lab**  
bright ideas

# Product Details Glowpanel LT



## Specification

Output	SO	HO
Power Consumption	40W/m <sup>2</sup>	80W/m <sup>2</sup>
Voltage	24VDC	24VDC
IP Rating	IP40	IP40
LED Colour <sup>1</sup>	2.7K/3.0K/4.0K/5.0K, RGBW or WWCW (White Mix 2.7K - 6.5K)	
Dimensions:	Width	1200mm (max)
	Length	3000mm (max)
	Depth <sup>2</sup>	85mm
Mount Type <sup>3</sup>	Ceiling (CE)	
Finish	Black (BK) or Custom RAL (RAL)	
Control	0-10V/1-10V/DMX/DALI/SPI	

### Notes

- 1 Other colours available on request.
- 2 Depth excludes grommet, glands & cables.
- 3 Special mechanical consideration is required for ceiling applications.

### Order code

Glowpanel LT- Output-IP Rating-LED Colour-Mount Type-Frame Finish- Length x Width(mm)- Dimming

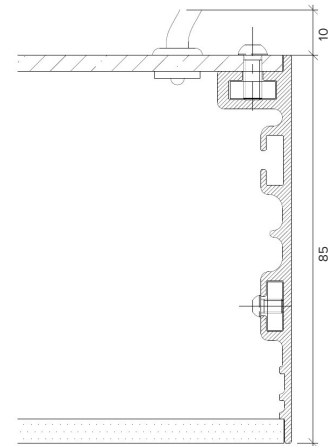
**Example code: Glowpanel LT-SO-IP40-3.0K-CE-BR-1200x300-DALI**

Description: Glowpanel LT, standard output, IP40, 24VDC constant voltage LED with 3000K colour temperature. Ceiling mounted with powder coated frame. Overall dimensions = 1200x300mm mm. DALI dimmable.



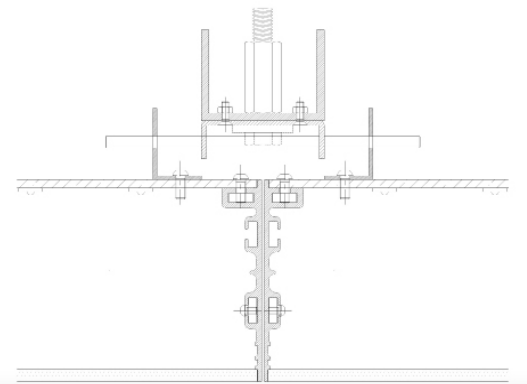
## X Section

IP40

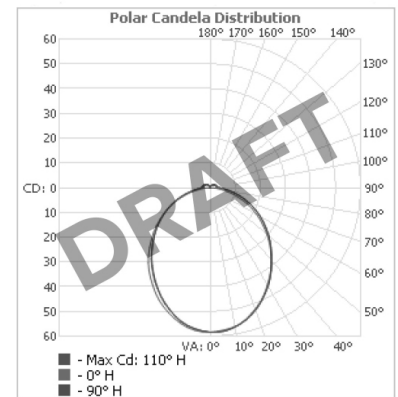


## Mount Type

Ceiling (CE)



## Photometric Data



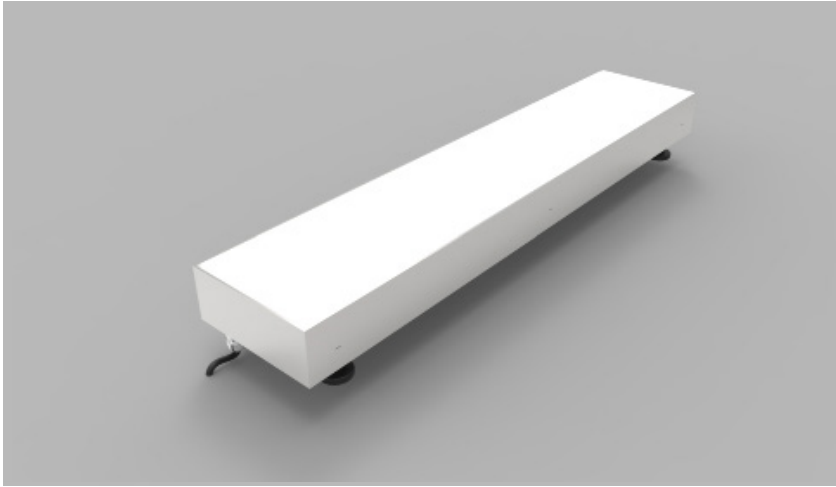
Photometric data available late Summer 2022.



The Light Lab  
22 Holywell Row  
London EC2A 4JB  
+44 (0) 207 278 2678  
@thelightlabtd  
www.thelightlab.com

**the light lab**  
bright ideas

# Product Details Glowtile



## Specification

Output	SO	HO
Power Consumption	average 56W/m <sup>2</sup>	210W/m <sup>2</sup>
Voltage	24VDC	24VDC
IP Rating	IP67	IP67
LED Colour <sup>1</sup>	2.7K/3.0K/4.0K/5.0K, RGBW or WWCW (White Mix 2.7K - 6.5K)	
Dimensions:	Width	1000mm (max)
	Length	1500mm (max)
	Depth	76.2mm
Mount Type	Inground (IN)	
Finish	White (WH) or Custom RAL (RAL)	
Control	0-10V/1-10V/DMX/DALI/SPI	

### Notes

1 Other colours available on request.

### Order code

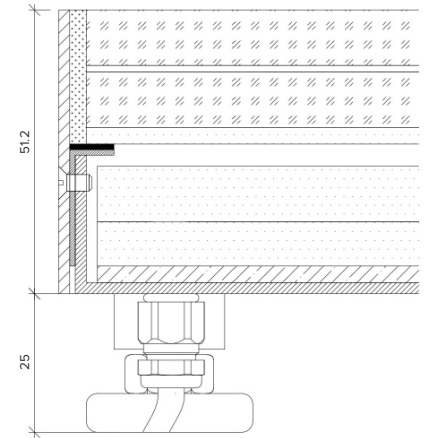
Glowtile- Output-IP Rating-LED Colour-Mount Type-Frame Finish-  
Length x Width(mm)-Dimming

**Example code: Glowtile-SO-IP67-3.0K-IN-WH-1200x300-DALI**

Description: Glowtile, standard output, IP67, 24VDC constant voltage LED with 3000K colour temperature. Inground with white powdercoat frame.  
Overall dimensions = 1200x300mm mm. DALI dimmable.



X Section



The Light Lab  
22 Holywell Row  
London EC2A 4JB  
+44 (0) 207 278 2678  
@thelightlabltd  
www.thelightlab.com

**the light lab**  
bright ideas

Project Images



Sadler's Wells



Breakspear Park



85 Finsbury Square



Great Western Arcade



12 Arthur St



Waterloo Station



Ropemaker Place