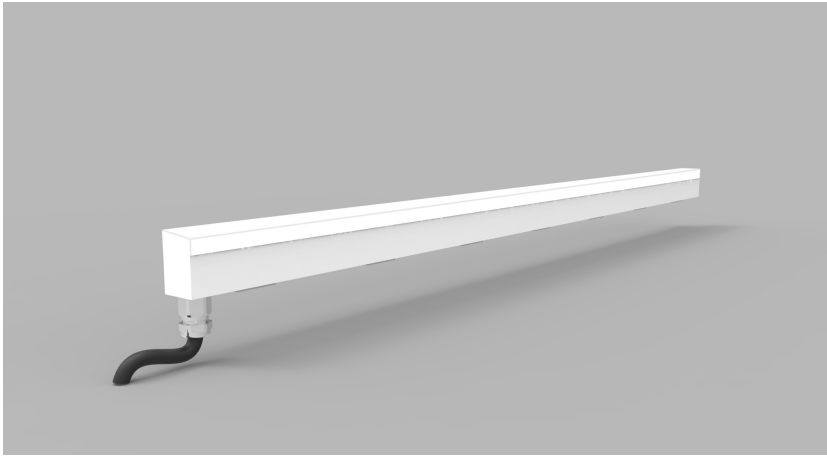


Product Details GL16



Specification

	SO	HO	SHO
Length	115mm to 2965mm in 50mm increments	115mm to 2965mm in 50mm increments	115mm to 2965mm in 50mm increments
Colour	3.0K/4.0K/ 5.0K	2.7K/3.0K/3.5K/ 4.0K/5.0K	2.7K/3.0K/3.5K/ 4.0K/5.0K
Input Voltage	24Vdc	24Vdc	24Vdc
Power Consumption	9.6 W/m	14 W/m	18 W/m
Luminaire Efficiency	56 lm/W	78 lm/W	78 lm/W
IP Rating	IP44 or IP65	IP44 or IP65	IP44 or IP65
Type	Flush or Proud	Flush or Proud	Flush or Proud

Order code

GL16-LENGTH-OUTPUT-COLOUR-TYPE-IP-FIXING
e.g. GL16-XXmm-SO-2.7K-FLUSH-IP44-VC

WIDTH	LENGTH	OUTPUT	COLOUR	TYPE	IP	FIXING
GL16	XXmm	SO	2.3K	Flush	IP44	S
		HO	2.7K	Proud	IP65	C
		SHO	3.0K			PLS
			3.5K			
			4.0K			
			5.0K			

Drivers

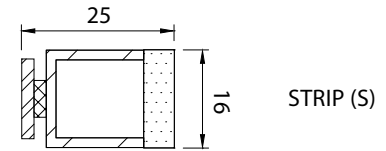
non-dimmable power supplies:
1-10V /DALI/DMX dimmable power supplies to be ordered separately

Please call our sales team who will make sure specification suits application

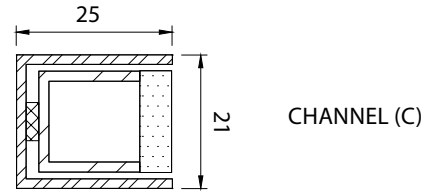
Glowline by The Light Lab



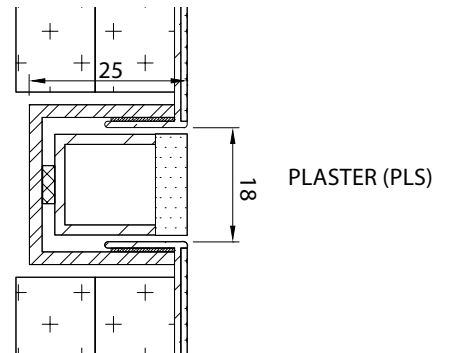
Fixing Methods



STRIP (S)

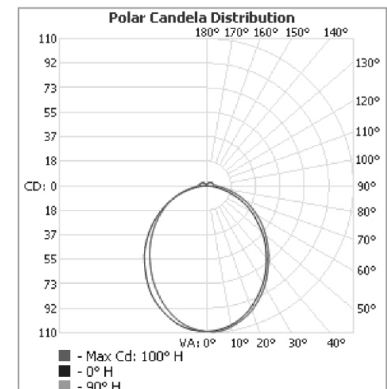


CHANNEL (C)



PLASTER (PLS)

Photometric Info



The Light Lab
22 Holywell Row
London EC2A 4JB
United Kingdom
+44 (0) 207 278 2678
@thelightlabtd
www.thelightlab.com