



# Glowline - Inground

spec sheet

## Key features

**Tailored:** Fully tailorable in curved/straight and angular sections with even light diffusion throughout.

**LED:** Wide range of light outputs, colour temperatures and colours.

**Control:** Switched, 0-10/1-10v, DALI, DMX and SPI dimming protocols.

**Material:** Acrylic diffuser with anodised and powder coated chassis.

**Aesthetic:** Flush mounted or proud diffuser with no visible mechanical fixing and seamless joins.

**Longevity:** 50,000+ LED lifetime expectancy.

**Sustainability:** Maintainable LED modules.

**Application:** Interior and exterior floor applications.

Glowline - Inground by The Light Lab



**Glowline GL25 - Inground**  
**Glowline GL38 - Inground**  
**Glowline GL50 - Inground**

the light lab  
bright ideas

# Product Details GL25 Inground



## Specification

Output	SO	HO
Power Consumption	9.6W/m	14.4W/m
Voltage	24VDC	24VDC
IP Rating	IP67	IP67
LED Colour <sup>1</sup>	2.7K/3.0K/4.0K/5.0K, RGBW or WWCW (White Mix 2.7K - 6.5K)	
Dimensions:	Width	25mm
	Length	120mm to 1520mm in 50mm increments
	Depth <sup>2</sup>	43.8mm
Mount Type	Base Mount (BM) or Flange Mount (FM)	
Finish	Flush (F)	
Control	0-10V/1-10V/DMX/DALI/SPI	

### Notes

- 1 Other colours available on request.
- 2 Depth excludes grommet, glands & cables.
- 3 For curved and shaped configurations, please contact the office to discuss your requirements.

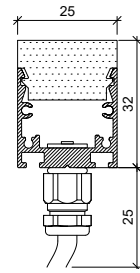
### Order code

GL25-Output-IP Rating-LED Colour-Mount Type-Finish-Length-Dimming  
**Example: Code: G38-SO-IP67-3.0K-BM-F-1520-DALI**

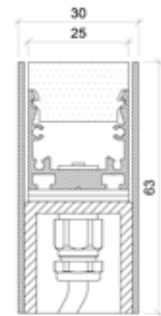
Description: Glowline 25 Inground, standard output, IP67, 24VDC constant voltage LED with 3000K colour temperature. Base mount with flush diffuser.  
 Length=1520mm. DALI dimmable.



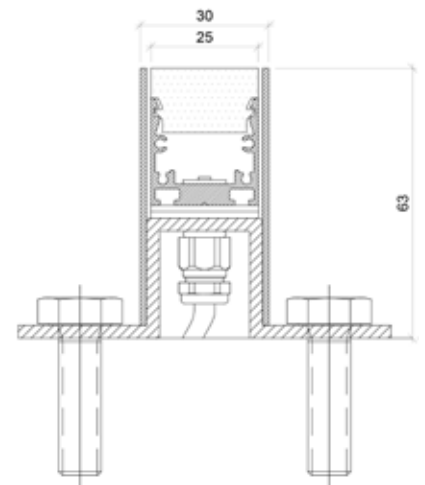
## Chasis



## Base Mount (BM)



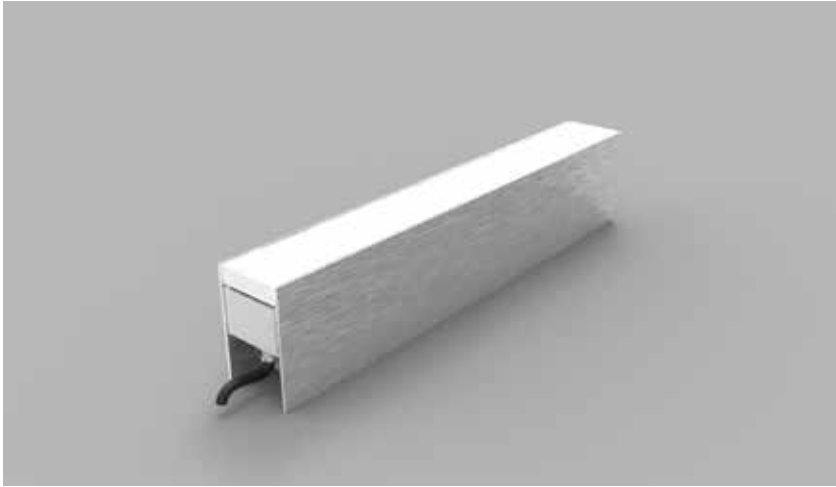
## Flange Mount (FM)



The Light Lab  
 22 Holywell Row  
 London EC2A 4JB  
 +44 (0) 207 278 2678  
 @thelightlabltd  
 www.thelightlab.com

**the light lab**  
 bright ideas

# Product Details GL38 Inground



## Specification

Output	SO	HO
Power Consumption	9.6W/m	14.4W/m
Voltage	24VDC	24VDC
IP Rating	IP67	IP67
LED Colour <sup>1</sup>	2.7K/3.0K/4.0K/5.0K, RGBW or WWCW (White Mix 2.7K - 6.5K)	
Dimensions:	Width	38mm
	Length	115mm to 1515mm in 50mm increments
	Depth <sup>2</sup>	43.8mm
Mount Type	Base Mount (BM) or Flange Mount (FM)	
Finish	Flush (F)	
Control	0-10V/1-10V/DMX/DALI/SPI	

### Notes

- 1 Other colours available on request.
- 2 Depth excludes grommet, glands & cables.
- 3 For curved and shaped configurations, please contact the office to discuss your requirements.

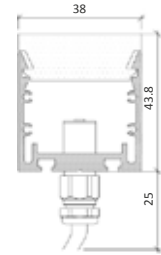
### Order code

GL38-Output-IP Rating-LED Colour-Mount Type-Finish-Length-Dimming  
**Example: Code: G38-SO-IP67-3.0K-BM-F-1215-DALI**

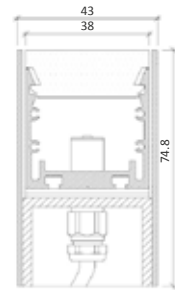
Description: Glowline 38 Inground, standard output, IP67, 24VDC constant voltage LED with 3000K colour temperature. Base mount with flush diffuser. Length=1215mm. DALI dimmable.



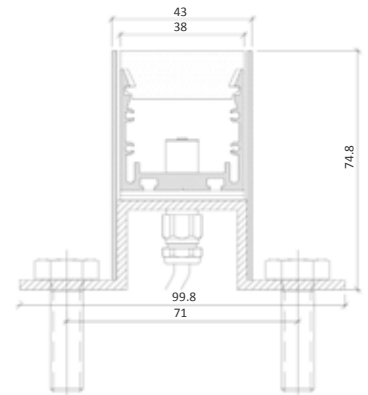
## Chasis



## Base Mount (BM)



## Flange Mount (FM)



The Light Lab  
 22 Holywell Row  
 London EC2A 4JB  
 +44 (0) 207 278 2678  
 @thelightlabltd  
 www.thelightlab.com

**the light lab**  
 bright ideas

# Product Details GL50 Inground



## Specification

Output	SO	HO
Power Consumption	9.6W/m	14.4W/m
Voltage	24VDC	24VDC
IP Rating	IP67	IP67
LED Colour <sup>1</sup>	2.7K/3.0K/4.0K/5.0K, RGBW or WWCW (White Mix 2.7K - 6.5K)	
Dimensions:	Width	50.8mm
	Length	115mm to 1515mm in 50mm increments
	Depth <sup>2</sup>	56mm
Mount Type	Base Mount (BM) or Flange Mount (FM)	
Finish	Flush (F)	
Control	0-10V/1-10V/DMX/DALI/SPI	

### Notes

- 1 Other colours available on request.
- 2 Depth excludes grommet, glands & cables.
- 3 For curved and shaped configurations, please contact the office to discuss your requirements.

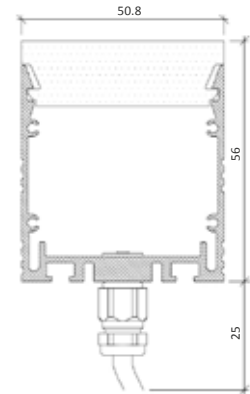
### Order code

GL50-Output-IP Rating-LED Colour-Mount Type-Finish-Length-Dimming  
**Example: Code: GL50-SO-IP67-3.0K-BM-F-1215-DALI**

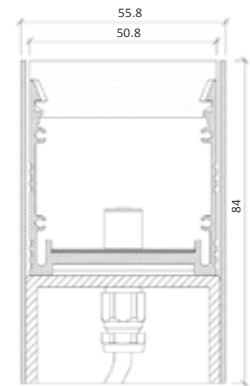
Description: Glowline 50 Inground, standard output, IP67, 24VDC constant voltage LED with 3000K colour temperature. Base mount with flush diffuser. Length=1215mm. DALI dimmable.



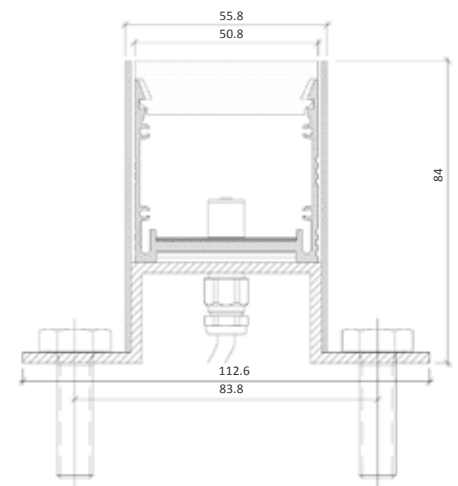
## Chasis



## Base Mount (BM)



## Flange Mount (FM)



The Light Lab  
 22 Holywell Row  
 London EC2A 4JB  
 +44 (0) 207 278 2678  
 @thelightlabltd  
 www.thelightlab.com

**the light lab**  
 bright ideas

Project Images



Omagh Firestation



Here East, Stratford



Thomas More Square



Omagh Firestation



Here East



Here East, Stratford



Thomas More Square