



# Spectraglass

spec sheet

## Key features

**Tailored:** Fully tailorable size providing even surface illumination through edge lighting technology.

**LED:** Wide range of light outputs, colour temperatures and colours.

**Control:** Switched, 0-10/1-10v, DALI, DMX and SPI dimming protocols.

**Material:** Heatsoaked tempered glass with laminate options for all glazing applications.

**Aesthetic:** Minimal frame detail and mechanical fixing for discreet architectural integration.

**Longevity:** 50,000+ LED lifetime expectancy.

**Sustainability:** Maintainable LED modules.

**Application:** Wide range of applications, including balustrade, canopy and structural.

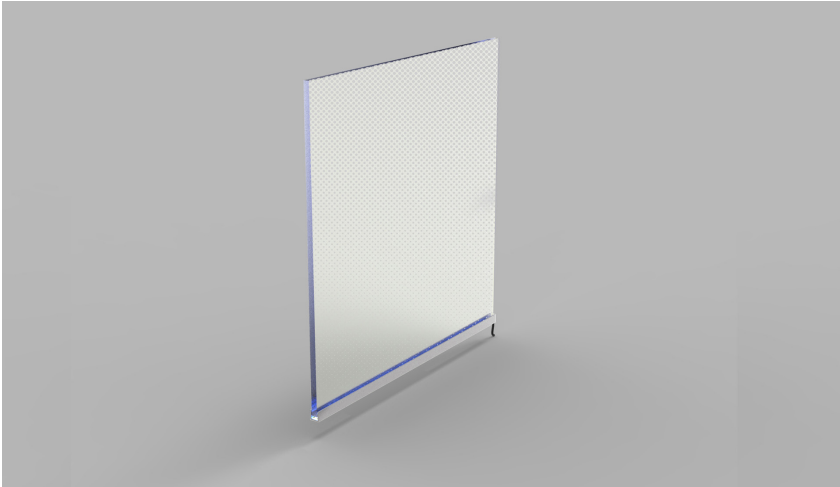
Spectraglass by The Light Lab



Spectraglass

the light lab  
bright ideas

# Product Details Spectraglass



## Specification

Output	HO	SHO
Power Consumption <sup>1</sup>	average 56W/m <sup>2</sup>	average 76W/m <sup>2</sup>
Voltage	24VDC	24VDC
IP Rating	IP40 or IP65	IP40 or IP65
LED Colour <sup>2</sup>	2.0K/3.0K/4.0K/5.0K, RGBW or WWCW (White Mix 2.7K - 6.5K)	
Dimensions:		
Width <sup>3</sup>	1600mm (max)	
Length <sup>3</sup>	3500mm (max)	
Thickness <sup>4</sup>	6, 8, 19 or 12mm single sheet 15.5, 17.5, 21.5, 25.5mm laminated	
Mount Type	Balustrade (BL), Fins (FN), Canopy (CN)	
Frame Finish	White (WH) or Custom RAL (RAL)	
Control	0-10V/1-10V/DMX/DALI/SPI	

### Notes

- 1 Assumes 1000 x 500mm panel lit on 2-sides.
- 2 Other LED colours available on request.
- 3 Maximum material dimensions may not achieve even surface illumination.
- 4 Laminate types: PVB (Polyvinyl Butral) or SGP (SentryGuard Plus).
5. Other finishes available on request.

### Order code

Spectraglass-IP Rating-LED Colour-Mount Type-Frame Finish-  
Length x Width(mm)-Dimming

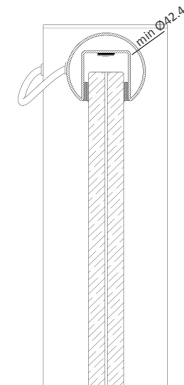
**Example code: Spectraglass-HO-IP40-3.0K-FN-BK-1200x300-DALI**

Description: Spectraglass, high output, IP40, 24DC constant voltage LED with 3000K colour temperature. Fin mounted with black powder coated frame.  
Overall dimensions = 1200x300mm. DALI dimmable.

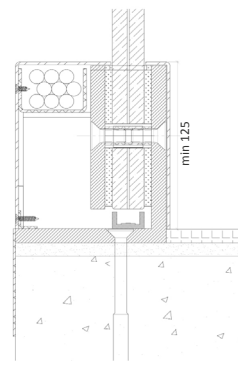


### Mount Type

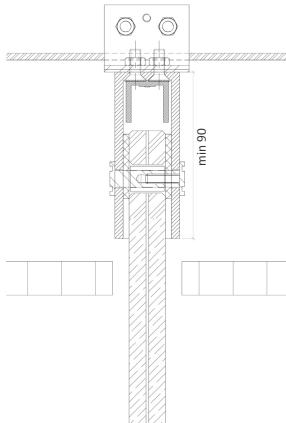
Balustrade (BL)  
(top detail)



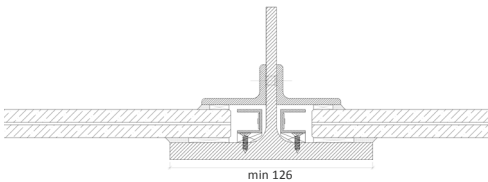
Balustrade (BL)  
(bottom detail)



### Fins (FN)



### Canopy (CN)



The Light Lab  
22 Holywell Row  
London EC2A 4JB  
+44 (0) 207 278 2678  
@thelightlabltd  
www.thelightlab.com

**the light lab**  
bright ideas



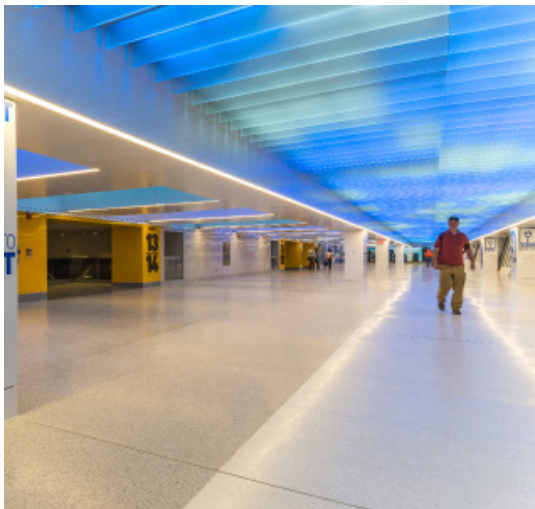
Project Images



Sky Bar, O2



MAC Cosmetics, NYC



Penn Station, NYC



Lexington Avenue, NYC



97 Uxbridge Road



Aurora House, Ealing



Commercial Office, London



Friars Walk, Newport



UAE Pavillion, Milan Expo