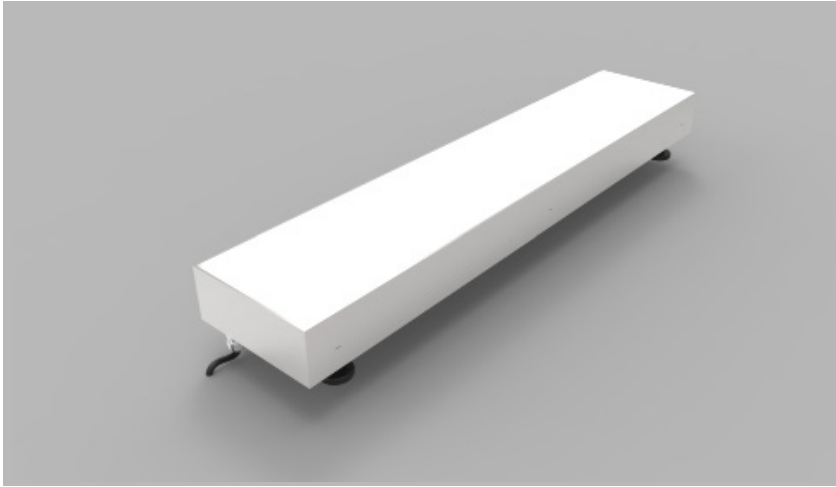


Product Details Glowtile



Specification

Output	SO	HO
Power Consumption	40W/m ²	80W/m ²
Voltage	24VDC	24VDC
IP Rating	IP67	IP67
LED Colour ¹	2.7K/3.0K/4.0K/5.0K, RGBW or WWCW (White Mix 2.7K - 6.5K)	
Dimensions:	Width	1000mm (max)
	Length	1500mm (max)
	Depth	76.2mm
Mount Type	Inground (IN)	
Finish	White (WH) or Custom RAL (RAL)	
Control	0-10V/1-10V/DMX/DALI/SPI	

Notes

1 Other colours available on request.

Order code

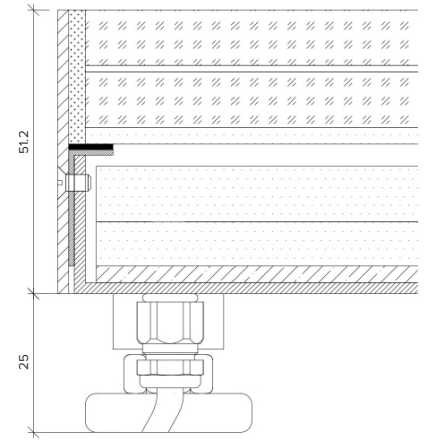
Glowtile- Output-IP Rating-LED Colour-Mount Type-Frame Finish- Length x Width(mm)-Dimming

Example code: Glowtile-SO-IP67-3.0K-IN-WH-1200x300-DALI

Description: Glowtile, standard output, IP67, 24VDC constant voltage LED with 3000K colour temperature. Inground with white powdercoat frame. Overall dimensions = 1200x300mm mm. DALI dimmable.



X Section



The Light Lab
 22 Holywell Row
 London EC2A 4JB
 +44 (0) 207 278 2678
 @thelightlabltd
 www.thelightlab.com

the light lab
 bright ideas