

Product Details Glowpanel Trimless



Specification

Output	SO	HO
Power Consumption	average 56W/m ²	210W/m ²
Voltage	24VDC	24VDC
IP Rating	IP40 or IP65	IP40 or IP65
LED Colour ¹	2.0K/3.0K/4.0K/5.0K, RGBW or WWCW (White Mix 2.7K - 6.5K)	
Dimensions:	Width 1500mm (max) Length 3000mm (max) Depth ² 35mm (SO) or 50mm (HO)	
Mount Type ³	Surface (SM), Recessed Wall (RE), Wall (WA) or Ceiling (CE)	
Finish	White (WH) or Custom RAL (RAL)	
Control	0-10V/1-10V/DMX/DALI/SPI	

Notes

- 1 Other colours available on request.
- 2 Depth excludes grommet, glands & cables.
- 3 Special mechanical consideration is required for ceiling applications.

Order code

Glowpanel Trimless- Output-IP Rating-LED Colour-Mount Type-Frame Finish-
Length x Width(mm)- Dimming

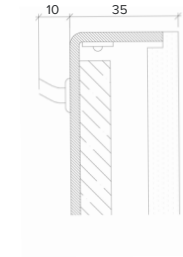
Example code: Glowpanel Trimless-SO-IP40-3.0K-SM-BR-1200x300-DALI

Description: Glowpanel Trimless, standard output, IP40, 24VDC constant voltage
LED with 3000K colour temperature. Surface mounted with powder coated chassis.
Overall dimensions = 1200x300mm mm. DALI dimmable.

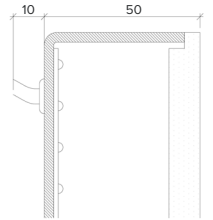


X Section

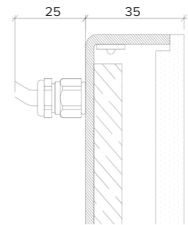
SO - IP40



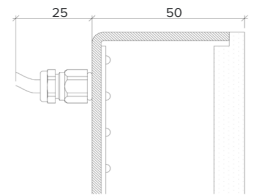
HO - IP40



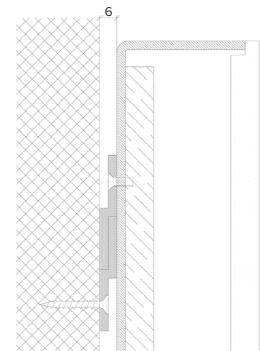
SO-IP65



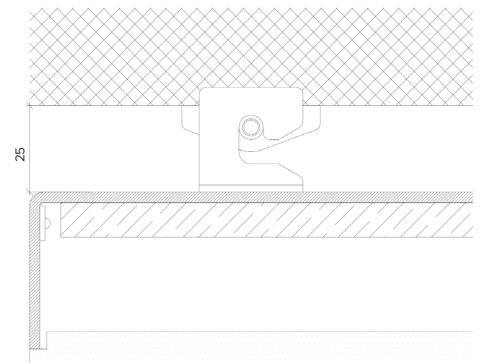
HO-IP65



Wall Fixing



Ceiling Fixing



The Light Lab
22 Holywell Row
London EC2A 4JB
+44 (0) 207 278 2678
@thelightlabltd
www.thelightlab.com

the light lab
bright ideas