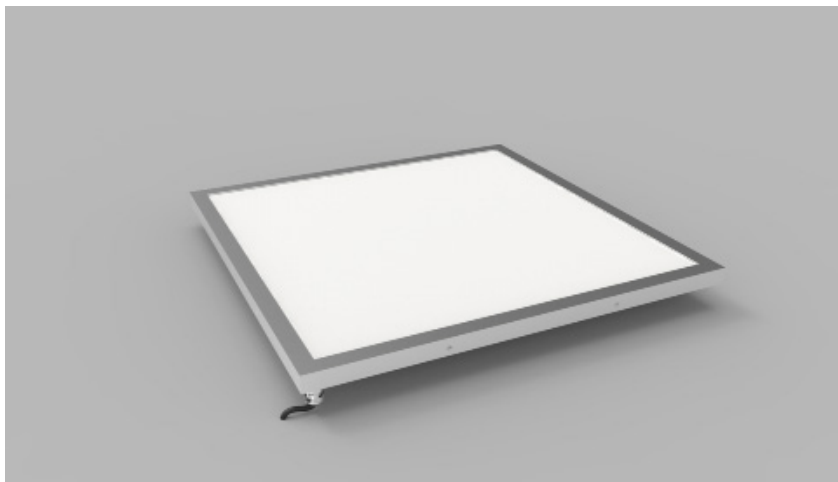


# Product Details Glowpanel



## Specification

Output	SO	HO
Power Consumption	average 56W/m <sup>2</sup>	average 72W/m <sup>2</sup>
Voltage	24VDC	24VDC
IP Rating	IP40 or IP65	IP40 or IP65
LED Colour <sup>1</sup>	2.0K/3.0K/4.0K/5.0K, RGBW or WWCW (White Mix 2.7K - 6.5K)	
Dimensions:	1500mm (max)	
Width	3000mm (max)	
Length	20mm	
Depth <sup>2</sup>		
Mount Type <sup>3</sup>	Surface (SM), Recessed Wall (RE), Wall (WA) or Ceiling (CE)	
Finish	Brushed S/Steel or RAL Finish	
Control	0-10V/1-10V/DMX/DALI/SPI	

### Notes

- 1 Other colours available on request.
- 2 Depth excludes grommet, glands & cables.
- 3 Special mechanical consideration is required for ceiling applications.

### Order code

Glowpanel - Output-IP Rating-LED Colour-Mount Type-Frame Finish-  
Length x Width(mm)- Dimming

**Example code: Glowpanel-SO-IP40-3.0K-SM-BR-1200x300-DALI**

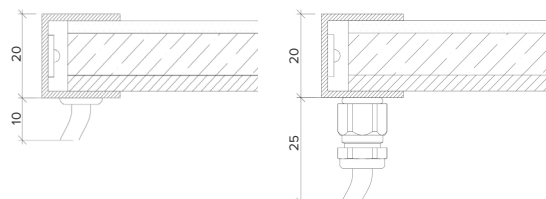
Description: Glowpanel, standard output, IP40, 24VDC constant voltage LED with 3000K colour temperature. Surface mounted with brushed stainless steel frame. Overall dimensions = 1200x300mm mm. DALI dimmable.



## X Section

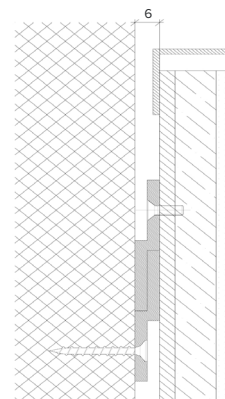
IP40

IP65

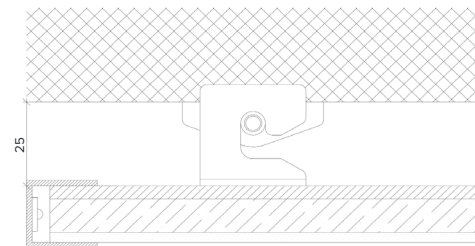


## Mount Type

Wall (WA)



Ceiling (CE)



The Light Lab  
22 Holywell Row  
London EC2A 4JB  
+44 (0) 207 278 2678  
@thelightlabltd  
www.thelightlab.com

**the light lab**  
bright ideas