



Glowline

spec sheet

Key features

Tailored: Fully tailorable in curved/straight and angular sections with even light diffusion throughout.

LED: Wide range of light outputs, colour temperatures and colours.

Control: Switched, 0-10/1-10v, DALI, DMX and SPI (pixel) dimming protocols.

Material: Acrylic diffuser with anodised and powder coated chasis.

Aesthetic: Flush mounted or proud diffuser with seamless joints and no visible mechanical fixing.

Longevity: 50,000+ LED lifetime expectancy.

Sustainability: Maintainable LED modules.

Application: Interior and exterior in wall, ceiling and suspended applications.

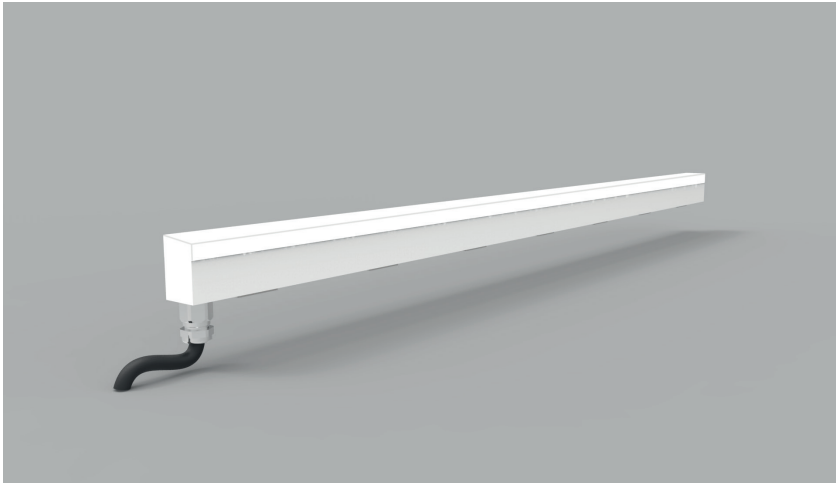
Glowline by The Light Lab



GL12
GL16
GL20
GL25
GL50

the light lab
bright ideas

Product Details GL12



Specification

Output	SO
Power Consumption	9.6W/m
Voltage	24VDC
IP Rating	IP40 or IP65
LED Colour ¹	2.7K/3.0K/4.0K/5.0K, RGBW or WWCW (White Mix 2.7K - 6.5K)
Dimensions:	
Width	12.7mm
Length	115mm to 2965mm in 50mm increments
Depth ²	19.7mm
Mount Type ³	Keyhole (KH), Magnet (MG) & Plaster-in (PL)
Finish	Flush (F) or Proud (P)
Control	0-10V/1-10V/DMX/DALI/SPI

Notes

- 1 Other colours available on request.
- 2 Depth excludes grommet, glands & cables.
- 3 Other mount types available on request.
- 4 For curved and shaped configurations, please contact the office to discuss your requirements.

Order code

GL12-Output-IP Rating-LED Colour-Mount Type-Finish-Length-Dimming

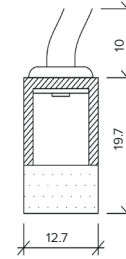
Example code: GL12-SO-IP40-3.0K-SM-F-2065-DALI

Description: Glowline 12, standard output, IP40, 24VDC constant voltage LED with 3000K colour temperature. Surface mounted with flush diffuser. Length=2065mm DALI dimmable.

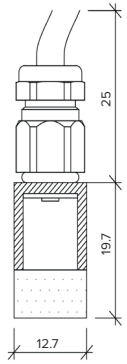


Chassis

IP44



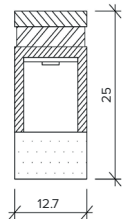
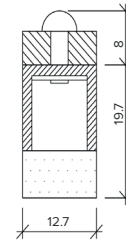
IP65



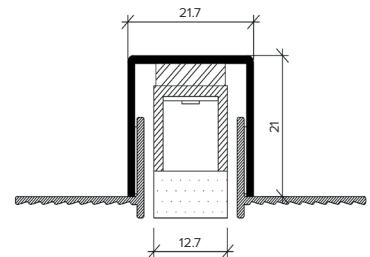
Mount Type

Keyhole (KH)

Magnet (MG)

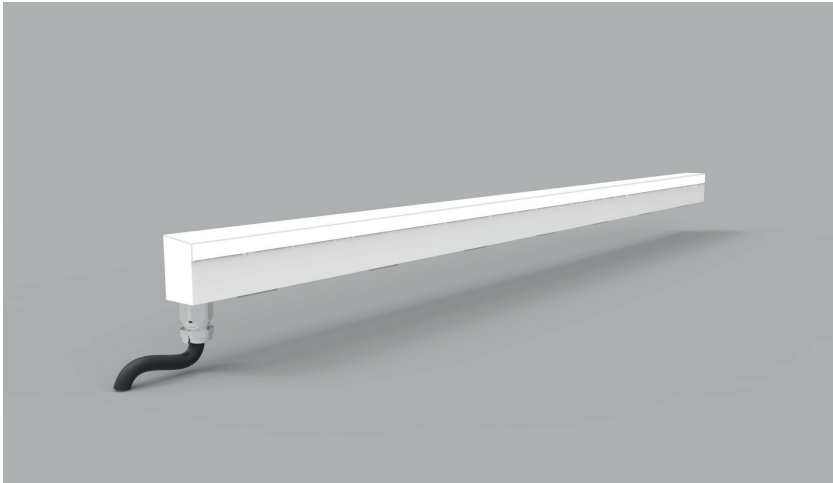


Plaster-in (PL)



the light lab
bright ideas

Product Details GL16



Specification

Output	SO	HO	SHO
Power Consumption	9.6W/m	14.4W/m	18W/m
Voltage	24VDC	24VDC	24VDC
IP Rating	IP40 or IP65	IP40 or IP65	IP40 or IP65
LED Colour ¹	2.7K/3.0K/4.0K/5.0K, RGBW or WWCW (White Mix 2.7K - 6.5K)		
Dimensions: Width	16mm		
Length	115mm to 2965mm in 50mm increments		
Depth ²	22.9mm		
Mount Type ³	Keyhole (KH), Magnet (MG) & Plaster-in (PL)		
Finish	Flush (F) or Proud (P)		
Control	0-10V/1-10V/DMX/DALI/SPI		

Notes

- 1 Other colours available on request.
- 2 Depth excludes grommet, glands & cables
- 3 Other mount types available on request.
- 4 For curved and shaped configurations, please contact the office to discuss your requirements.

Order code

GL16-Output-IP Rating-LED Colour - Mount Type-Finish-Length-Dimming

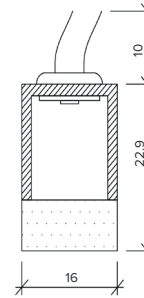
Example code: GL16-SO-IP40-3.0K-SM-F-2065-DALI

Description: Glowline 16, standard output, IP40, 24VDC constant voltage LED with 3000K colour temperature. Surface mounted with flush diffuser. Length=2065mm DALI dimmable.

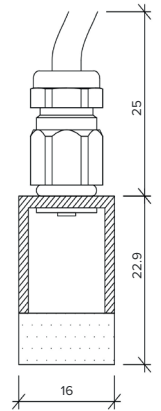


Chasis

IP44



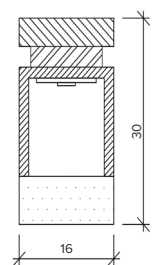
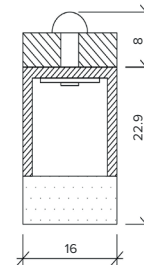
IP65



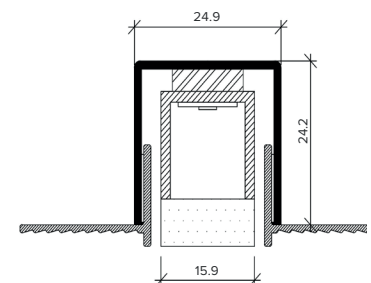
Mount Type

Keyhole (KH)

Magnet (MG)

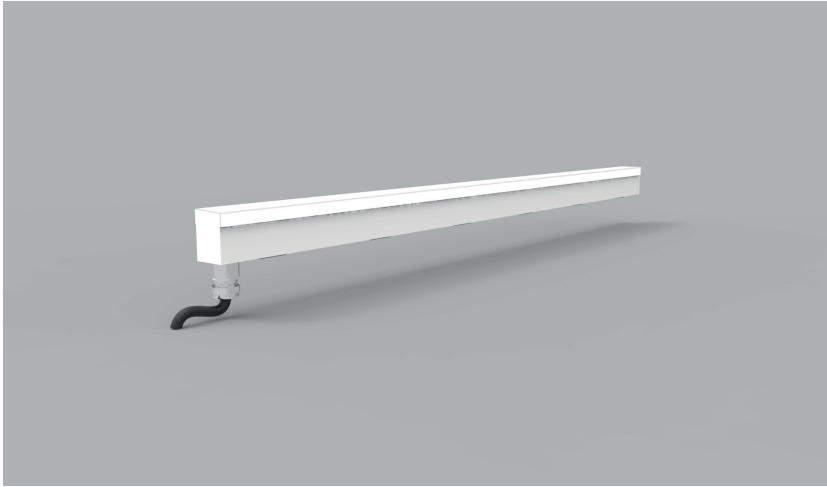


Plaster-in (PL)



the light lab
bright ideas

Product Details GL20



Specification

Output	SO	HO	SHO
Power Consumption	9.6W/m	14.4W/m	18W/m
Voltage	24VDC	24VDC	24VDC
IP Rating	IP40 or IP65	IP40 or IP65	IP40 or IP65
LED Colour ¹	2.7K/3.0K/4.0K/5.0K, RGBW or WWCW (White Mix 2.7K - 6.5K)		
Dimensions:	Width	20mm	
	Length	115mm to 2965mm in 50mm increments	
	Depth ²	27mm	
Mount Type ³	Keyhole (KH), Magnet (MG) & Plaster-in (PL)		
Finish	Flush (F) or Proud (P)		
Control	0-10V/1-10V/DMX/DALI/SPI		

Notes

- 1 Other colours available on request.
- 2 Depth excludes grommet, glands & cables.
- 3 Other mount types available on request.
- 4 For curved and shaped configurations, please contact the office to discuss your requirements.

Order code

GL20-Output-IP Rating-LED Colour - Mount Type-Finish-Length-Dimming

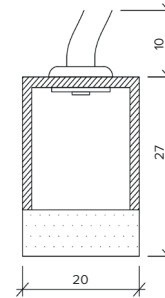
Example code: GL20-SO-IP40-3.0K-SM-F-2065-DALI

Description: Glowline 20, standard output, IP40, 24VDC constant voltage LED with 3000K colour temperature. Surface mounted with flush diffuser. Length=2065mm DALI dimmable.

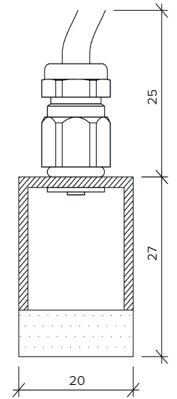


Chasis

IP44

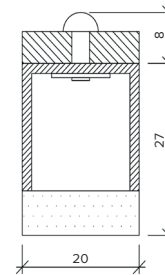


IP65

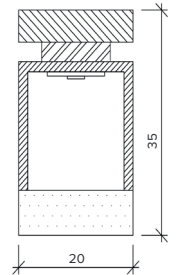


Mount Type

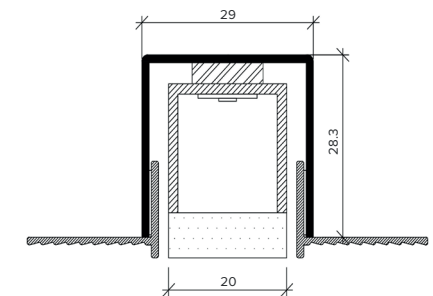
Keyhole (KH)



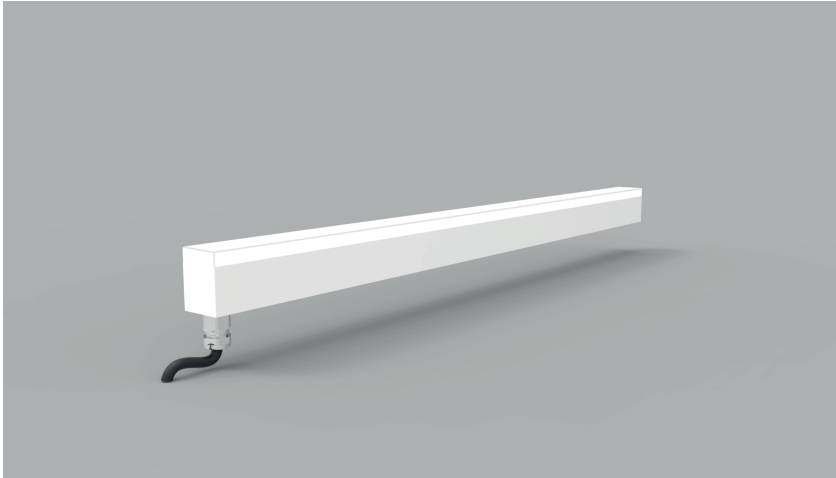
Magnet (MG)



Plaster-in (PL)



Product Details GL25



Specification

Output	SO	HO	SHO
Power Consumption	9.6W/m	14.4W/m	18W/m
Voltage	24VDC	24VDC	24VDC
IP Rating	IP40 or IP65	IP40 or IP65	IP40 or IP65
LED Colour ¹	2.7K/3.0K/4.0K/5.0K, RGBW or WWCW (White Mix 2.7K - 6.5K)		
Dimensions:	Width	25mm	
	Length	115mm to 2965mm in 50mm increments	
	Depth ²	32mm	
Mount Type ³	Keyhole (KH), Magnet (MG) & Plaster-in (PL)		
Finish	Flush (F) or Proud (P)		
Control	0-10V/1-10V/DMX/DALI/SPI		

Notes

- 1 Other colours available on request.
- 2 Depth excludes grommet, glands & cables.
- 3 Other mount types available on request.
- 4 For curved and shaped configurations, please contact the office to discuss your requirements.

Order code

GL25-Output-IP Rating-LED Colour-Mount Type-Finish-Length-Dimming

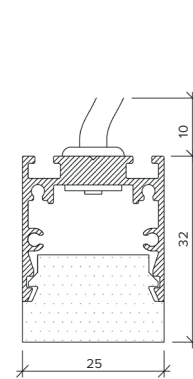
Example code: GL25-SO-IP40-3.0K-SM-F-2065-DALI

Description: Glowline 25, standard output, IP40, 24VDC constant voltage LED with 3000K colour temperature. Surface mounted with flush diffuser. Length=2065mm DALI dimmable.

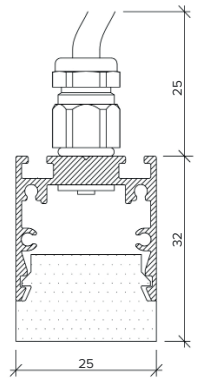


Chasis

IP44

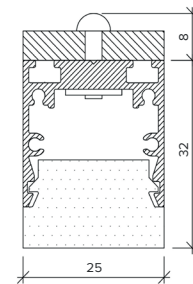


IP65

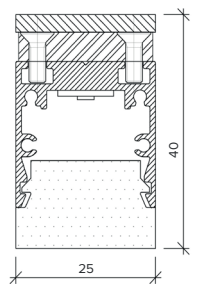


Mount Type

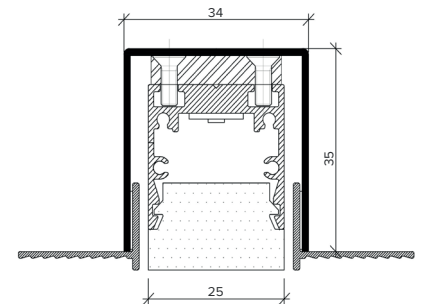
Keyhole (KH)



Magnet (MG)



Plaster-in (PL)



the light lab
bright ideas

Product Details GL50



Specification

Output	SO	HO	SHO
Power Consumption	9.6W/m	14.4W/m	18W/m
Voltage	24VDC	24VDC	24VDC
IP Rating	IP40 or IP65	IP40 or IP65	IP40 or IP65
LED Colour ¹	2.7K/3.0K/4.0K/5.0K, RGBW or WWCW (White Mix 2.7K - 6.5K)		
Dimensions:	50mm		
Width	115mm to 2965mm in 50mm increments		
Length	55.7mm		
Depth ²			
Mount Type ³	Keyhole (KH), Magnet (MG) & Plaster-in (PL)		
Finish	Flush (F) or Proud (P)		
Control	0-10V/1-10V/DMX/DALI/SPI		

Notes

- 1 Other colours available on request.
- 2 Depth excludes grommet, glands & cables.
- 3 Other mount types available on request.
- 4 For curved and shaped configurations, please contact the office to discuss your requirements.

Order code

GL50-Output-IP Rating-LED Colour-Mount Type-Finish-Length-Dimming

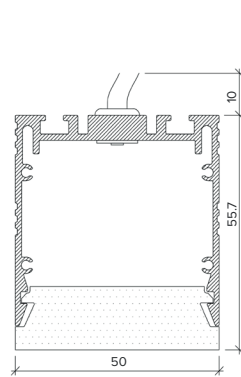
Example code: GL50-SO-IP40-3.0K-SM-F-2065-DALI

Description: Glowline 50, standard output, IP40, 24VDC constant voltage LED with 3000K colour temperature. Surface mounted with flush diffuser. Length=2065mm DALI dimmable.

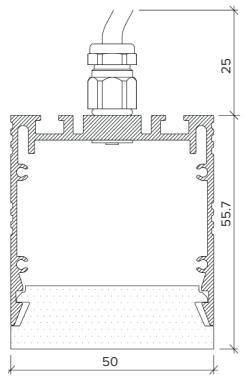


Chassis

IP44

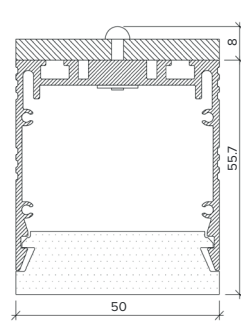


IP65

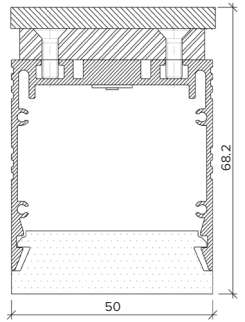


Mount Type

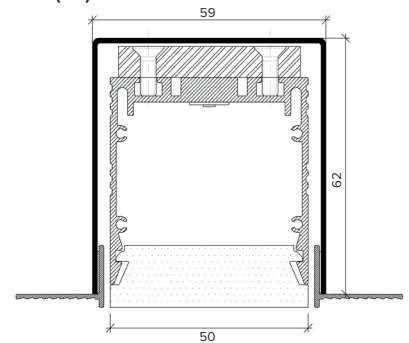
Keyhole (KH)



Magnet (MG)



Plaster-in (PL)



the light lab
bright ideas

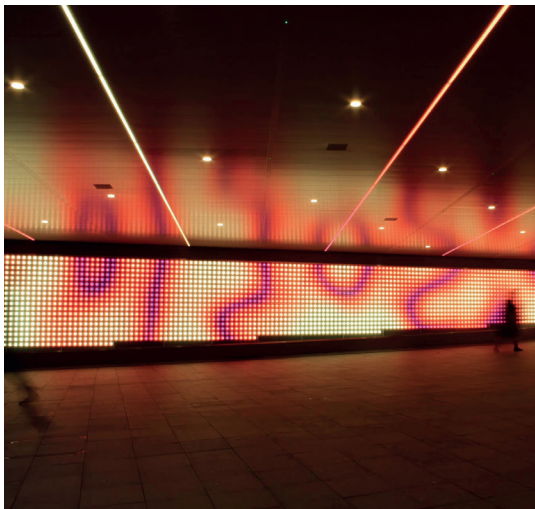
Project Images



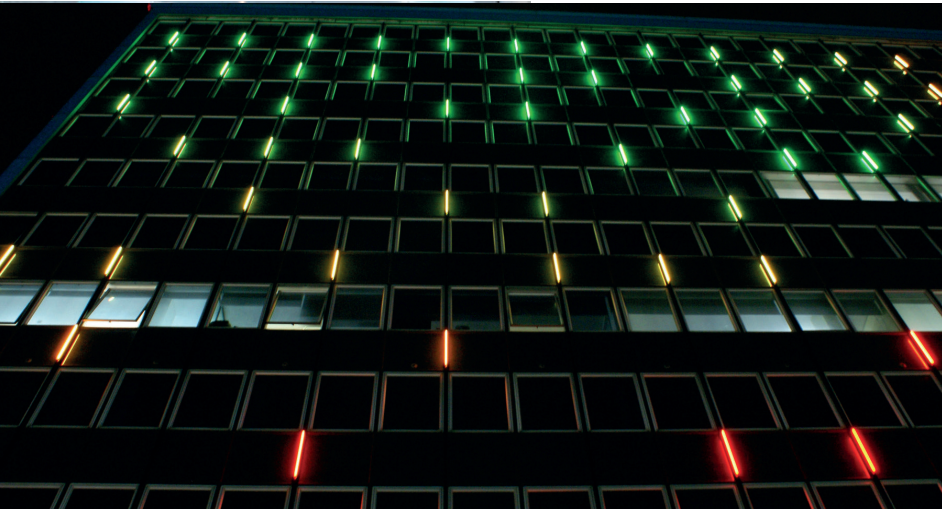
Broadgate Circle



The Engine Room



Bobby Moore Pedestrian Underpass, Wembley



Ashford International



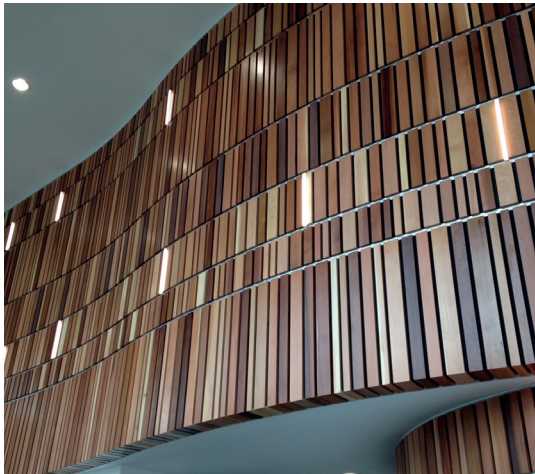
Liberty Specialist Markets



Commercial Office, London



Lake View, Manchester



Admiral, Newport

Glowline by The Light Lab

