



LED Linear Lighting

spec sheet

Main Features

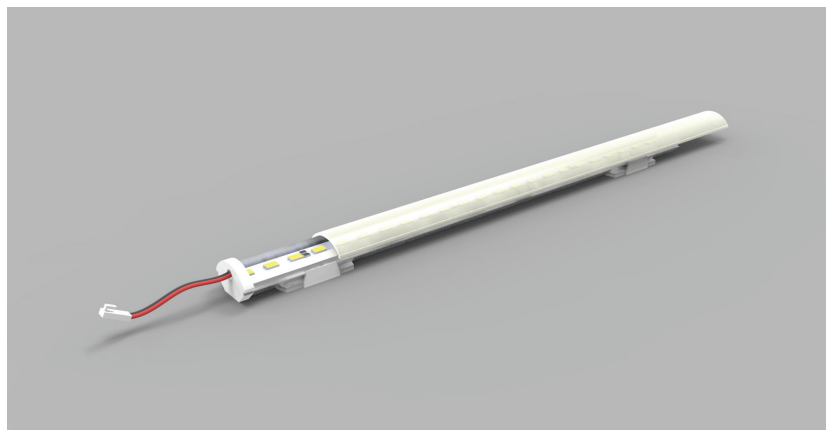
- Linear LEDs for every design application
- Various outputs from 750 lm/M to 6000 lm/M
- Bracket/clips design to suit continuous line of light
- Advanced optic design to maximise wall wash effect
- Low profile lights for precise joinery application
- 50 000 unit life expectancy
- 2 year warranty

Linear LED Lighting by The Light Lab



LinLED-PROFILE
LinLED-PROFILE-MINI
LinLED-PROFILE-SHELF
LinLED-PROFILE-IP65
LinLED-COVE
LinLED-HO-OPTIC
LinLED-SHO-OPTIC-BAFFLE
LinLED-HO-OPTIC-MINI
LinLED-HO-OPTIC-TRI-CHANNEL
LinLED-HO-OPTIC-RGBW
LinLED-SHO-OPTIC-BAFFLE-FLOOR

Product Details: LinLED-PROFILE



Specification

	SO	HO
Length	min 55mm up to 1955mm in 50mm increments	min 55mm up to 1955mm in 50mm increments
Colour	3.0K/4.0K/5.0K	2.7K/3.0K/3.5K/4.0K/5.0K
Input Voltage	24Vdc	24Vdc
Power Consumption	9.6 W/m	14 W/m
Luminaire Efficiency	80 lm/W	110 lm/W
IP Rating	IP44	IP44
Diffuser	Clear/Frost/Opal	Clear/Frost/Opal
Clip	Fixed 0°/30°/45°	Fixed 0°/30°/45°

Order code

LinLED PROFILE-LENGTH-OUTPUT-COLOUR-IP-DIFFUSER-CLIP
e.g. LED PROFILE-XX-SO-3.0K-IP44-CLEAR-0

LENGTH - OUTPUT - COLOUR - IP - DIFFUSER - CLIP
XXmm SO 2.7K IP44 CLEAR 0
HO 3.0K FROST 30
3.5K OPAL 45
4.0K
5.0K

Drivers

non-dimmable power supplies:

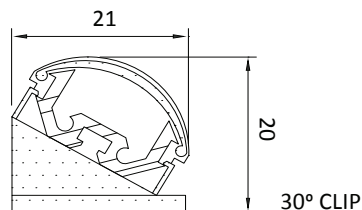
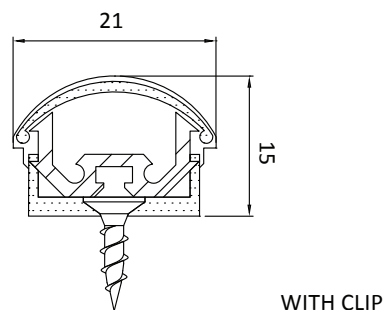
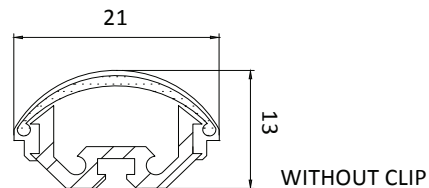
1-10V /DALI/DMX dimmable power supplies to be ordered seperately

Please call our sales team who will make sure specification suits application

Linear LED Lighting by The Light Lab



X-Sections

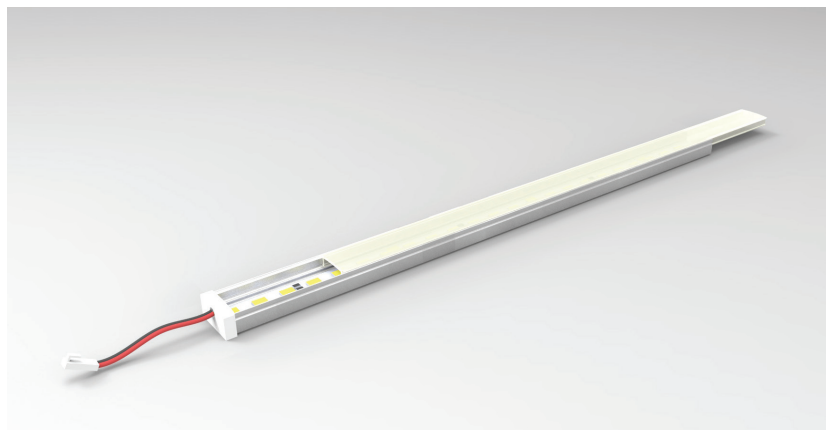


Project Example



The Light Lab
22 Holywell Row
London EC2A 4JB
United Kingdom
+44 (0) 207 278 2678
@thelightlabtd
www.thelightlab.com

Product Details: LinLED-PROFILE-MINI



Specification

	SO
Length	Min 55mm up to 1955mm in 50mm increments
Colour	3.0K/4.0K/5.0K
Input Voltage	24Vdc
Power Consumption	9.6 W/m
Luminaire Efficiency	80 lm/W
IP Rating	IP44
Diffuser	Clear/Frost/Opal
Fixing	VHB Tape or Dual Lock

Order code

LinLED PROFILE MINI-LENGTH-OUTPUT-COLOUR-IP-DIFFUSER-CLIP
 e.g. LED PROFILE MINI-XXmm-SO-3.0K-IP44-CLEAR-VHB

LENGTH	-	OUTPUT	-	COLOUR	-	IP	-	DIFFUSER	-	FIXING
XXmm		SO		3.0K		IP44		CLEAR		VHB
				4.0K				FROST		DL
				5.0K				OPAL		

Drivers

non-dimmable power supplies:

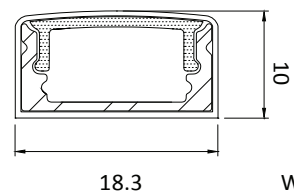
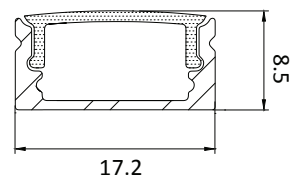
1-10V /DALI/DMX dimmable power supplies to be ordered seperately

Please call our sales team who will make sure specification suits application

Linear LED Lighting by The Light Lab



X-Sections



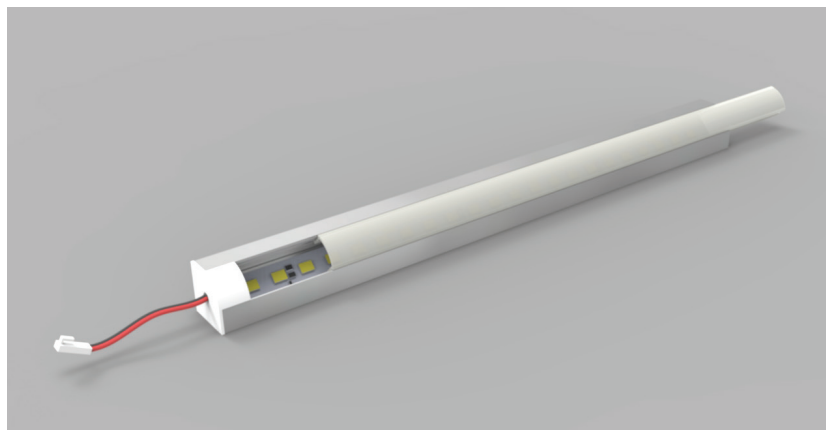
WITH ENDCAP

Project Example



The Light Lab
 22 Holywell Row
 London EC2A 4JB
 United Kingdom
 +44 (0) 207 278 2678
 @thelightlabtd
 www.thelightlab.com

Product Details: LinLED-PROFILE-SHELF



Specification

	SO	HO
Length	min 55mm up to 1955mm in 50mm increments	min 55mm up to 1955mm in 50mm increments
Colour	3.0K/4.0K/5.0K	2.7K/3.0K/3.5K/4.0K/5.0K
Input Voltage	24Vdc	24Vdc
Power Consumption	9.6 W/m	14 W/m
Luminaire Efficiency	80 lm/W	110 lm/W
IP Rating	IP44	IP44
Diffuser	Clear/Frost/Opal	Clear/Frost/Opal
Clip	Clip or VHB Dual Lock	Clip or VHB Dual Lock

Order code

LinLED PROFILE SHELF-LENGTH-OUTPUT-COLOUR-IP-DIFFUSER-CLIP
e.g. LED PROFILE-XXmm-SO-3.0K-IP44-CLEAR-CLIP

LENGTH - OUTPUT - COLOUR - IP - DIFFUSER - CLIP
XXmm SO 2.7K IP44 CLEAR CLIP
HO 3.0K FROST VHB
3.5K OPAL
4.0K
5.0K

Drivers

non-dimmable power supplies:

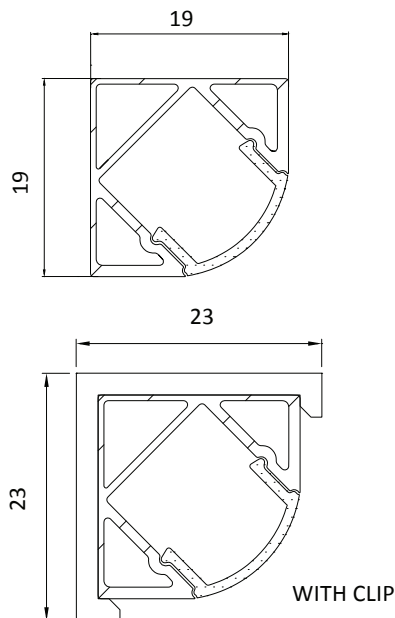
1-10V /DALI/DMX dimmable power supplies to be ordered separately

Please call our sales team who will make sure specification suits application

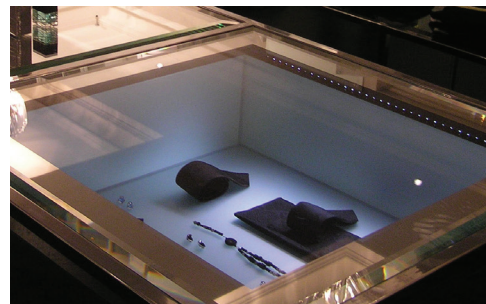
Linear LED Lighting by The Light Lab



X-Sections



Project Example



The Light Lab
22 Holywell Row
London EC2A 4JB
United Kingdom
+44 (0) 207 278 2678
@thelightlabtd
www.thelightlab.com

Product Details: LinLED-PROFILE-IP65



Specification

	HO	RGB
Length	Min 55mm up to 1955mm in 50mm increments	Min 55mm up to 1955mm in 50mm increments
Colour	2.7K/3.0K/3.5K/4.0K/5.0K	RGB/RGBCW/RGBWW
Input Voltage	24Vdc	12Vdc
Power Consumption	14W/m	14W/m
Luminaire Efficiency	110 lm/W	N/A
IP Rating	IP44	IP44
Diffuser	Clear	Clear
Clip	Fixed	Fixed
Cable Exit	Rear or End	Rear or End

Order code

LinLED PROFILE IP65-LENGTH-OUTPUT-COLOUR-IP-DIFFUSER-CLIP-CABLE EXIT
 e.g. LED PROFILE IP65-XXmm-HO-3.0K-14W/m-110lm/W-IP44-CLEAR-FIXED-REAR

LENGTH - OUTPUT - COLOUR - IP - DIFFUSER - CLIP - CABLE EXIT
XXmm HO 2.7K IP44 CLEAR FIXED REAR
RGB 3.0K ADJ END
3.5K
4.0K
5.0K
RGB
RGBCW
RGBWW

Drivers

non-dimmable power supplies:

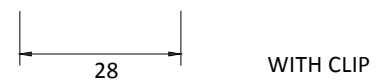
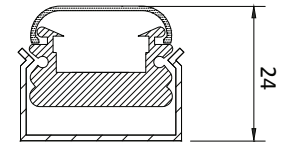
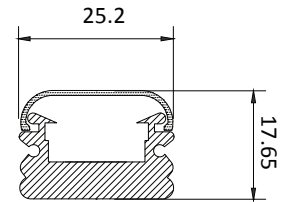
1-10V /DALI/DMX dimmable power supplies to be ordered seperately

Please call our sales team who will make sure specification suits application

Linear LED Lighting by The Light Lab



X-Sections



Project Example



The Light Lab
 22 Holywell Row
 London EC2A 4JB
 United Kingdom
 +44 (0) 207 278 2678
 @thelightlabtd
 www.thelightlab.com

Product Details: LinLED-COVE



Specification

	HO	SHO	WMIX
Length	90mm min + 83mm increments	90mm + 83mm increments	180mm + 167mm increments
Colour	2.3K/2.7K/3.0K/ 3.5K/3.5K/4.0K/ 5.0K	2.3K/2.7K/3.0K/ 3.5K/3.5K/4.0K/ 5.0K	2.7K/5.3K White Mix
Input Voltage	24Vdc	24Vdc	24Vdc
Power Consumption	19.5 W/m	37 W/m	19.5 W/m
Luminaire Efficiency	127 lm/W	125 lm/W	125 lm/W
IP Rating	IP44	IP44	IP44
Diffuser	Frosted	Frosted	Frosted
Clip	Round plastic	Round Plastic	Round plastic

Order code

LED COVE-LENGTH-OUTPUT-COLOUR-IP-DIFFUSER-CLIP
e.g. LED COVE-XXmm-SHO-2.3K-IP44-FROSTED-RP

LENGTH - OUTPUT - COLOUR - IP - DIFFUSER - CLIP

XXmm	SHO	2.3K	IP44	Frosted	RP
	WMIX	2.7K			
		3.0K			
		3.5K			
		4.0K			
		5.0K			
		5.3K			

Drivers

non-dimmable power supplies:

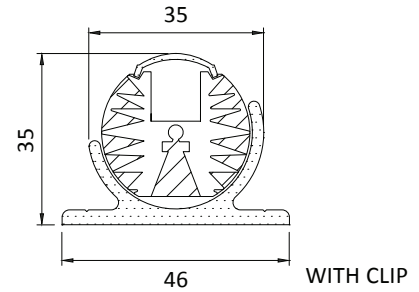
1-10V /DALI/DMX dimmable power supplies to be ordered separately

Please call our sales team who will make sure specification suits application

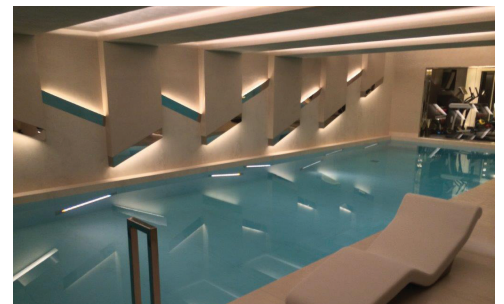
Linear LED Lighting by The Light Lab



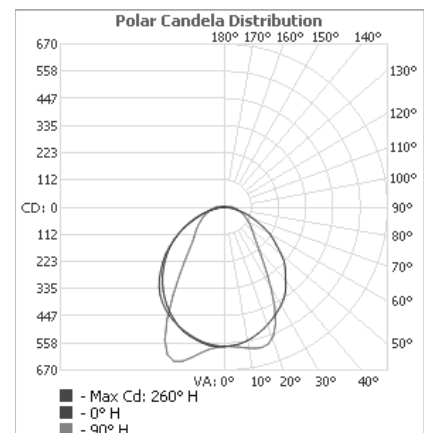
X-Sections



Project Example



Photometric Info



The Light Lab
22 Holywell Row
London EC2A 4JB
United Kingdom
+44 (0) 207 278 2678
@thelightlabtd
www.thelightlab.com

Product Details: LinLED-SHO-OPTIC-BAFFLE



Specification

	350ma	500ma
Length	200mm + 97mm increments	200mm + 97mm increments
Colour	2.25K/2.7K/3.0K/3.5K/4.0K/4.5K/5.3K/6.0K	2.25K/2.7K/3.0K/3.5K/4.0K/4.5K/5.3K/6.0K
Input Current	350ma	500ma
Power Consumption	44 W/m	63 W/m
Luminaire Efficiency	108 lm/W	105 lm/W
IP Rating	IP20	IP20
Optic	15°/20°/45°/ 34° x13°	15°/20°/45°/ 34° x13°
Clip	Rear or End Bracket	Rear or End Bracket

Order code

LinLED SHO OPTIC BAFFLE-LENGTH-CURRENT-COLOUR-IP-OPTIC-CLIP
e.g. LED SHO OPTIC BAFFLE-XXmm-300ma-2.25K-IP20-16-REAR

LENGTH - XXmm	CURRENT - 300ma 500ma	COLOUR - 2.25K 2.7K 3.0K 3.5K 4.0K 4.5K 5.3K 6.0K	IP - IP20	OPTIC - 16 23 46 48x19	CLIP - REAR END
------------------	-----------------------------	---	--------------	------------------------------------	-----------------------

Drivers

non-dimmable power supplies:

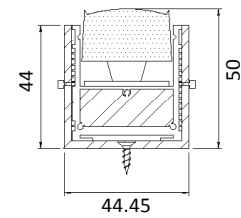
1-10V /DALI/DMX dimmable power supplies to be ordered seperately

Please call our sales team who will make sure specification suits application

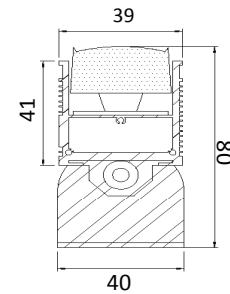
Linear LED Lighting by The Light Lab



X-Sections

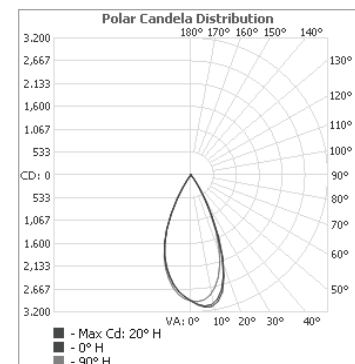
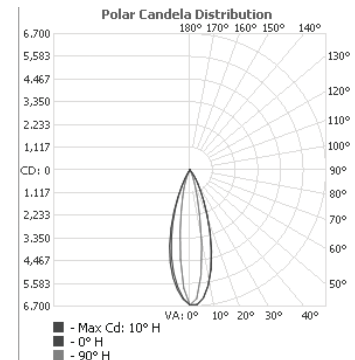


FIXED FITTING



ROTARY FITTING

Photometric Info

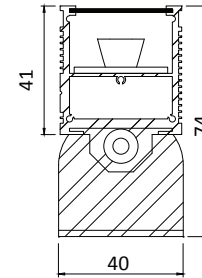
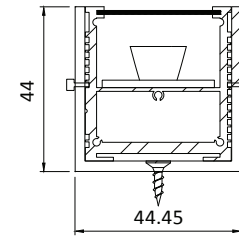


The Light Lab
22 Holywell Row
London EC2A 4JB
United Kingdom
+44 (0) 207 278 2678
@thelightlabtd
www.thelightlab.com

Product Details: LinLED-HO-OPTIC-SINGLE-CHANNEL



X-Sections



Specification

	350ma	700ma
Length	190mm + 167mm increments	200mm + 97mm increments
Colour	2.25K/2.7K/3.0K/3.5K/4.0K/4.5K/5.3K/6.0K	2.25K/2.7K/3.0K/3.5K/4.0K/4.5K/5.3K/6.0K
Input Current	350ma	700ma
Power Consumption	25 W/m	50 W/m
Luminaire Efficiency	108 lm/W	97 lm/W
IP Rating	IP20	IP20
Optic	11°/26°/39°/ 46° x12°	11°/26°/39°/ 46° x12°
Clip	Rear or End Bracket	Rear or End Bracket

Order code

LinLED HO OPTIC SINGLE CHANNEL-LENGTH-CURRENT-COLOUR-IP-OPTIC-CLIP
 e.g. LED HO OPTIC SINGLE CHANNEL-XXmm-350ma-2.25K-IP20-11-REAR

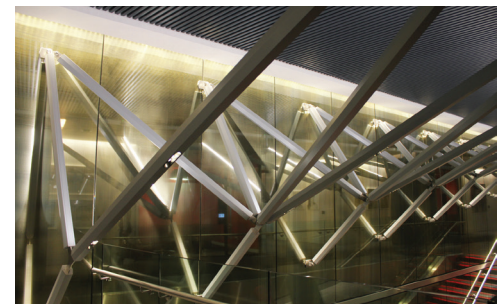
LENGTH - XXmm	CURRENT -	COLOUR -	IP -	OPTIC -	CLIP -
	350ma	2.25K	IP20	11	REAR
	700ma	2.7K		26	END
		3.0K		39	
		3.5K		46x12	
		4.0K			
		4.5K			
		5.3K			
		6.0K			

Drivers

non-dimmable power supplies:

1-10V /DALI/DMX dimmable power supplies to be ordered seperately

Project Example

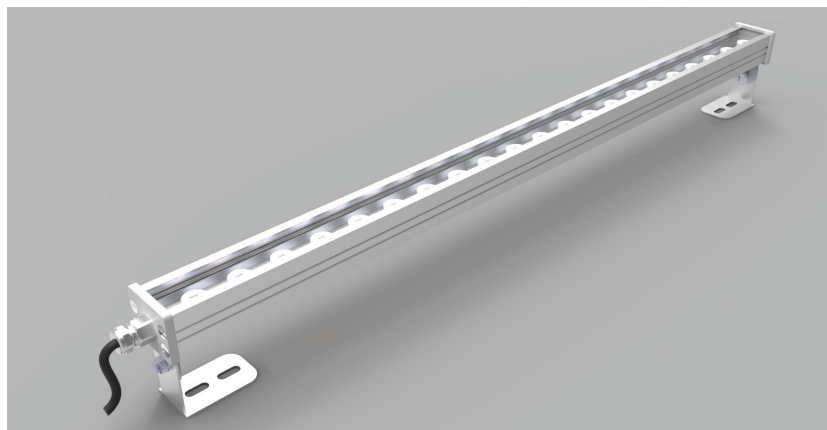


The Light Lab
 22 Holywell Row
 London EC2A 4JB
 United Kingdom
 +44 (0) 207 278 2678
 @thelightlabtd
 www.thelightlab.com

Please call our sales team who will make sure specification suits application

Linear LED Lighting by The Light Lab

Product Details: LinLED-HO-OPTIC-MINI



Specification

Length	120m + 100m increments
Colour	2.7K/3.0K/4.0K/6.0K
Input Voltage	24Vdc
Power Consumption	20 W/m
Luminaire Efficiency	110 lm/W
IP Rating	IP40
Optic	16°/23°/46°/48°x19°
Clip	Clip or Adjustable Bracket
Diffuser	Clear or Frosted

Order code

LinLED HO OPTIC MINI-LENGTH-COLOUR-IP-OPTIC-CLIP-DIFFUSER
 e.g. LED HO OPTIC MINI-XXmm-2.7K-IP40-16-CLIP-CLEAR

LENGTH	COLOUR	IP	OPTIC	CLIP	DIFFUSER
XXmm	2.7K	IP40	16	CLIP	CLEAR
	3.0K		23	AB	FROSTED
	4.0K		46		
	6.0K		48X19		

Drivers

non-dimmable power supplies:

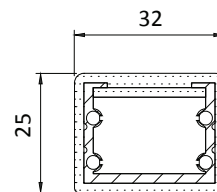
1-10V /DALI/DMX dimmable power supplies to be ordered separately

Please call our sales team who will make sure specification suits application

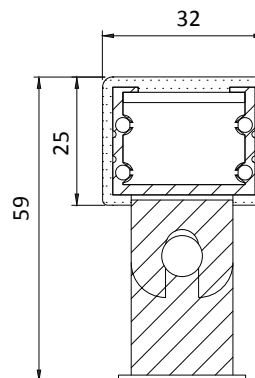
Linear LED Lighting by The Light Lab



X-Sections



WITHOUT BRACKET



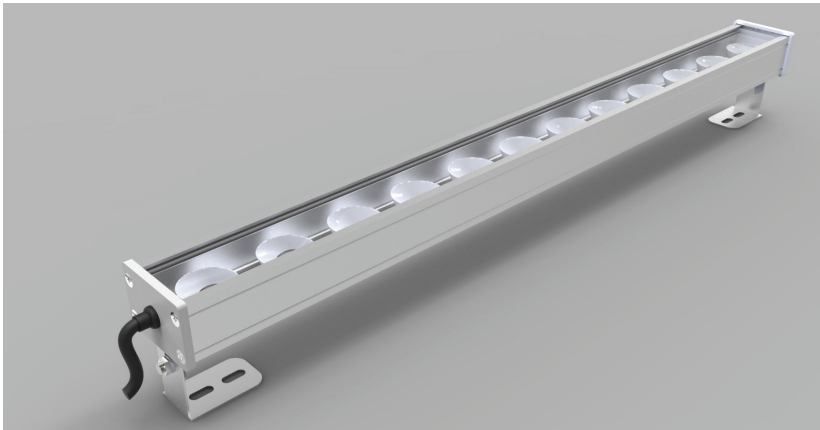
WITH BRACKET

Project Example



The Light Lab
 22 Holywell Row
 London EC2A 4JB
 United Kingdom
 +44 (0) 207 278 2678
 @thelightlabtd
 www.thelightlab.com

Product Details: LinLED-HO-OPTIC-TRI-CHANNEL



Specification

Length	495mm up to 1755mm in 420mm increments
Colour	White Mix or RGB
Input Voltage	24Vdc
Power Consumption	32 W/m
Luminaire Efficiency	83 lm/W for white mix
IP Rating	IP40 or IP65
Optic	7°/14°/26°/40°/9° x48°
Diffuser	Clear or Frosted

Order code

LinLED HO OPTIC TRI CHANNEL-LENGTH-COLOUR-IP-OPTIC-DIFFUSER
 e.g. LED HO OPTIC TRI CHANNEL-XXmm-RGB-IP40-7-CLEAR

LENGTH	COLOUR	IP	OPTIC	DIFFUSER
XXmm	WM	IP40	7	CLEAR
	RGB	IP65	14	FROSTED
			26	
			40	
			9X48	

Drivers

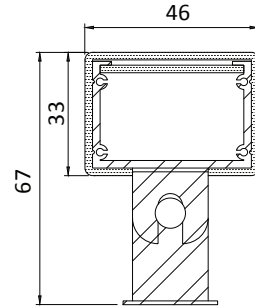
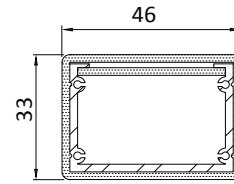
non-dimmable power supplies:
 1-10V /DALI/DMX dimmable power supplies to be ordered seperately

Please call our sales team who will make sure specification suits application

Linear LED Lighting by The Light Lab



X-Sections

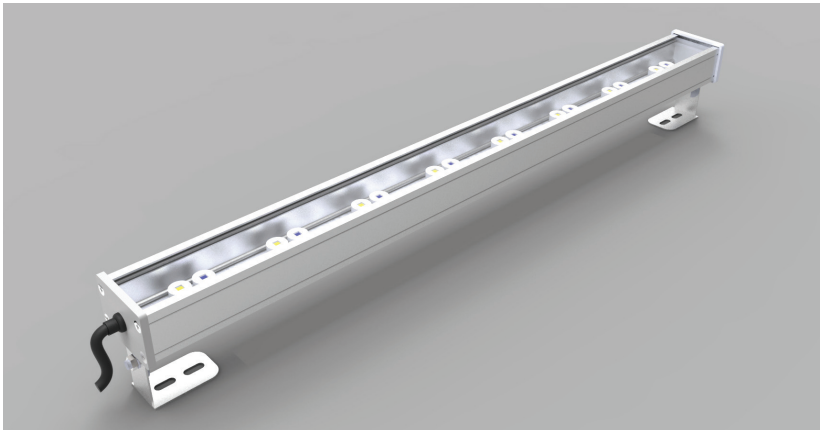


Project Example



The Light Lab
 22 Holywell Row
 London EC2A 4JB
 United Kingdom
 +44 (0) 207 278 2678
 @thelightlabtd
 www.thelightlab.com

Product Details: LinLED-HO-OPTIC-RGBW



Specification

Length	340mm up to 1840mm in 250mm increments
Colour	White Mix or RGB
Input Voltage	24Vdc
Power Consumption	46 W/m
Luminaire Efficiency	85 lm/W for white mix
IP Rating	IP40 or IP65
Optic	20°/28°/40°/45° x18°
Diffuser	Clear or Frosted

Order code

LinLED HO OPTIC RGBW-LENGTH-COLOUR-IP-OPTIC-DIFFUSER
 e.g. LED HO OPTIC RGBW-XXmm-RGB-IP40-20-CLEAR

LENGTH	COLOUR	IP	OPTIC	DIFFUSER
XXmm	WM	IP40	20	CLEAR
	RGB	IP65	28	FROSTED
			40	
			45x18	

Drivers

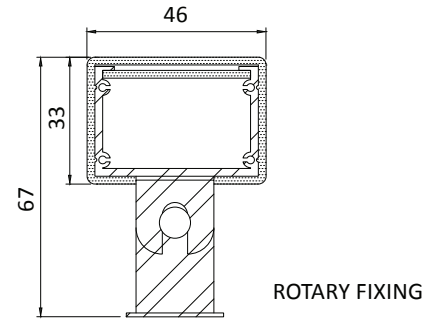
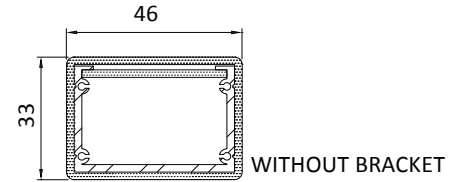
non-dimmable power supplies:
 1-10V /DALI/DMX dimmable power supplies to be ordered seperately

Please call our sales team who will make sure specification suits application

Linear LED Lighting by The Light Lab



X-Sections



Project Example

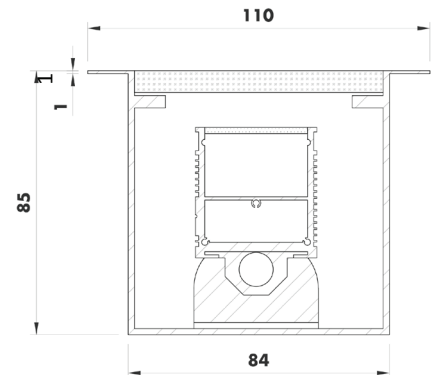
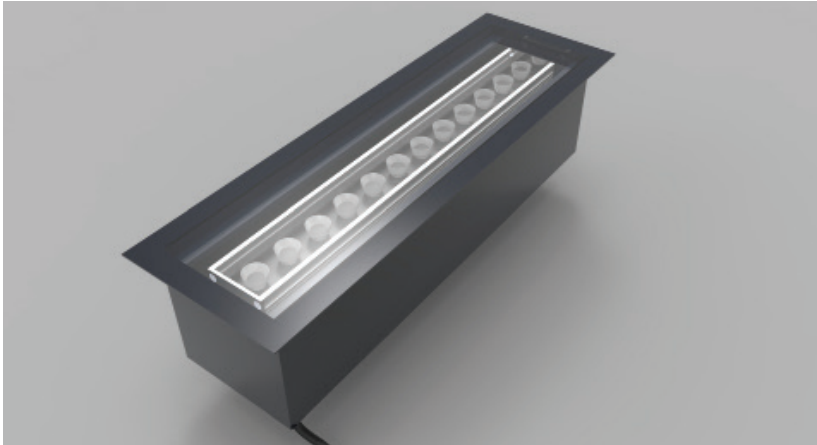


The Light Lab
 22 Holywell Row
 London EC2A 4JB
 United Kingdom
 +44 (0) 207 278 2678
 @thelightlabtd
 www.thelightlab.com

Product Details: LinLED-SHO-OPTIC-BAFFLE-FLOOR



X-Sections



Specification

	350ma	500ma
Length	200mm + 97mm increments	200mm + 97mm increments
Colour	2.25K/2.7K/3.0K/3.5K/4.0K/4.5K/5.3K/6.0K	2.25K/2.7K/3.0K/3.5K/4.0K/4.5K/5.3K/6.0K
Input Current	350ma	500ma
Power Consumption	44 W/m	63 W/m
Luminaire Efficiency	108 lm/W	105 lm/W
IP Rating	IP65	IP65
Optic	15°/20°/45°/ 34°x13°	15°/20°/45°/ 34°x13°
Clip	Rear or End Bracket	Rear or End Bracket

Order code

LinLED SHO OPTIC BAFFLE FLOOR-LENGTH-CURRENT-COLOUR-IP-OPTIC-CLIP
 e.g. LED SHO OPTIC BAFFLE FLOOR-XXmm-300ma-2.25K-IP20-16-REAR

LENGTH	CURRENT	COLOUR	IP	OPTIC	CLIP
XXmm	300ma	2.25K	IP20	16	REAR
	500ma	2.7K		23	END
		3.0K		46	
		3.5K		48x19	
		4.0K			
		4.5K			
		5.3K			
		6.0K			

Drivers

non-dimmable power supplies:

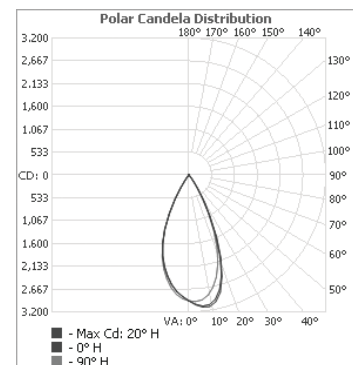
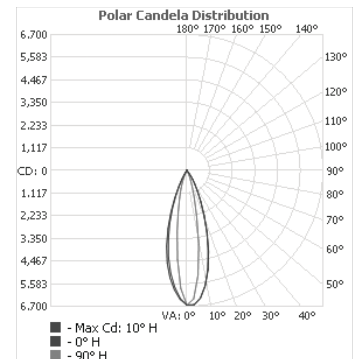
1-10V /DALI/DMX dimmable power supplies to be ordered seperately

Please call our sales team who will make sure specification suits application

Linear LED Lighting by The Light Lab



Photometric Info



The Light Lab
 22 Holywell Row
 London EC2A 4JB
 United Kingdom
 +44 (0) 207 278 2678
 @thelightlabtd
 www.thelightlab.com

Project Images



30 Cannon Street



Del Aziz, Bermondsey



AON, London



Office interior, London



Andrew Martin, London



Kings Cross Underground Station



The Dorchester Ballroom